

Instructions of Setting Integration Tool

It is a collection of thermal printer's setting functions, including setting serial port, Ethernet port, language and program update ect. It's powerful and easy to use.

I. Connect the Printer

Double-click the tool "PrinterTool.exe", and then it'll show as below:



As shown above, there are three ways to connect to the printer.

1. Connect the printer via USB

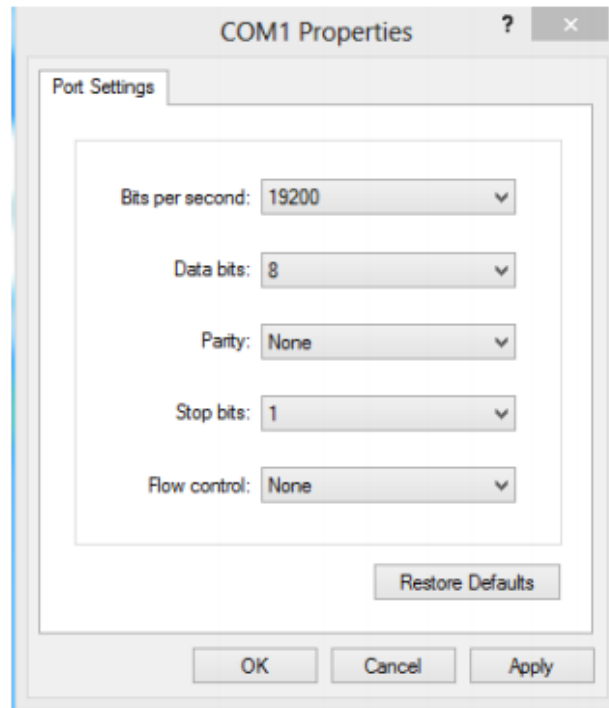
Please click USB option if the printer is connected by USB port. Then you can proceed to "set printer" or "download". (You can click USB option if the printer is connected by USB port. Or the option is gray and can't be chosen.)

2. Connect the printer via port

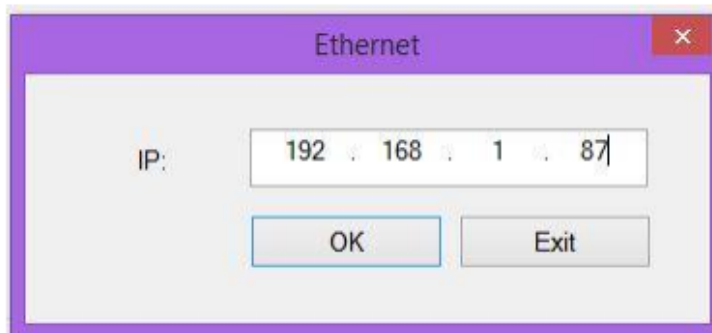


Connect the printer after “Config Port” via serial port, Ethernet port or parallel port, then proceed to “set printer” or “download”.

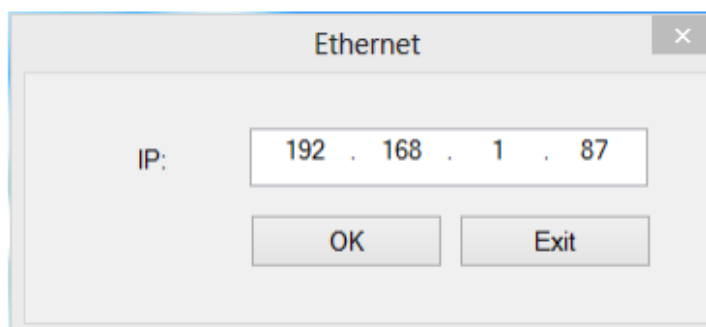
a. Setup port if choose serial port.



b. Setup IP if choose Ethernet port, then connect the printer.



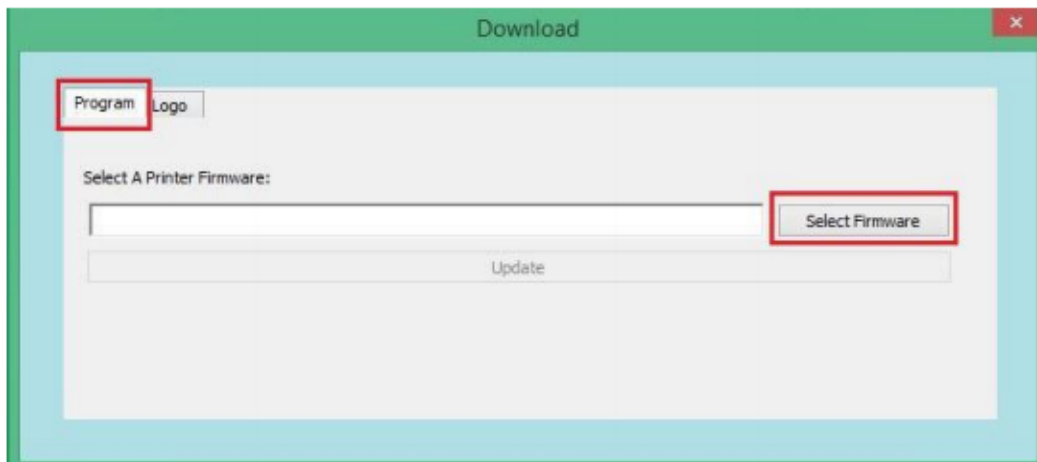
c. Choose parallel



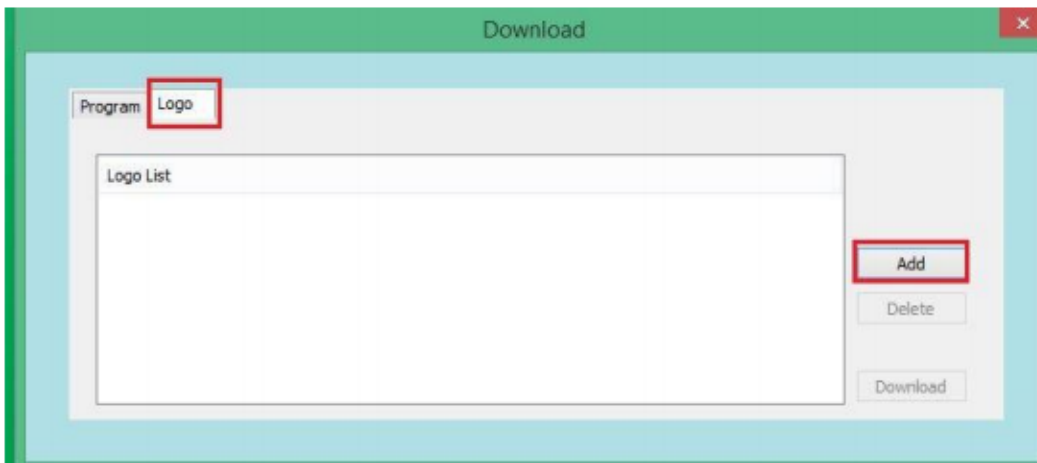
3. Connect printer via common driver (You need to choose and setup corresponding Port of the driver), then proceed to “set printer” or “download”.

II. “Download” function in the main interface.

Click “download”, then it’ll show as below



1. Update program. Click “open files”, select path of corresponding firmware, click “update”, and then update program.
2. It’s available to add a picture. Select “logo”, clicks “add”, chooses corresponding path, then add a logo to the printer.



Note: In this tool, the logo only supports BMP format images (black and white bitmap, or 32-bit panchromatic bitmap) and other image format does not support.

Supported by the bitmap size has certain requirements, the specific requirements are as follows:

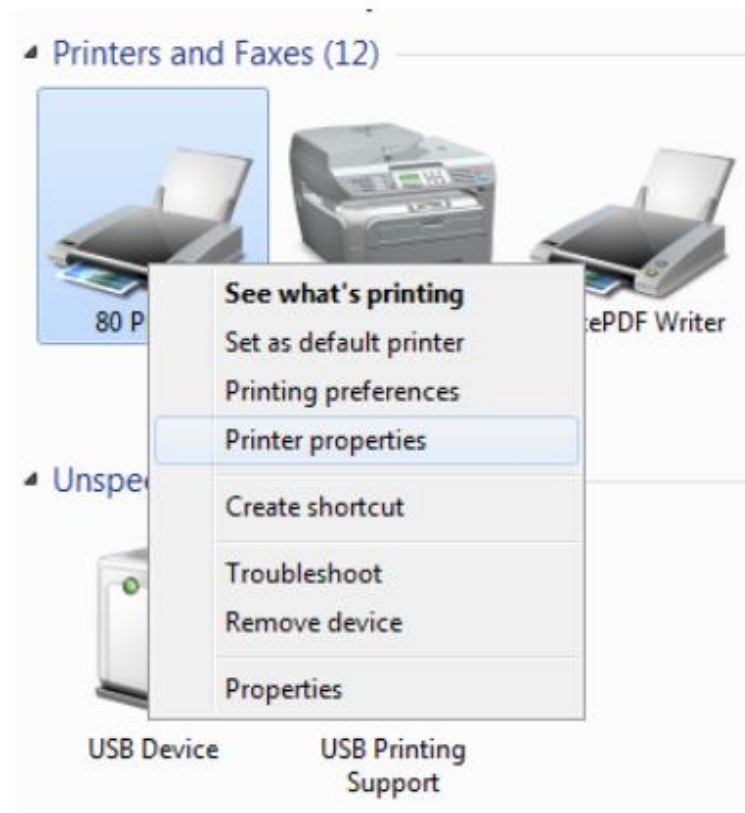
1. Picture size should be less than 64K

2. The width of the picture:

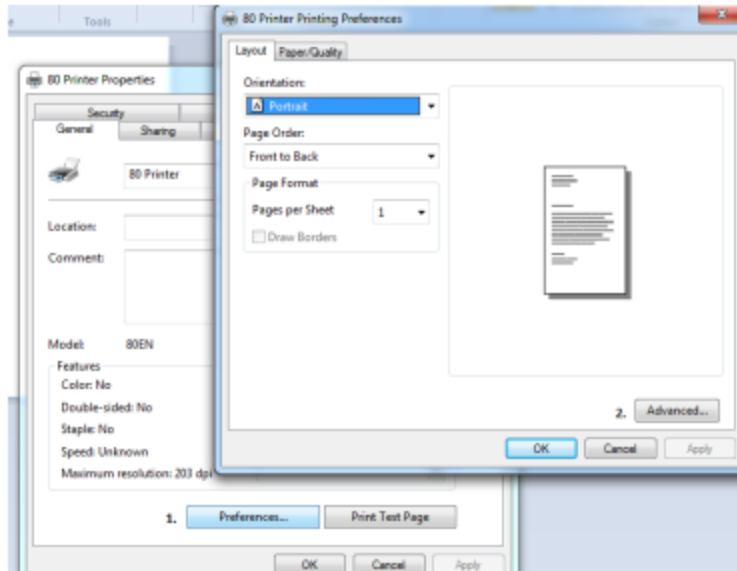
80 the width of the pixel size is less than 567.

58 the width of the pixel size is less than 387.

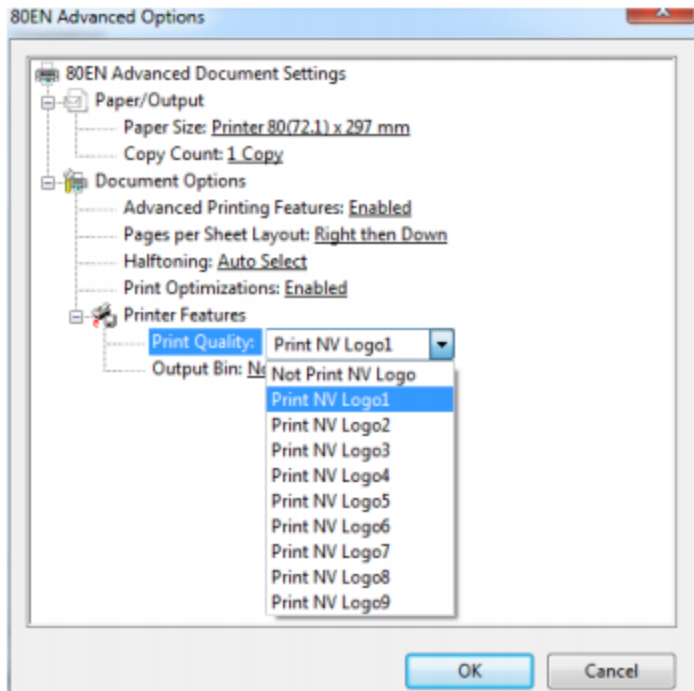
3. Go to Devices and Printers. Right click printer / Printer Properties



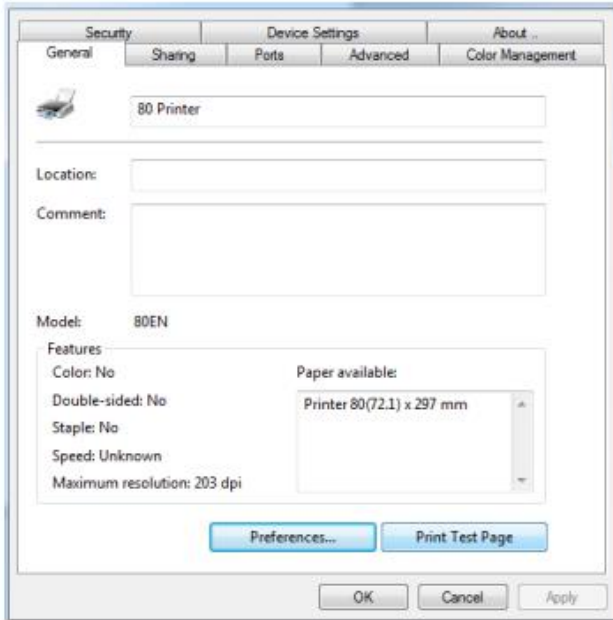
4. Select Preferences / Advanced



5. Select Logo 1 / OK



6. General Tab / Test Print



The Senor Building

65 & 67 Weaver Street
Coopers Plains QLD 4108
Brisbane, Australia

sales@senortech.com.au

www.senortech.com.au

P: +61 7 3275 5888
F: +61 7 3275 5800

