



Release Notes

Storyteller v4.2

This document provides an overview of the new features and enhancement requests that were implemented in this release, and describes any important upgrade advisories and resolved issues. It also outlines the known issues, and workarounds if applicable, that you may experience while using Storyteller v4.2.

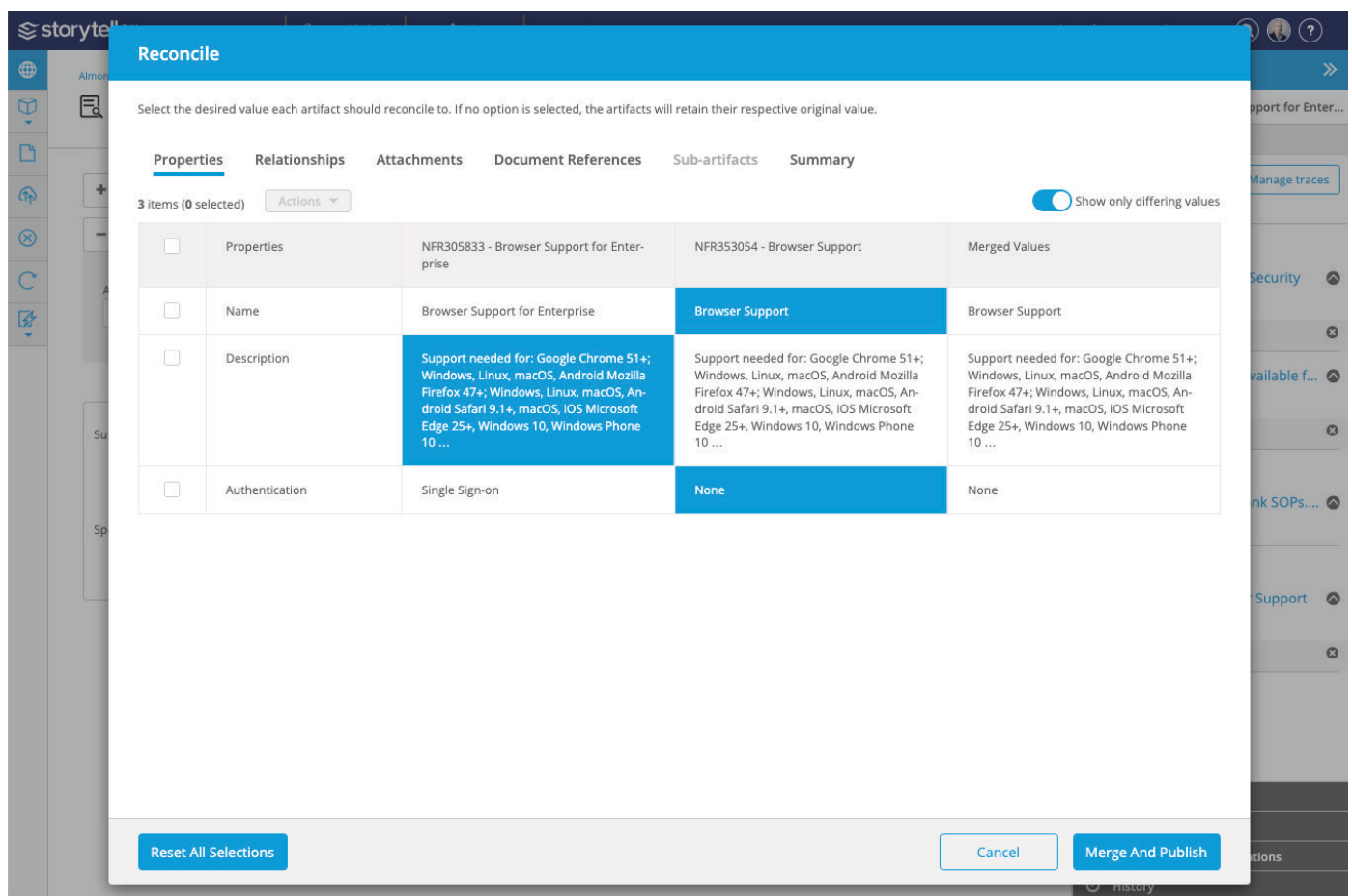
For more detailed information about Storyteller, please refer to the Storyteller product documentation accessible through the product's user interface under "Help".

What's New

Storyteller 4.2 introduces several new features that continue to empower enterprises to accelerate and de-risk solution definition and delivery. New features include the introduction of Reuse - Merge, Glossary artifacts (including Glossary References), and Document Generation. This release also introduces several usability enhancements that optimize how you use Storyteller.

Reuse v2 - Reuse enables artifacts to be extended through a continuous delivery lifecycle and enforces enterprise standards and compliance mandates via a strategic library with controls.

- **Merge** - In this release, Merge has been added to Reuse, allowing you to select the properties, relationships, attachments, sub-artifacts, and documents to maintain when reconciling artifacts. To use this feature, click the Reconcile Reuse Relationship icon in the Relationships tab of the Utility Panel and select Merge. In the Reconcile modal displayed, select the values you want to merge to better align your artifacts.



- **Reuse Intelligent Recommendations** - Storyteller v4.2 also allows you to view and leverage reuse options with Intelligent Recommendations.

In the Intelligent Recommendations tab in the Utility Panel, users can now see recommendations for artifacts to reuse to gain even more efficiencies, quality, and agility. To view and reuse artifacts with Intelligent Recommendations, click the Intelligent Recommendations tab in the Utility Panel, select the artifact or artifacts you want to reuse based on the recommendations provided, and click the Reuse icon.

The screenshot displays the Storyteller v4.2 interface. The main canvas shows a 'Product Survey' form with the following questions and answers:

- 1. When are you filling out this survey? 04/24/2019
- 2. Which city are you using our product in? Toronto (Canada)
- 3. How did you hear about us? Internet Search
- 4. Which features do you find most useful?

The table for question 4 is as follows:

Feature	Completely Agree	Somewhat Agree	Don't Agree
Reuse	x		
Test Plan Generation	x		
User Story Generation	x		
ALM Push	x		
Trace Management	x		
Process Editor	x		

The Utility Panel on the right shows the 'Intelligent Recommendations' tab. It lists several recommendations, including:

- CTL1_280051 - Survey
- RQ158619 - Product Security
- RQ158722 - Product Security
- RQ158881 - Product Security
- RQ158984 - Product Security
- PROD_MOD93546 - Product Su...
- RQ219819 - Environmental Surv...
- RQ182325 - Environmental Surv...
- RQ185571 - Environmental Surv...

Each recommendation has a 'Reuse' icon and a link to 'Authoritative Sources'.

In a Glossary artifact, you can sort the table according to alphabetical or reverse alphabetical order, search for a specific term, and add comments, traces, or attachments to terms at the sub-artifact level.

storyteller

UnpublishedJobsGo To →firewall

Almonte Bank > Enterprise Assets

Almonte Glossary *
Glossary - GL316329

SettingsList

PrintExportRefreshStar

SaveUndoCloseCancelTrashMore

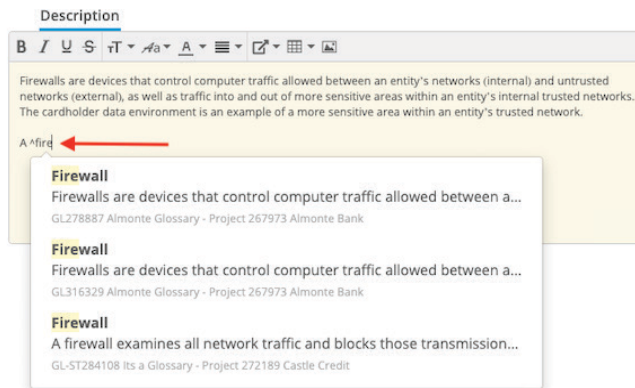
52 items (0 selected)Actions

Search

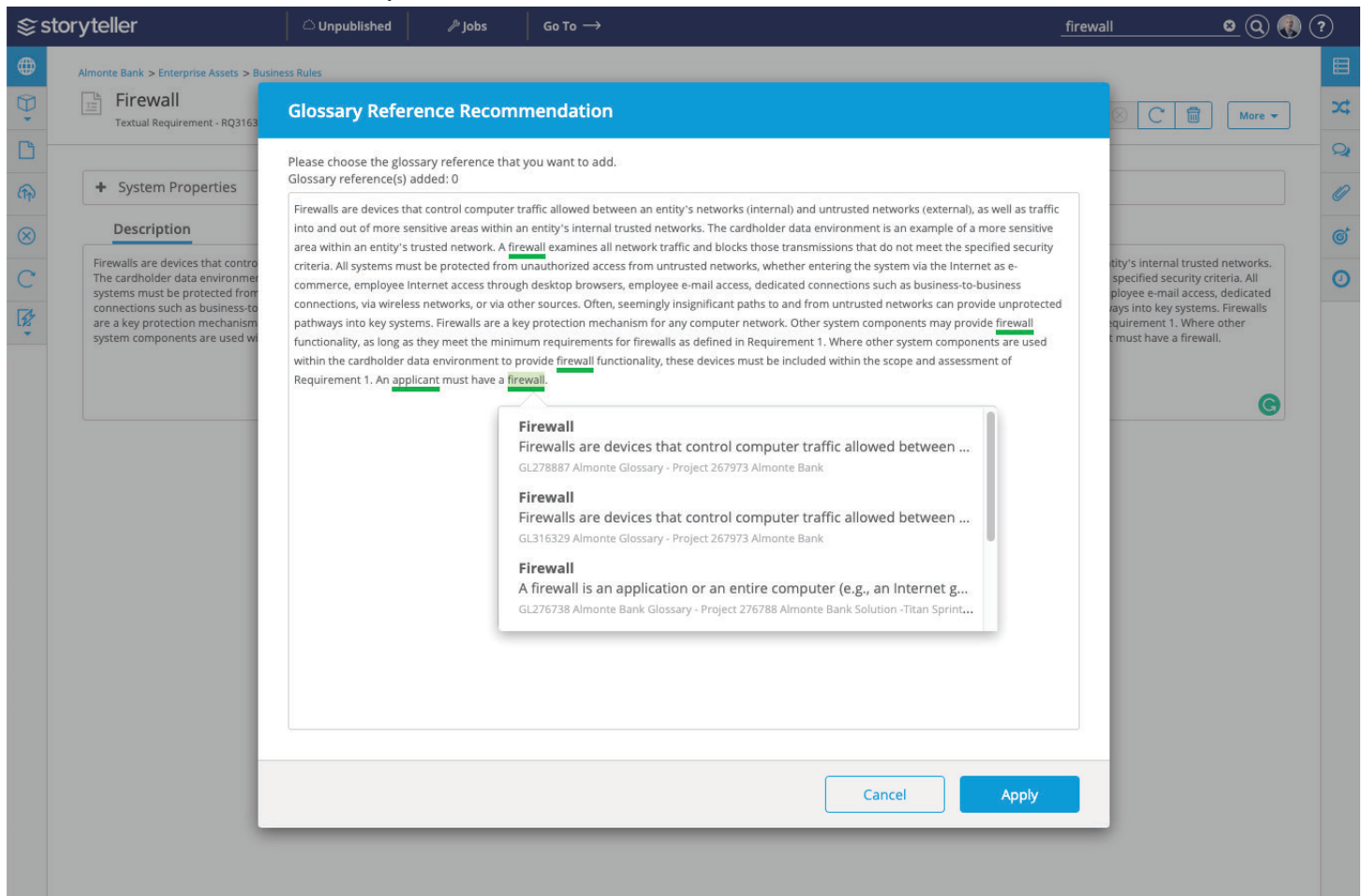
Add Term

	Term	Definition
<input checked="" type="checkbox"/>	<NewTerm1>	
<input type="checkbox"/>	Annual Fees	A yearly fee charged by credit grantors for the privilege of using a credit card.
<input type="checkbox"/>	Annual Percentage Rate	The cost of credit at a yearly rate.
<input type="checkbox"/>	Applicant	A person applying for credit privileges, employment or some other benefit.
<input type="checkbox"/>	Asset	Any thing you own that has value or use.
<input type="checkbox"/>	Authorized Account User	The person authorized by the contractually responsible party to use the account.
<input type="checkbox"/>	Bankruptcy	A proceeding in U.S. Federal Court that may legally release a person from repaying debts owed. The law contains several chapters which relate to different methods of relief:Chapter 7 - Straight Bankru...
<input type="checkbox"/>	Bankruptcy Discharged	A court order terminating bankruptcy proceedings on old debts.
<input type="checkbox"/>	Bankruptcy Dismissed	A court order that denied one's bankruptcy petition making the debtor still liable for all debts.
<input type="checkbox"/>	Budget	A financial plan for saving and spending money.
<input type="checkbox"/>	Charge Card	A card which requires payment in full upon receipt of the statement.
<input type="checkbox"/>	Charge Off	Accounting term to indicate that the creditor does not expect to collect a balance owing on an account.
<input type="checkbox"/>	Collateral	Property acceptable as security for a loan or other obligation.

Glossary References - Storyteller's Glossary allows enterprises to collaborate and reference a shared library of well-defined business and technical terms by leveraging Glossary References. Add a Glossary Reference by entering a caret (^) inline and typing the word you want to add a reference for and see a list of detected glossary terms in your instance.

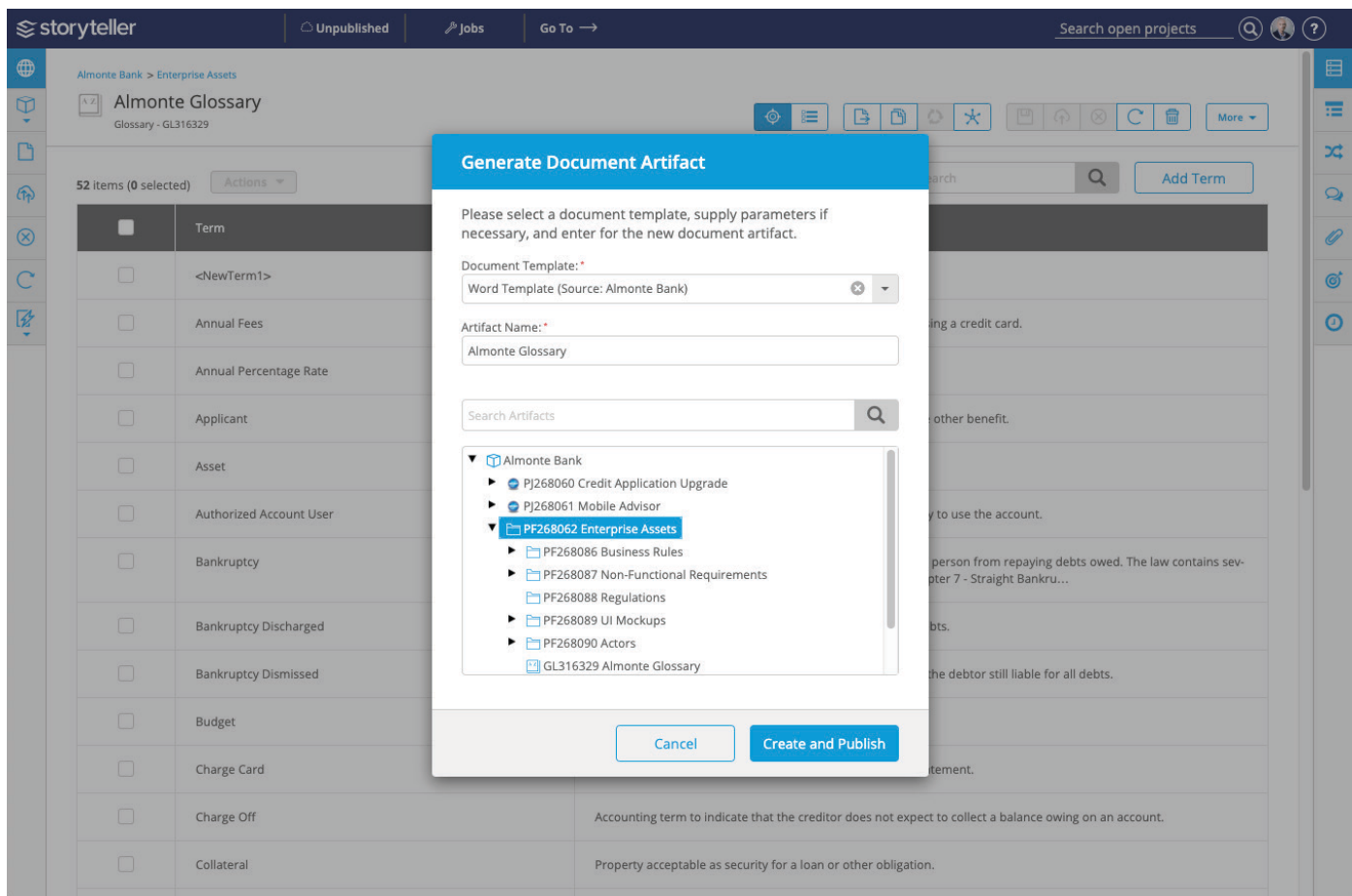


Using the Glossary Recommendation feature scans and detects all your Glossary terms that reside in your instance to automatically add references and promote a common understanding across stakeholders instantly.



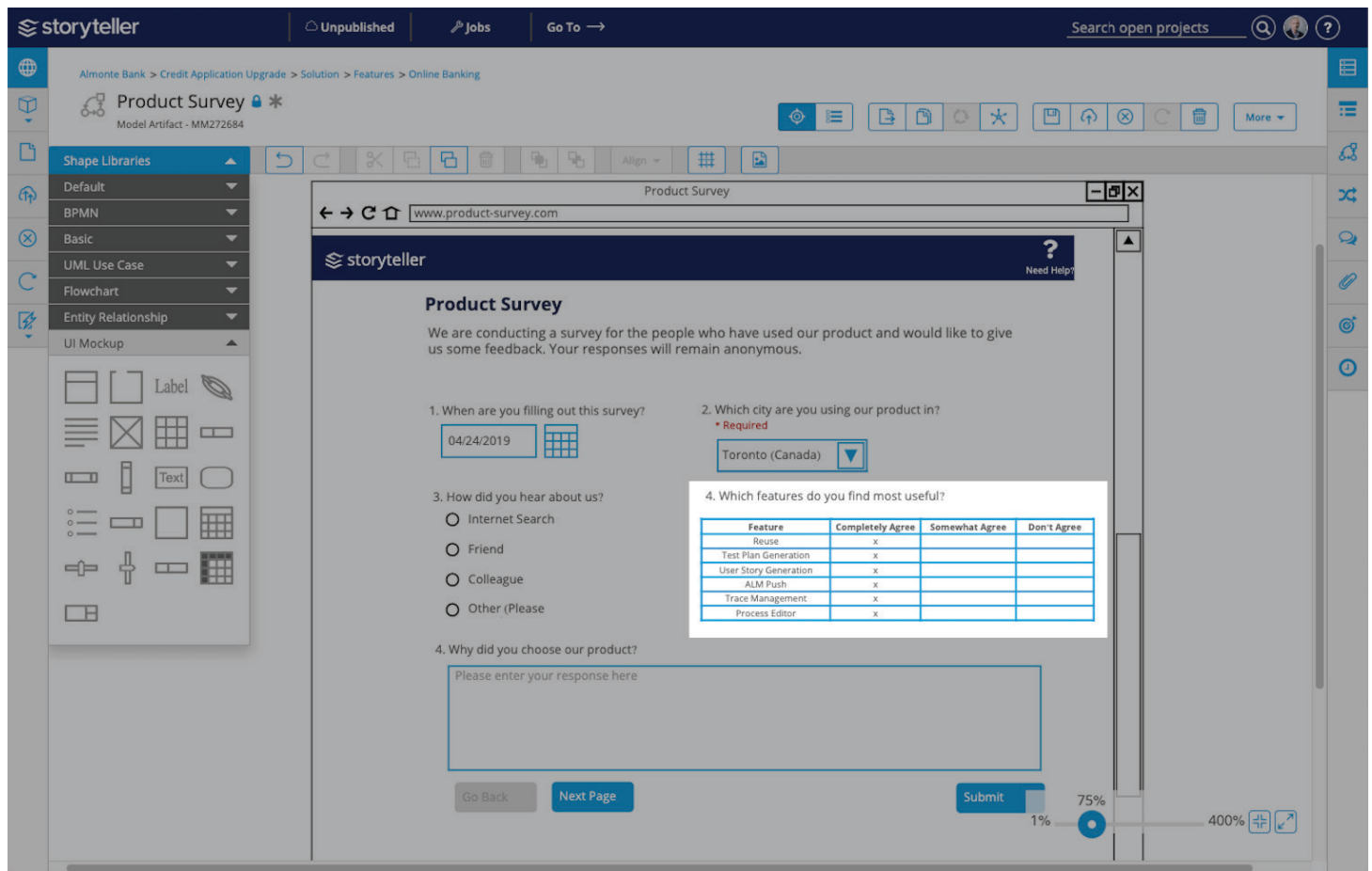
Document Generation - Document Generation ensures compliance by generating documents in a format that is customizable to your various enterprise needs. This allows you to have an offline record of documents for different audiences, in different formats that can be referenced across any artifact in your workspace, enabling reuse and traceability.

You can generate a document for a single artifact or multiple artifacts in the List View or Collections, and this feature can also be used in Baselines and Collections. To generate a document, simply select your customized template and the name and location for your new document artifact.



UME Improvements - A data table shape has been added to the UI Mockup library in the Universal Model Editor (UME) to further extend Storyteller's modelling capabilities.

The data table enhances your ability to communicate and collaborate on the design intent and expected user experience of your solutions. You can annotate each cell in the table and customize font, fill, and borders.



Usability Enhancements - In this release, several enhancements have been added to simplify and reduce the time it takes to perform common actions in Storyteller, including the ability to:

- **Edit the artifact name in the header** - now, editing the artifact name is done directly in the header, instead of doing so in the System Properties.
- **Open recent projects** - see and access your three most recent projects in the modal displayed when opening a project on the Storyteller landing page or in the Explorer.
- **Open multiple projects** - using Ctrl (Win) or Command (Mac), you can now select multiple projects to open at once.
- **Create multiple artifacts** - create multiple artifacts of the same type, when creating new artifacts.
- **Utility Panel indicators** - quickly identify if there are any items in the respective Utility Panel panes, even when it is closed, indicated by an asterisk (*).
- **Clear error and warning messages automatically** - warning and errors messages now automatically disappear after 10 seconds, and don't need to be dismissed or closed manually.

Implemented Enhancement Requests

- In any rich text field, users can now use Glossary Recommendations to have Storyteller automatically detect which terms can have Glossary References established (Issue# ER263198 and ER338850)
- With the appropriate permissions, Glossary artifacts can be created, edited, and managed (Issue# ER347111)

Resolved Issues

The following issues were resolved for Storyteller v4.2:

- When a user receives an email as a result of an @mention in Storyteller, the user is directed right to that artifact if the link contains the artifact ID or any other parameter in the URL, when clicked (Issue# 18479)
- When the <IsALMEnabled> flag is marked false in the installer, the 32-bit job executor service is no longer installed (Issue# 18284)
- Slideshows can now be easily closed with a visible close button on smaller resolution desktop devices (Issue# 355754)

Browser Advisory

For optimal performance and application experience, the latest version of Google Chrome is recommended for use with Storyteller.

If you require further assistance, or if you have encountered a problem that is not listed above, please submit a support case using the Blueprint Community (<https://community.blueprintsys.com>).

About Blueprint

Blueprint is a Gartner-recognized agile planning and compliance management software vendor that is headquartered in Toronto, Canada and has business units across North America and Europe. Storyteller, Blueprint's leading agile planning and compliance management platform, helps enterprise organizations in regulated industries to drive alignment between business, compliance and development stakeholders throughout complex development cycles in order to deliver high-value and compliant product releases significantly faster, and at vastly reduced cost and exposure to risk.

To learn more about Blueprint, visit www.blueprintsys.com or contact us at Info@blueprintsys.com.