



DRS

Customer Release Notes

Version 6.1.10

Disclaimer

Copyright © Advanced Computer Software Group Ltd 2024.

This document contains confidential and/or proprietary information. The content must not be disclosed to third parties without the prior written approval of Advanced Computer Software Group Limited or one of its subsidiaries as appropriate (each referred to as "Advanced"). External recipients may only use the information contained in this document for the purposes of evaluation of the information and entering into discussions with Advanced and for no other purpose.

Whilst Advanced endeavours to ensure that the information in this document is correct and has been prepared in good faith, the information is subject to change and no representation or warranty is given as to the accuracy or completeness of the information. Advanced does not accept any responsibility or liability for errors or omissions or any liability arising out of its use by external recipients or other third parties.

No information set out or referred to in this document shall form the basis of any contract with an external recipient. Any external recipient requiring the provision of software and/or services shall be required to enter into an agreement with Advanced detailing the terms applicable to the supply of such software and/or services and acknowledging that it has not relied on or been induced to enter into such an agreement by any representation or warranty, save as expressly set out in such agreement.

The software (if any) described in this document is supplied under licence and may be used or copied only in accordance with the terms of such a licence. Issue of this document does not entitle an external recipient to access or use the software described or to be granted such a licence.

The development of Advanced software is continuous and the published information may not reflect the current status. Any particular release of the software may not contain all of the facilities described in this document and/or may contain facilities not described in this document.

Advanced Computer Software Group Limited is a company registered in England and Wales with registration number 05965280 whose registered office is at The Mailbox, Level 3, 101 Wharfside Street, Birmingham, B1 1RF

Table of Contents

Customer Release Notes	1
Table of Contents	3
DRS Version 6.1.10.....	1
What's new	2
DRS 6.1.10	2
A closer look	6
New Features	6
DRS-7757 Add a notification to the UPDATE button in the BOOKING HUB after it's clicked	6
DRS-7896 Allow users to update Advanced filters in personal views	7
Fixes	8
DRS-6898 MultiDay True and MultiTrade False - "More than one job will be created with the supplied SOR codes	8
DRS-7422 Can't create a project package template	9
DRS-7428 The PP worker picker does not filter on pp ability - if blank on the worker	9
DRS-7476 Today's completed appointments by completion status chart.....	9
DRS-7630 Map - Closest Worker - Show worker with variability no longer valid.....	10
DRS-7652/7319/7776 Unable to remove Opening Hours from Job	10
DRS-7666 update task status button does not work until the second attempt on jobs older than 14 days	10
DRS-7699 Jobs with 0.25 SOR quantity being rejected by DRS	11
DRS-7702 PP Order Amends via Flat Files are replicating the original SORs	11

DRS-7708 2 op visits with different durations showing longer duration	11
DRS-7709 Appointment status 'acknowledged' / 'arrived' enabled	12
DRS-7720 Reset button isn't fully clearing down existing filter	12
DRS-7737/7796 Flat file OrderAmend ignores ImportSMV value .	12
DRS-7743 MariaDB has known vulnerability	12
DRS-7744 Current version of SoapUI included with 6.1 includes Log4j. needs upgraded	13
DRS-7745 Follow On Service filters out default template.....	13
DRS-7753 Spelling error in Error message.....	13
DRS-7754 Setup DELIVERY task should remove all .github folder/subfolders	13
DRS-7782 Reassign from the Appointments tab	14
DRS-7786/7791 CloseSession is called when a slots or WBM popup is closed	14
DRS-7793 Unable to create PP Order via web service if target date is in the past.....	15
DRS-7816 Unable to retrieve appointments using DRS APIs	15
DRS-7819 Schedule Now, Bulk Action Error.....	15
DRS-7829 Appointment confirmation line numbers incorrect	16
DRS-7831 Unable to import worker export file	16
DRS-7854 Unable to display SOR template details	17
Release list of Components	18
Internal Component Versions	18
External Component Versions	19
Contact us	20

DRS Version 6.1.10

Development of DRS Version 6.1.10 is now complete and was released in February 2024.

DRS 6.1.10 Contains a number of small fixes alongside an infrastructure upgrade which requires a full upgrade.

What's new

This section describes the new or improved features we have introduced in this release and key fixes and improvements.

DRS 6.1.10

NEW	DRS-7757	Add a notification to the UPDATE button in the BOOKING HUB after it's clicked
NEW	DRS-7896	Allow users to update Advanced filters in personal views
FIXED	DRS-6898	MultiDay True and MultiTrade False - "More than one job will be created with the supplied SOR codes."
FIXED	DRS-7422	Can't create a project package template
FIXED	DRS-7428	The PP worker picker does not filter on pp ability - if blank on the worker
FIXED	DRS-7476	Today's completed appointments by completion status chart
FIXED	DRS-7630	Map - Closest Worker - Show worker with

variability no longer valid

FIXED	DRS-7666	update task status button does not work until the second attempt on jobs older than 14 days.
FIXED	DRS-7699	Jobs with 0.25 SOR quantity being rejected by DRS
FIXED	DRS-7702	PP Order Amends via Flat Files are replicating the original SORs
FIXED	DRS-7708	2 op visits with different durations showing longer duration
FIXED	DRS-7709	Appointment status 'acknowledged' / 'arrived' enabled
FIXED	DRS-7720	Reset button isn't fully clearing down existing filter
FIXED	DRS-7737 DRS-7796	OrderAmend ignores ImportSMV value
FIXED	DRS-7743	MariaDB has known vulnerability

FIXED	DRS-7744	Current version of SoapUI included with 6.1 includes Log4j.
FIXED	DRS-7745	Follow On Service filters out default template
FIXED	DRS-7753	Spelling error in Error message
FIXED	DRS-7754	Setup DELIVERY task should remove all .github folder/subfolders
FIXED	DRS-7776 DRS-7319 DRS-7652	Unable to remove Opening Hours from Job
FIXED	DRS-7782	Reassign from the Appointments tab
FIXED	DRS-7786 DRS-7791	CloseSession is called when a slots or WBM popup is closed
FIXED	DRS-7793	Unable to create PP Order via web service if target date is in the past
FIXED	DRS-7816	Unable to retrieve appointments using DRS APIs

FIXED	DRS-7819	Schedule Now, Bulk Action Error
FIXED	DRS-7829	Appointment confirmation line numbers incorrect
FIXED	DRS-7831	Unable to import worker export file
FIXED	DRS-7854	Unable to display SOR template details

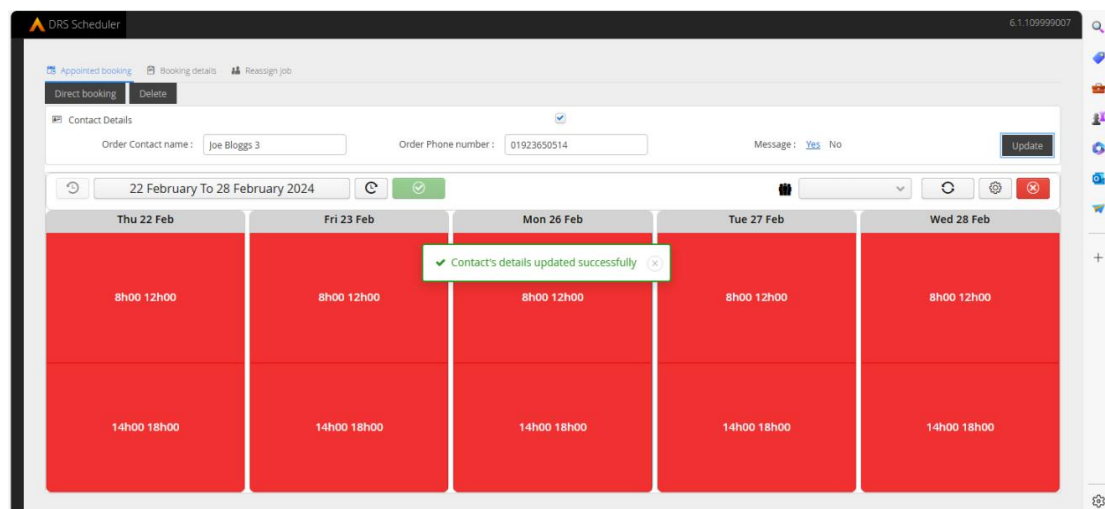
A closer look

This section provides extended information on key features and fixes

New Features

DRS-7757 Add a notification to the UPDATE button in the BOOKING HUB after it's clicked

When updating contact details or booking details within the booking hub a confirmation message will now be displayed to the user.

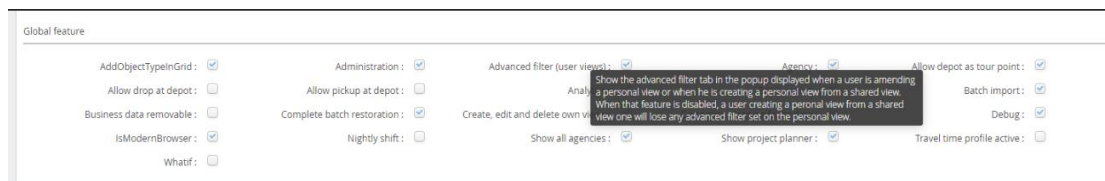


Additionally, an issue where an error would be shown when updating tabs 2 and 3 has been fixed and will no longer show.

DRS-7896 Allow users to update Advanced filters in personal views

Users are now able to save shared views that use advanced filter sets as personal views if they have the corresponding setting set as true.

The new setting is called 'Advanced filter (user views)' and can be found under the global feature section of the Screen configuration options screen.



Additionally, the 'Complex view filter' option has been removed as this setting no longer has any valid use.

Fixes

DRS-6898 MultiDay True and MultiTrade False - "More than one job will be created with the supplied SOR codes"

When there are situations where two different SORs with different job templates are used that have a combined time that is more than a single day. The user is presented with a "More than one job will be created with the supplied SOR codes." Error

using the following example, we can describe how the SORs are now broken down for each setting combination

example. 2 different SORs with two different job templates(60min BRICKLAYER & FENCER 105min*5)

UseMultiDay - False, UseMultiTrade - False

One job created on the invalid template with the total duration, 585 minutes.

UseMultiDay - True, UseMultiTrade - False

Two jobs created on the invalid template with the first duration set at the full day, 420 minutes, and the second job's duration set as the remainder, 165 minutes.

UseMultiDay - False, UseMultiTrade - True

Two jobs created, the first on the Bricklaying template with a duration of 60, the second on the fencing template with a duration of 525.

UseMultiDay - True, UseMultiTrade - True

Three jobs created, the first on the Bricklaying template with a duration of 60, the other two on the Fencing template with the first duration of 420 and the second set to the remainder, 105 minutes.

DRS-7422 Can't create a project package template

If projectpackagetable did not exist as a job template users would encounter an error message when trying to create a project package template.

this has been corrected so that if projectpackagetable doesn't exist as a job template the link will be replaced with "choose template" so that a valid template can be saved.

DRS-7428 The PP worker picker does not filter on pp ability - if blank on the worker

From the forced assignment screen, the select worker popup did not filter the worker from the project package ability correctly. If the ability was blank against the worker, it would still show them as a matching worker.

An additional check has been added to the process which checks if the template is a pp template before getting possible workers. If the job is a pp job then only workers with the pp ability will be returned.

DRS-7476 Today's completed appointments by completion status chart

On the home screen the completed appointments by status chart was not correctly showing the correct data.

although the correct data was gathered for the chart the process to display that on the chart was incorrect and has now been fixed.

DRS-7630 Map - Closest Worker - Show worker with variability no longer valid

When asking to show closest worker on the map, works that have had a variability but it has already ended will still be shown as valid options.

This was caused by the check for skills not including their time windows. This has been updated so that the time window for the skills is now also considered.

DRS-7652/7319/7776 Unable to remove Opening Hours from Job

When editing orders the 'order opening hours' setting was automatically being set as true. If no time was then set, it would result in any attempt to book it failing.

The setting has been adjusted so that by default it will be false, and will remain so unless changed by the user.

DRS-7666 update task status button does not work until the second attempt on jobs older than 14 days

When updating the task status of a job from the view, if it is over 14 days old it would not update and stay on the view until you do it again whereas Jobs less than 14 days old updated first time

This was because the jobs had been moved into the archive, the first attempt to update the status would restore the job to the jobs table but not update the status, the subsequent attempt would then update as expected.

This has now been fixed so that the job will be updated in a single action regardless of if it is archived or not.

DRS-7699 Jobs with 0.25 SOR quantity being rejected by DRS

PP was refusing to create projects with SORs with a value less than 1. This was however possible in the legacy version of project planner.

This has been updated to match the legacy versions behaviour and should now create with SORs with a value great than 0.

DRS-7702 PP Order Amends via Flat Files are replicating the original SORs

When processing Order Amends via flat file, rather than amending the SORs on the order, the new versions of the same SOR would be added.

This has been corrected so that existing SORs will now be correctly updated and only new SORs will be added.

DRS-7708 2 op visits with different durations showing longer duration

In some situations where two operatives are assigned to a job with differing durations. The calendar will incorrectly show both operatives with the longer duration.

A number of small fixes have been made that should allow individual operatives durations shown correctly on the calendar at all time.

DRS-7709 Appointment status 'acknowledged' / 'arrived' enabled

When logged in as an administrator features would always be shown as enabled, leading to confusion when the feature was actually disabled.

The administrator profile has been altered so that the feature setting will accurately reflect the if the features are enabled or disabled.

DRS-7720 Reset button isn't fully clearing down existing filter

When using the reset button on a search screen it would not fully reset the search filters to it's original state.

This has been adjusted so that on all search screens when clicking the reset button, all filters will be removed and any existing result set will be cleared.

DRS-7737/7796 Flat file OrderAmend ignores ImportSMV value

When using an OrderAmends as a flat file, if ImportSMVValues was set false in opt_property, the SMV values from the flat file were still used.

This has been corrected so that if ImportSMVValues is set false, it will always use the default values from the SOR template.

DRS-7743 MariaDB has known vulnerability

A vulnerability has been detected in MariaDB 10.6.16

The used version of MariaDB has been updated to 10.6.17 which resolves the vulnerability.

DRS-7744 Current version of SoapUI included with 6.1 includes Log4j. needs upgraded

The version of SoapUI included a component which was still using the vulnerable Log4j 1.x

We have updated the SoapUI component to 5.7.2 which no longer includes any use of log4 1.x.

DRS-7745 Follow On Service filters out default template

When creating follow ons the default template is not available from the template selector.

When creating a follow on the popup now has a combo selection box which will allow the selection of the follow on template. the combo box filters all not allowed follow on templates regarding the parent job status and the service order status.

DRS-7753 Spelling error in Error message

When loading a project with a period that is too old the error message displayed contained a spelling mistake.

'Beyond' has been corrected to 'beyond' in the error message text.

DRS-7754 Setup DELIVERY task should remove all .github folder/subfolders

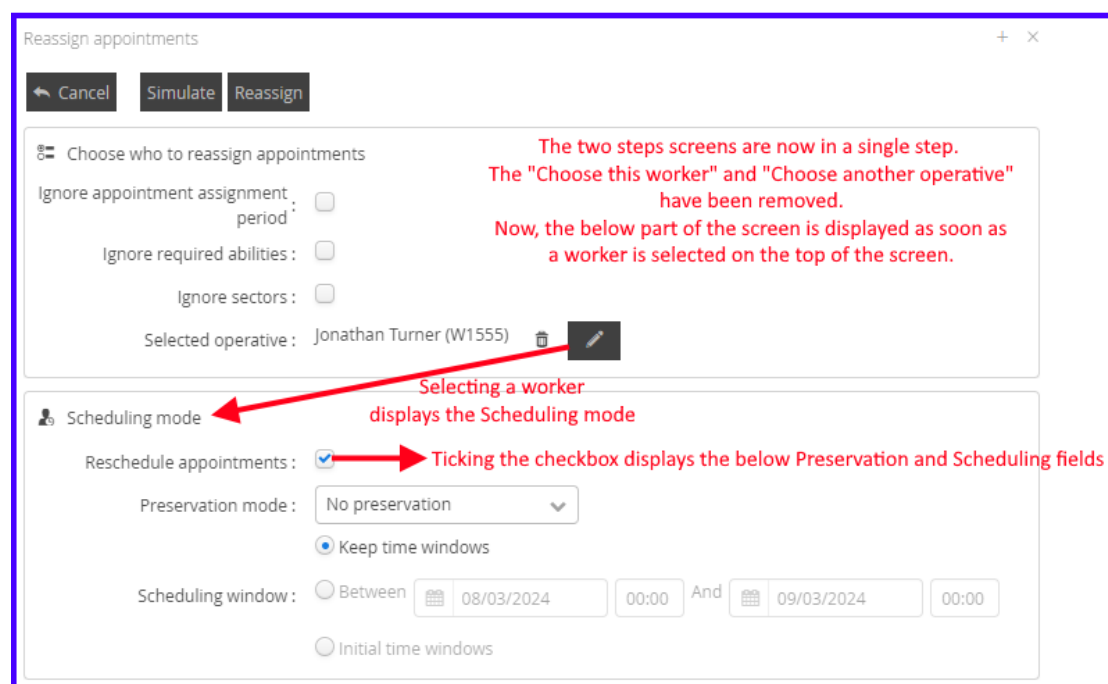
When building DRS for delivery a .github folder was still included in the final build which was not needed.

This folder is no longer included in the file structure.

DRS-7782 Reassign from the Appointments tab

In some situations attempting to reassign from the appointments tab would result in a success message but not change was made.

The process has been altered so that it will correct reassign as expected. Additionally it was noted that a number of sections of the UI for this process were poorly presented or lacked clarity so the UI has also been updated to make the process easier including tooltips to describe the function of each option.



DRS-7786/7791 CloseSession is called when a slots or WBM popup is closed

A closeSession is called from the SUI when a popup window is closed (timeslots or wbm). The session shouldn't close if we have come in through a direct jump

because this session will still be used by the client application after the slots have been selected.

Closing a popup called from another application will no longer close the session.

DRS-7793 Unable to create PP Order via web service if target date is in the past

The DRS webservice rejected all PP createOrder requests where the Target Date was in the past.

Updated so that when sending a create order request through web service gateway for project planner where the target date is in the past, it will now apply the value of `optimeweb.ExtendTargetDateAndPWDaysToAdd` if `optimeweb.ExtendTargetDateAndPWIfInPast` is true.

DRS-7816 Unable to retrieve appointments using DRS APIs

In some certain situations users were unable to retrieve available appointments using the API

It was found that certain contracts had a prefix value that contained a space but no real data. The process of adding prefix and organisation have been adjusted to trim any added whitespace to resolve this issue.

DRS-7819 Schedule Now, Bulk Action Error

For some users when selecting multiple jobs and clicking 'Schedule Now' after setting their options and attempting to schedule the process would become stuck with zero progress.

This is a regression of a previous issue resolved in 6.1.8 where the sessions was not accessible in background tasks. in a specific case the previous fix could still result in a missing session. This has now been resolved and the process should work as expected.

DRS-7829 Appointment confirmation line numbers incorrect

In the XML that is being sent for the appointment confirmation to OpenHousing, the line numbers are all the same, and they should be unique.

Updated so that when creating an appointment confirmation through background service with the Northgate interface it will be able to get the correct line number from the sor codes.

DRS-7831 Unable to import worker export file

Some users were having issues when attempting to import a worker.csv file resulting in an error stating "Operative file: Invalid content. : ColumnOrderException: null"

The issue was with the extra rows in the export file where a worker had more than one working hours calendar. It wasn't adding in the blank fields on the extra rows so that the time table calendar details started at the correct position on the line.

This has been fixed so the export file is in the correct format and can now be imported as expected.

DRS-7854 Unable to display SOR template details

if a standard sor template is selected which doesn't have a PP sor template equivalent, then it will fail to return the details and display an error instead.

Updated so that it is able to select the correct sor template details from the UI for both PP and standard SOR templates.

Release list of Components

Internal Component Versions

Function	Version
DRS Server (Kernel)	6.3.1.9
Background Service	6.1.10
Connector Services	6.1.10
Inbound Connector	6.1.10
Mobile Gateway	6.1.10
Project Planner	6.1.10
Utility Service	6.1.10
DRS Web Services Gateway	6.1.10
Archive/Housekeeping	6.1.10
UK Geocoding Postcode Database	07/2022

External Component Versions

Description	Version
Apache	2.4.58.0
Java	8.372.07.1
MariaDB	10.6.17.0 (From 10.6.12.0)
MariaDB JavaClient (JDBC)	3.1.2
php	8.2.11.0
Tomcat	9.0.75.0
Tomcat Native	2.0.3.0
.Net	4.7
SoapUI	5.7.2 (From 5.5.0)

Contact us

At Advanced we strive to build intuitive products, but we also know that from time to time you may need a little extra help. That's why we offer useful support resources that you can dip in and out of when you need it. However, if you need help and support beyond the information provided here, the following are also available:

- Visit the [🔗](#)
- Make a general enquiry on 03300 602 102
- Contact us via the [Advanced website 🔗](#)

More information

w [oneadvanced.com](https://www.oneadvanced.com)
t 03300 602 102

The Mailbox, Level 3, 101 Wharfside Street, Birmingham, B1 1RF

Advanced Computer Software Group Limited is a company registered in England and Wales under company number 05965280, whose registered office is The Mailbox, Level 3, 101 Wharfside Street, Birmingham, B1 1RF. A full list of its trading subsidiaries is available at www.oneadvanced.com/legal-privacy.