



# Job Manager

## Customer Release Notes

Version 9.1.0

Work Hub enhancement for van stock and warehouse stock.

# Disclaimer

Copyright © Advanced Computer Software Group Ltd 2023.

This document contains confidential and/or proprietary information. The content must not be disclosed to third parties without the prior written approval of Advanced Computer Software Group Limited or one of its subsidiaries as appropriate (each referred to as "Advanced"). External recipients may only use the information contained in this document for the purposes of evaluation of the information and entering into discussions with Advanced and for no other purpose.

Whilst Advanced endeavours to ensure that the information in this document is correct and has been prepared in good faith, the information is subject to change and no representation or warranty is given as to the accuracy or completeness of the information. Advanced does not accept any responsibility or liability for errors or omissions or any liability arising out of its use by external recipients or other third parties.

No information set out or referred to in this document shall form the basis of any contract with an external recipient. Any external recipient requiring the provision of software and/or services shall be required to enter into an agreement with Advanced detailing the terms applicable to the supply of such software and/or services and acknowledging that it has not relied on or been induced to enter into such an agreement by any representation or warranty, save as expressly set out in such agreement.

The software (if any) described in this document is supplied under licence and may be used or copied only in accordance with the terms of such a licence. Issue of this document does not entitle an external recipient to access or use the software described or to be granted such a licence.

The development of Advanced software is continuous and the published information may not reflect the current status. Any particular release of the software may not contain all of the facilities described in this document and/or may contain facilities not described in this document.

Advanced Computer Software Group Limited is a company registered in England and Wales with registration number 05965280 whose registered office is at The Mailbox, Level 3, 101 Wharfside Street, Birmingham, B1 1RF.

# Table of Contents

|   |          |
|---|----------|
| <b>Job Manager Version 9.1.0 .....</b>                      | <b>1</b> |
| What's new .....  | 2        |
| A closer look .....   | 6        |
| Stock System Enhancements .....                             | 6        |
| General Improvements .....                                  | 11       |
| Fixes .....   | 12       |
| Release advisory .....                                      | 16       |
| Update procedure .....                                      | 17       |
| Interactivity / Database schema changes / API changes ..... | 18       |
| Database Schema Changes .....                               | 18       |
| API Changes .....   | 18       |
| Professional Services API .....                             | 18       |
| Changes affecting application operation and support .....   | 19       |
| Contact us .....  | 20       |



# Job Manager Version 9.1.0

Development of Job Manager Version 9.1.0 is now complete and was released in December 2022. This document contains a summary of [what's new](#).

Version 9.1.0 is primarily focused on refinement and iteration of the stock module based on user feedback. Along side this a number of fixes and improvements to the rest of the application have been made to improve the product for all users.

## What's new

This section describes the new or improved features we have introduced in this release, plus priority fixes.

### Stock Improvements

|            |   |
|------------|---|
| <b>NEW</b> | JM-20434 Allow users to cancel unprocessed transfers.               |
| <b>NEW</b> | JM-20506 New Stock Enquiry page                                     |
| <b>NEW</b> | JM-20438 Remove Legacy Stock enquiry page and code.                 |
| <b>NEW</b> | JM-20510 merge vans and Warehouses menu options.                    |
| <b>NEW</b> | JM-20511 Create Supplier catalogue area                             |
| <b>NEW</b> | JM-20512 add process to allow for over-receipting                   |
| <b>NEW</b> | JM-20519 Add ability to print off Stocktake sheet.                  |
| <b>NEW</b> | JM-20520 allow manual entry of stocktake recording time in CC.      |
| <b>NEW</b> | JM-20521 Create stock transfer for multi-items in a single process. |

**NEW**

JM-20555 Add a switch to exclude reserved stock from replenishment calculation

---

**NEW**

JM-20660 Add switch to select online / Paper based stock takes.

---

**NEW**

JM-20937 Link Supplier catalogue data to material code preferred supplier and cost fields.

---

**NEW**

JM-20507 Add ability to change the location type for a stock location

---

**NEW**

JM-20508 Add a warning at job completion to check if stock has been correctly recorded if no stock usage recorded.

---

**NEW**

JM-20509 Rename and move stock levels screen.

---

## General Improvements

|            |   |
|------------|---|
| <b>NEW</b> | JM-20071 Asset Popup now has Summary Panel Split into Two Column View   |
| <b>NEW</b> | JM-19723 Errors reported to jclient should not have a log reference if no actual log message is generated.      |
| <b>NEW</b> | JM-20262 Resource Criteria - Remove need for operative to have had / have a Job assigned to appear in the list. |
| <b>NEW</b> | JM-20399 Create FMS config Screen.  |
| <b>NEW</b> | JM-20439 Create a standard "reset criteria" button to all search pages with criteria.                           |
| <b>NEW</b> | JM-20820 Create / Update notification of job changes to send updates to a jobs scheduling details.              |
| <b>NEW</b> | JM-20886 add location + accuracy to status changes in CC.   |
| <b>NEW</b> | JM-20887 Update Webservice API to include location + accuracy for status changes in GetJob                      |
| <b>NEW</b> | JM-20347 Upgrade or replace Log4j   |



## Fixes

|              |   |
|--------------|---|
| <b>FIXED</b> | JM-20377 Cannot add stock usage to a job in Control Centre                  |
| <b>FIXED</b> | JM-20405 JM Control Centre Saved Search Issue                               |
| <b>FIXED</b> | JM-20495 JM / Work Hub / Cost Calculations spanning multiple days incorrect |
| <b>FIXED</b> | JM-20499 Unable to update gas safe number of operative                      |
| <b>FIXED</b> | JM-20586 Child job line Photos not displaying in PDF Documents              |
| <b>FIXED</b> | JM-20595 Show no results if no jobs at same location as an asset.           |
| <b>FIXED</b> | JM-20786 Add some indexes to JM to improve the performance                  |
| <b>FIXED</b> | JM-20597 Performance - Improve resource search.                             |

# A closer look

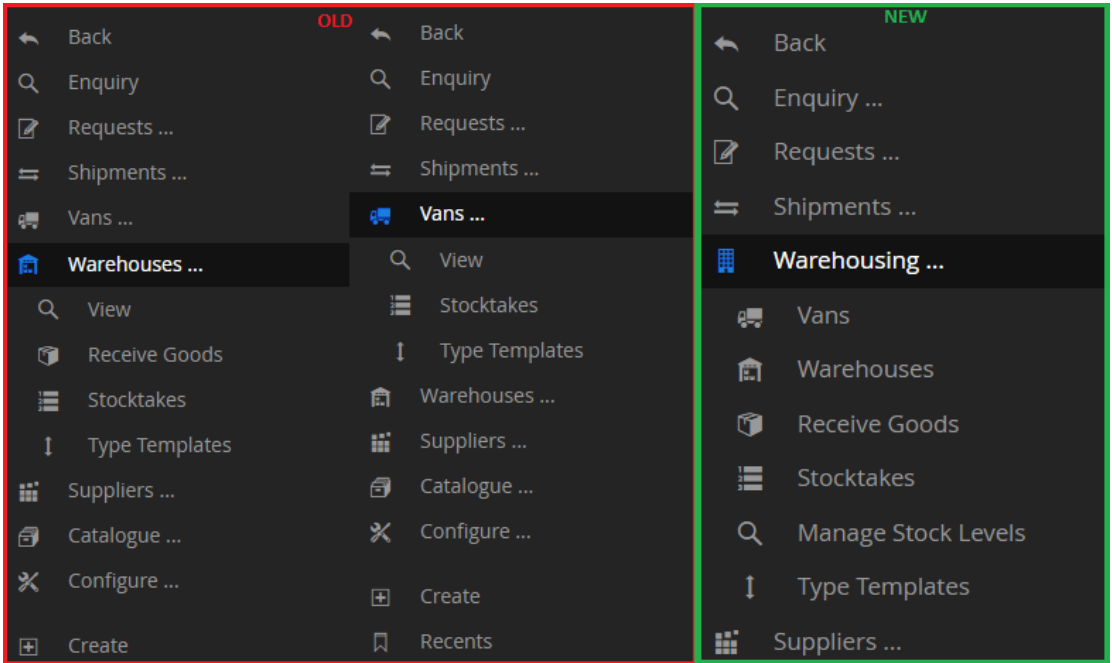
This section provides extended information on key features.

## Stock System Enhancements

Following on from the new stock systems introduced in V9.0.0 several changes and improvements have been made based on user feedback to further refine the process of managing stock within Job Manager. In the Section we will describe the changes made in a bit more detail.

merge vans and Warehouses menu options.

It was noted that the menu options for both Vans and Warehouses effectively were duplicating themselves. We’ve taken the decision to restructure these menu options a little to make it more streamlined and reduce needless duplication.



## New Stock Enquiry page

The existing 'Stock Enquiry' page wasn't particularly well named, its purpose was more focused around managing stock levels and its ability to look up stock details was a secondary function of the screen. We've moved the existing screen into the warehousing section and renamed it to 'Manage stock levels' which better represents it's intended function.

Additionally, we have added a new Stock Enquiry page which in the place of the old enquiry page. The new Enquiry page is specifically aimed for users making an actual enquiry into where a certain stock item is held within the business.

Stock Totals

Stock

QA-Material\_1 [QA-MATERIAL\_1]

Location

QA-Van1 [QA-Van]

Total QA-Material\_1 [QA-MATERIAL\_1]

|          |           |                 |
|----------|-----------|-----------------|
| In Stock | Allocated | Free Stock      |
| 270      | 0         | 270             |
| On Order |           | Projected Stock |
| 0        |           | 270             |

At QA-Van1 [QA-Van]

|          |           |                 |
|----------|-----------|-----------------|
| In Stock | Allocated | Free Stock      |
| 15       | 0         | 15              |
| Inbound  |           | Projected Stock |
| 0        |           | 15              |

7

### Create Supplier catalogue area

Within the Item catalogue we added the ability to set a preferred supplier for an item, this could be used to feed into a purchasing system to dictate who should supply this item by default. What this didn't do was allow a reference to any other suppliers that may be able to provide the item and their respective pricing.

We've now added a supplier catalogue area which allows users to link items to a supplier and set specific costings for the item per supplier allowing for much more flexibility when purchasing.

Note: the preferred supplier area on the item listing is now a dropdown selection of the linked suppliers, so this will require setting up supplier catalogues before selecting preferred suppliers of an item.

Reference Data Manager (Stock) ⚙️

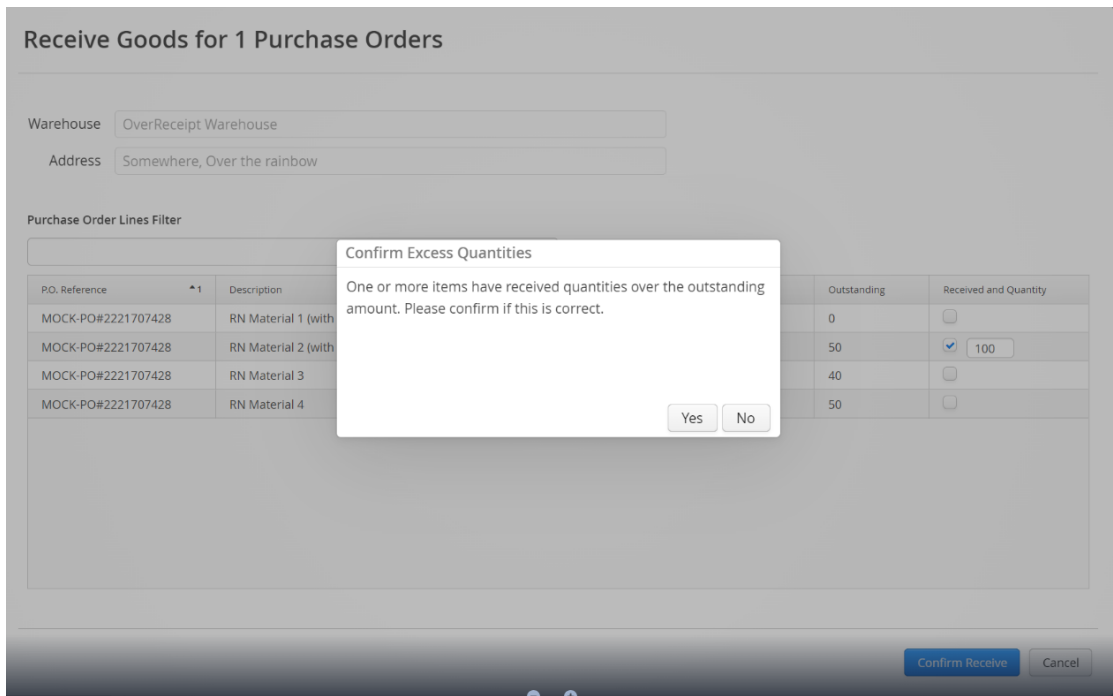
Type  
Supplier Material ▼

Material Code ▼ Supplier Code ▼ Supplier Material Code ▼ 🔍 📄 + 📥

|                          | Material Code | Supplier Code | Supplier Material Code | Supplier Material Cost | Minimum Order Quantity |
|--------------------------|---------------|---------------|------------------------|------------------------|------------------------|
| <input type="checkbox"/> | QA-MATERIAL_1 | test          | 1234567                | 10.00                  | 10                     |

add process to allow for over-receipting

On occasions when a supplier delivers too many of an item there was no way to handle this within JM. We have now added the ability to over receipt an item line, allowing users to properly book in everything that arrives and have no instances of stock in the business that are not accounted for in the system.



### Add switch to select online / Paper based stock takes

For warehouse workers that do not have access to a handheld device to carry out stock takes we have added the ability to manage stocktakes on paper. In this process the stock take can be created then printed off as a list to be filled with both the amount recorded and the date and time the recording is done. This can then be entered into control centre and the stocktake will complete in the same way as if it were all done on a device.

The image shows a 'Create Stocktake' form and a calendar widget. The form has the following fields:

- Location \*: QA-Warehouse5 (dropdown)
- Category \*: All Categories (dropdown)
- ☐ Blind Stocktake
- ☒ Offline (highlighted with a red box)

At the bottom of the form are 'Create' and 'Cancel' buttons. To the right, a calendar widget for January 2023 is shown, with the date 3 highlighted. A red box highlights the calendar widget. Above the calendar, a dropdown menu is open, showing 'End Stocktake' and 'Print Stocktake' (highlighted with a red box).

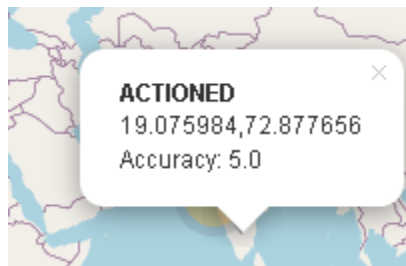
## General Improvements

### Upgrade or replace Log4J

Whilst Job Manager was largely unaffected by the Log4J security incident last year it has prompted us to bring our libraries up to date to ensure that the application is as secure as it can be and meets both our internal and our customers external compliance requirements.

add location + accuracy to status changes in CC.

Whilst it was recorded by the device, we were not making full use of the location and accuracy readings taken when changing a job status. This is now fully integrated and is visible within CC and available via the GetJob API call.



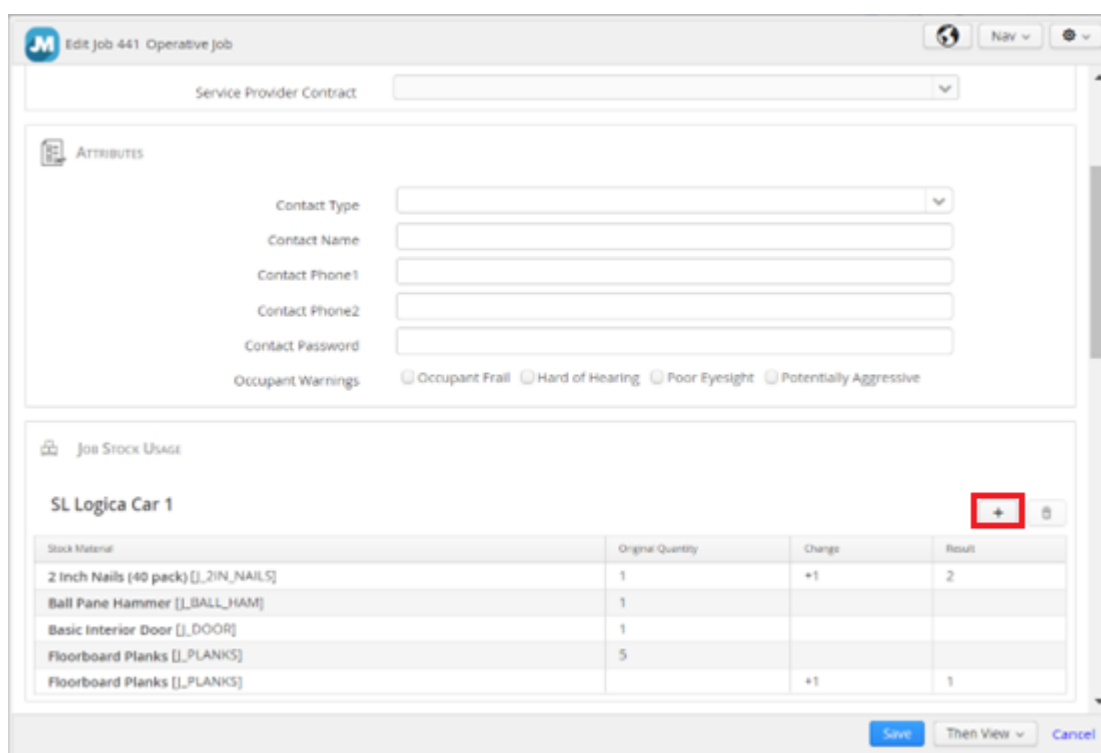
```
137     <jm:statusHistory>
138         <jm:id>2147483982</jm:id>
139         <jm:statusCode>WITH_OPERATIVE:ACCEPTED</jm:statusCode>
140         <jm:userName>OPER</jm:userName>
141         <jm:effectiveDateTime>2022-11-01T14:20:50Z</jm:effectiveDateTime>
142         <jm:transactionDateTime>2022-11-01T14:20:50Z</jm:transactionDateTime>
143         <jm:location>
144             <jm:latitude>51.507351</jm:latitude>
145             <jm:longitude>-0.127758</jm:longitude>
146         </jm:location>
```

## Fixes

### JM-20377 Cannot add stock usage to a job in Control Centre

Both New transactions and editing the values of an existing stock transaction can now be managed through the control centre UI.

This can only be done up to the ACTIONED phase.



The screenshot shows the 'Job Stock Usage' section for 'SL Logica Car 1'. It includes a table with columns: Stock Material, Original Quantity, Change, and Result. The table contains five rows of data. A red box highlights the '+' button in the top right corner of the table, which is used to add a new transaction.

| Stock Material                       | Original Quantity | Change | Result |
|--------------------------------------|-------------------|--------|--------|
| 2 Inch Nails (40 pack) [J_2IN_NAILS] | 1                 | +1     | 2      |
| Ball Pane Hammer [J_BALL_HAM]        | 1                 |        |        |
| Basic Interior Door [J_DOOR]         | 1                 |        |        |
| Floorboard Planks [J_PLANKS]         | 5                 |        |        |
| Floorboard Planks [J_PLANKS]         |                   | +1     | 1      |


Users can see any adjustments that have been made (Row 1 in picture above shows an edit to an existing line, Row 5 is a new transaction added)

Users can also now select a transaction line from the stock usage table to edit or click the '+' to add a new transaction. This is followed up by one of the corresponding popup screens.



### Edit - Stock Usage Transaction




---

|                   |  |
|-------------------|--|
| Stock Material    | 2 Inch Nails (40 pack)   |
| Original Quantity | 1  |
| Operative         | stuart.android   |
| Used Time         |  05/01/23 08:54 |
| New Quantity      | <input type="text" value="2"/>   |

---

### Create - Stock Usage Transaction

---

|                   |   |
|-------------------|---|
| Stock Material *  | <input type="text"/>                         |
| Original Quantity |   |
| Operative *       | <input type="text" value="stuart.android"/>  |
| Used Time *       |  <input type="text"/>                          |
| New Quantity *    | <input type="text"/>  |

---

After any changes are made and the job is saved stock transactions will be created to ensure all stock levels within the system are correct.

### JM-20405 JM Control Centre Saved Search Issue

When attempting to save searches in control centre with a specific sorting order set it would result in an error.

This has been corrected and the searches should now save correctly and preserve the sorting order as intended.

### **JM-20495 Cost Calculations spanning multiple days incorrect**

When entering jobs that span 2 days or more cost calculations would be incorrect. This is due to the way time is sectioned into each date so it can be calculated against the day rate, in this instance the activity code was not being passed to the second period.

This has now been corrected and cost calculations for work of all durations should correctly be calculated.

### **JM-20499 Unable to update gas safe number of operative**

For operatives that had a large number of Operative Communications records the query to return them could time out preventing the Operative screen from opening correctly.

The SQL for gathering the data shown on the Operative screen has been refactored to be more performant and avoid timeouts.

### **JM-20586 Child job line Photos not displaying in PDF Documents**

In instances where images were added to a child job line of a job, these images were not displayed when creating a summary PDF. This was due to the way data is collected only expecting images to be contained within top level job lines. This process has been extended to now include images from Child job lines.

Note: this extended function only applies to child job lines and not grandchild job lines etc.

### **JM-20595 Show no results if no jobs at same location as an asset.**

When selecting 'List all jobs at the same location in view jobs' from the asset menu, if no jobs are found the search would return all jobs instead of none. This has been corrected so that when there are no jobs to show, none are shown.

**JM-20786 Add some indexes to JM to improve the performance**

For customers with very large databases some queries were taking longer than expected due to a lack of indexing in some tables.  
Indexes have been added in the appropriate places.

**JM-20597 Performance - Improve resource search.**

When running a report to show all jobs for a resource the report could take an extended period to complete if there was a large number of jobs.  
The SQL processing this report has been modified and is now able to produce the resource reports significantly faster.

## Release advisory

This section contains post-upgrade advice, workarounds, and changes to system requirements. It also includes internal only comments.

# Update procedure

The product is upgraded in the standard way running the Job Manager installer.

# Interactivity / Database schema changes / API changes

## Database Schema Changes

There are a number of database schema changes at this release, mainly in the area of additional or modified tables for the stock system.

## API Changes

### Job Manager Web Service API

There is a **new** version of the API released with this product, and it's WSDL is named 9.1.0. It is located in the product at the following URL:

`http://<server>:<port>/<appname>/webservises/JobManagerV9_1_0.wsdl`

### Job Manager Notification Web Service API

The JM Notification webservice API is unchanged with this Version.

### Professional Services API



There are no new APIs for Professional Services at this release.

# Changes affecting application operation and support

Please see the details in the rest of this document.

## Contact us

At Advanced we strive to build intuitive products, but we also know that from time to time you may need a little extra help. That's why we offer useful support resources that you can dip in and out of when you need it. However, if you need help and support beyond the information provided here, the following are also available:

- Visit the [Support Portal](#) 
- Make a general enquiry on 03300 602 102
- Contact us via the [Advanced website](#) 



## More information

**w** [oneadvanced.com](http://oneadvanced.com)  
**t** 03300 602 102

Ditton Park, Riding Court Road, Datchet, SL3 9LL

Advanced Computer Software Group Limited is a company registered in England and Wales under company number 05965280, whose registered office is Ditton Park, Riding Court Road, Datchet, SL3 9LL. A full list of its trading subsidiaries is available at [www.oneadvanced.com/legal-privacy](http://www.oneadvanced.com/legal-privacy).