

Phone Mount Instructions

Packing List



Phone Mount



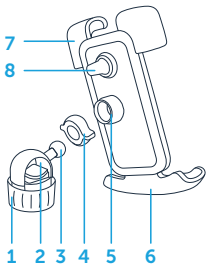
Silicon Pad



Fixed Clamp

Parts

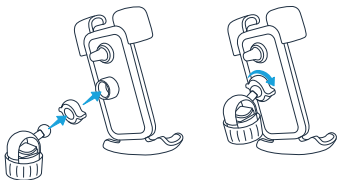
1. Lock Lever
2. Fixed Clamp
3. Joint Ball
4. Nut
5. Socket
6. Lower Arm
7. Upper Arm
8. Red Switch



Instructions

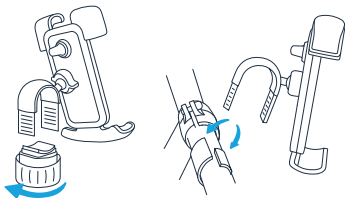
Step 1

Unscrew the nut and press the joint ball into the socket of the phone mount through the nut. Then, tighten the nut.



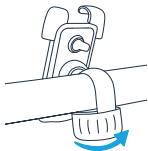
Step 2

Loosen the fixed clamp and mount it on the handlebars.



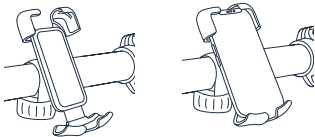
Step 3

Tighten the knob to lock the clip onto the handlebars.



Step 4

Make sure the red switch on the back is set to the UNLOCK side. Use your phone to push the lower arm of the phone mount down and set your phone in place.



Step 5

Click the red switch on the back to LOCK.

