



Relay Starter Repair/Replace

Date: 5/8/2019

This covers the following models (Read completely before performing service):

- **75537i, 100204, 100261, 100262, 100263, 100264, 100477 – Dual Fuel, Electric Start, or Wireless Remote Start**

**Specification, descriptions and illustrations are as accurate as known at the time of publication but are subject to change without notice.*

SAFETY PRECAUTIONS

- To reduce the risk of injury, user must read and understand the operator’s manual before using this product.
- DO NOT make any adjustments to the generator without first stopping the engine, turning all switches to the ‘OFF’ position, close fuel valve and disconnecting the spark plug wire.
- Burns from hot parts — let the engine cool for 30 minutes before touching hot parts.
- Injury from moving parts
- To reduce the possibility of fire or explosion, be careful when working around gasoline. Keep cigarettes, sparks and flames away from all fuel-related parts.

Tools Required

Tool	Size
Ratchet	3/8
Sockets	7mm, 8mm, 10mm,
Pliers	Box nose
Phillips Screwdriver	#2
Crescent Wrenches	7mm, 8mm
Empty Gas Container	Minimum 2 Gallon
Nitrile Gloves	
*3 – Containers or boxes for Parts	Small to Medium

*Containers or boxes will help organize/identify parts when reassembling.

Never store the machine with gasoline in the fuel tank in a confined area with improper ventilation. Gasoline fumes could reach open flames, sparks and cigarettes etc.

1. Ensure that the Fuel Valve, Battery and Start switches are all in the “OFF” positions.

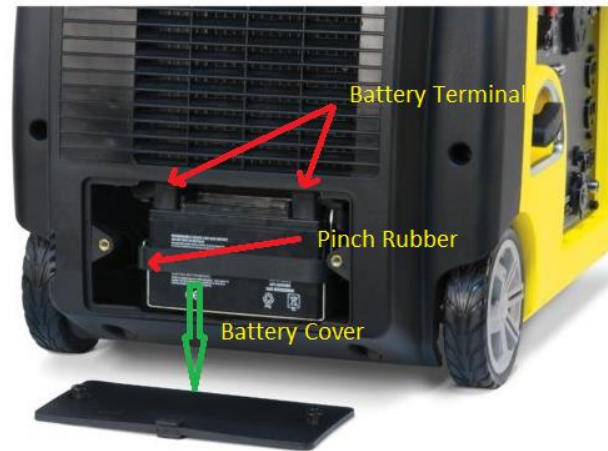
(panel illustrated is from model 75537i)



2. Remove the 2 Phillips screws from the battery maintenance cover and pull on the rubber tab to access the battery. Unclip the pinch rubber and slide the battery back to access cables.

Pull back on the protective boots to expose the battery bolts and using a 10mm wrench or socket remove the Black (-) negative cable first and then remove the Red (+) positive cable.

*Put all battery parts into a tray and label it “Battery Parts”



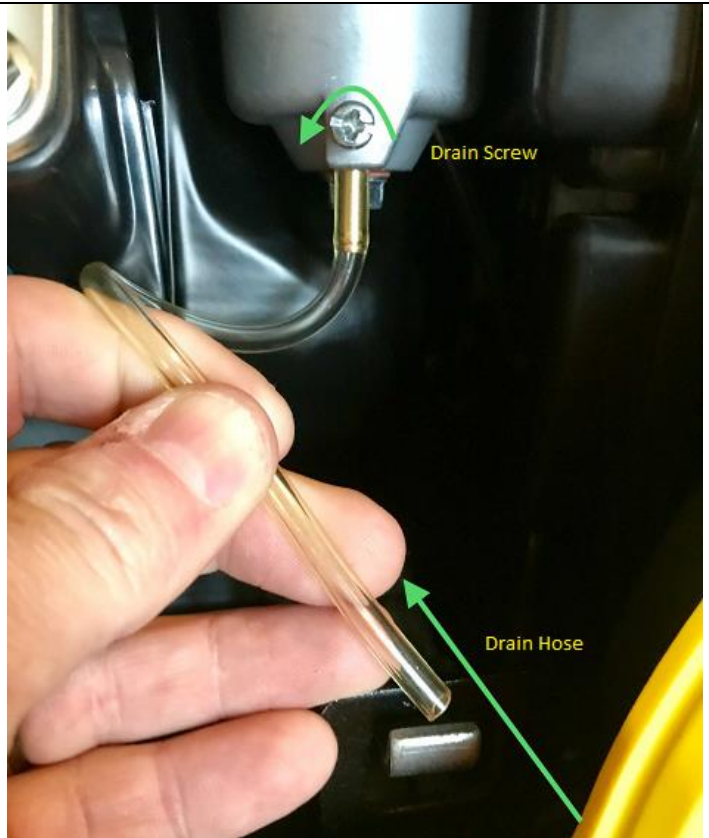
3. Remove the 2 Philips screws to remove access panel.



4. Gently pull the spark plug cap by firmly grasping the spark plug insulator at the base. Leave disconnected while working on unit.



5. Remove the clear or pink carburetor drain hose from the drain hole in the base of the enclosure and extend hose to exterior and direct the hose into your gasoline container. Turn main fuel valve to the "ON" ("gasoline" position for Dual Fuel) and with hose securely positioned into your gasoline can loosen drain screw only enough until you see gas flowing. After fuel tank is completely empty close drain screw, turn fuel valve "OFF" and insert drain hose back into the drain hole in the base of the enclosure.



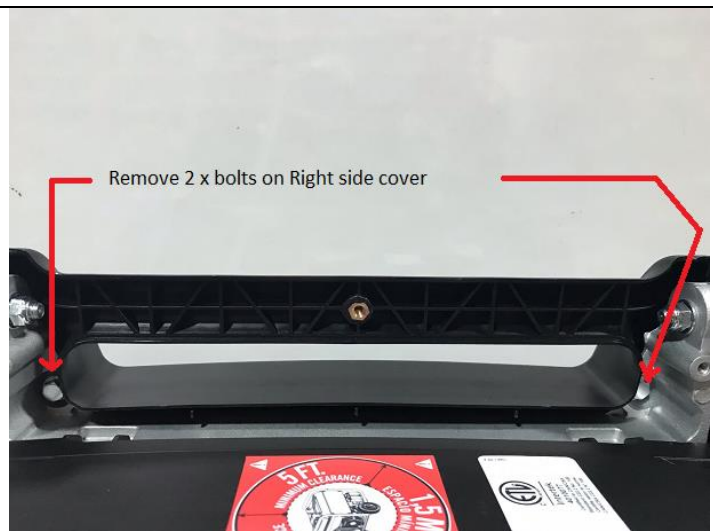
6. On the top handle on both sides, with a Phillips screwdriver, remove the 3 Phillips screws facing toward the gas cap.
7. Separate the handle along the center seam and pull downwards toward the top of the unit.

*Put all parts into a box and label it "Top/Handle Parts"



8. Located on the right side of the metal frame, remove the 2 bolts with a ratchet and 10mm socket.

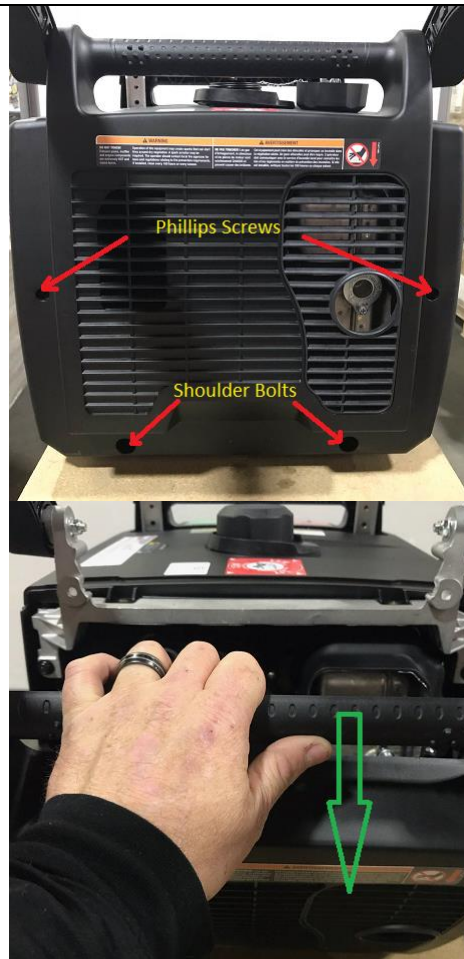
*Put all parts into a box and label it "Right Side Parts"



9. With a Phillips screwdriver, remove the 2 screws on each side and then with a ratchet with a 10mm socket, remove the 2 shoulder bolts at the bottom.

10. Remove the right-side cover (Handle side).

*Place hardware into tray already labeled "Right-Side Cover".



11. Unscrew gas cap and remove the Phillips screw. Place gas cap to the side.

*We suggest you thread the screw back into the cap so as not to misplace.



12. Remove the top cover by removing the 4 bolts (2 on each side) with 10mm socket.

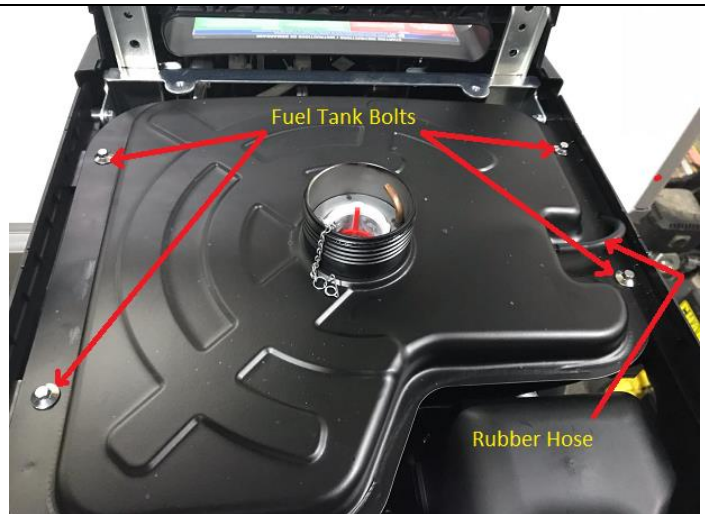
*Put all parts into box labeled "Top/Handel Parts"

13. Gently push up on the top cover, the top will unsnap out of place. Replace Gas cap on tank.

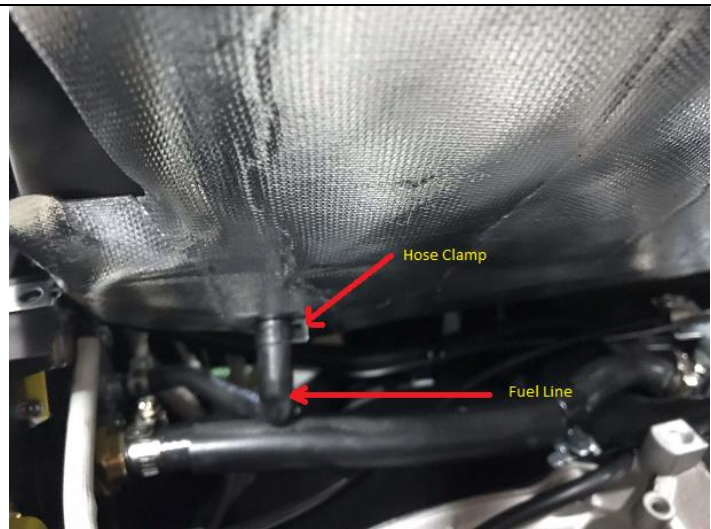


14. Remove the 4 fuel tank bolts with 7mm socket. Remove the rubber hose on the top by gently twisting and pulling with your fingers.

*Put all parts into a box labeled "Top/Handle Parts".



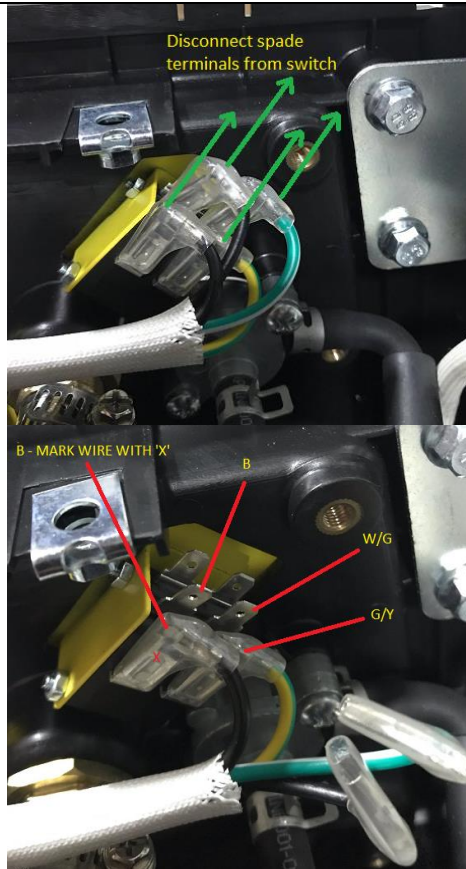
15. Gently lift-up on the gas tank and locate the hose clamp securing the fuel line in place. (Make sure the gas tank is empty if you haven't already done so in step #6 before removing fuel line). Using your pliers, pinch the clamp to expand it and gently wiggle the fuel line and clamp off. Once removed, (gas cap on tank), place tank in a safe location, away from cigarettes, sparks and flames.



16. Loosen the choke cable clamp screw and loosen the cable wire clamp using a 7mm and 8mm wrench. Remove choke cable from Pinch bolt and allow cable to lay loosely so we can remove front panel in later step.



17. If unit is a dual fuel, take note of which wires go to which terminals. We suggest you take a picture then disconnect the spade terminals. There are 6 connections and we only use 4 so we recommend you Take a Picture!



18. Front panel remove the (5) screws as indicated. Remove the center screw and pull off fuel knob and place to the side. DO NOT lose the small center screw.

*Put all parts into a box and label it "Front Panel"



19. FOR DUAL-FUEL MODEL ONLY – Remove the (5) front panel screws as indicated. Holding the fuel knob in the "OFF" position, remove the center screw and pull off fuel knob and place to the side. DO NOT lose the small center screw.

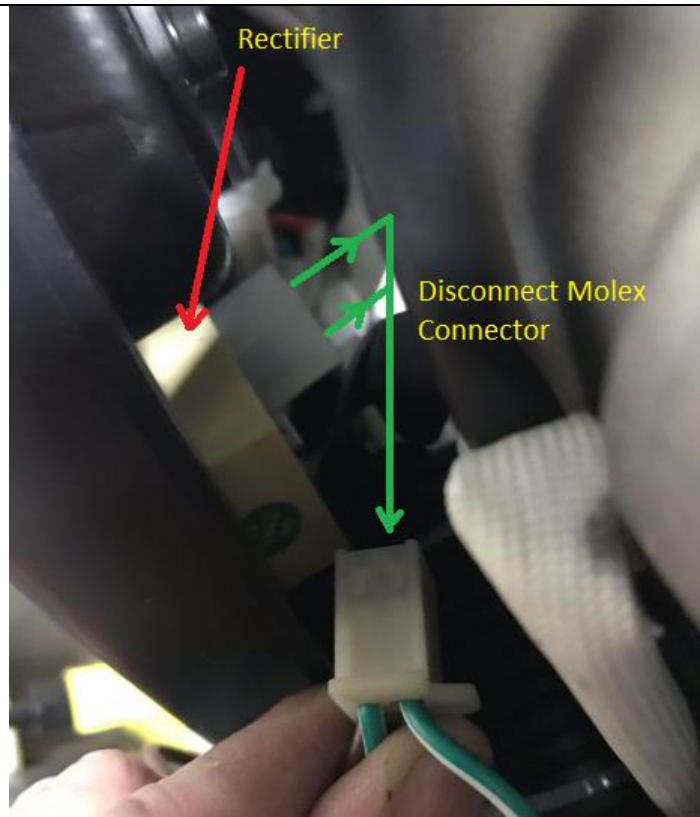
*Put all parts into a box and label it "Front Panel"



20. Once all screws are removed, gently pull out on the top right-hand corner, and swing out the panel slowly, DO NOT FORCE.

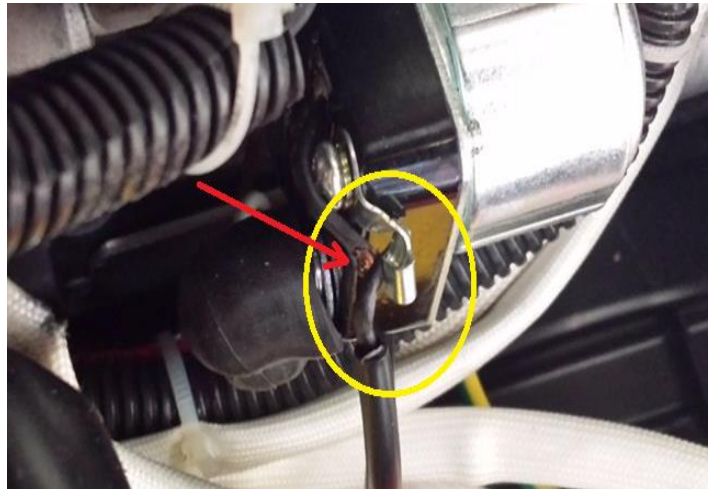


21. Located on the inside left front panel below the recoil cord, disconnect the Molex connector from the Rectifier. This will enable you to achieve more room to open the front panel.

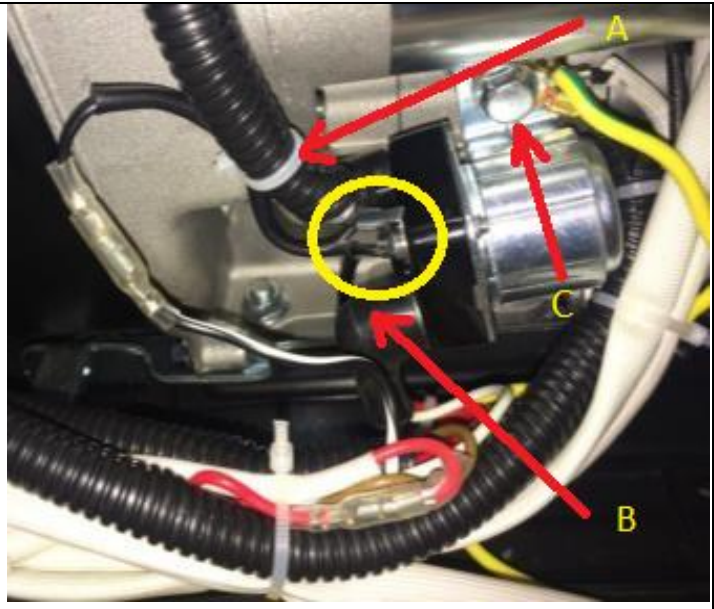


Exposed starting solenoid wire

22. Directly in front of you, against the engine block, you will see the starter solenoid and starter motor. Inspect black solenoid wire for damaged wire insulator as shown in picture. Use electric tape to cover the exposed copper wire, wrap firmly with at least 3 to 4 layers.



23. (A) Remove factory installed zip tie and install new zip tie after creating additional free play on black solenoid wire. (B) Loosen vibration support strap to rotate from outward to upward and re-tighten. (C) If replacing solenoid remove single bolt with 10mm socket disconnect wires and install new. Make sure cable routing is correct. Reverse steps for reassembly.



If you have any questions regarding these recommendations, please contact our technical department Monday-Friday from 8:30 AM-5:00 PM PST at 877-338-0999.

Champion Power Equipment,
Inc. 12039 Smith Ave.
Santa Fe Springs, CA 90670
Phone: 1-877-338-0999
Email: tech@championpowerequipment.com