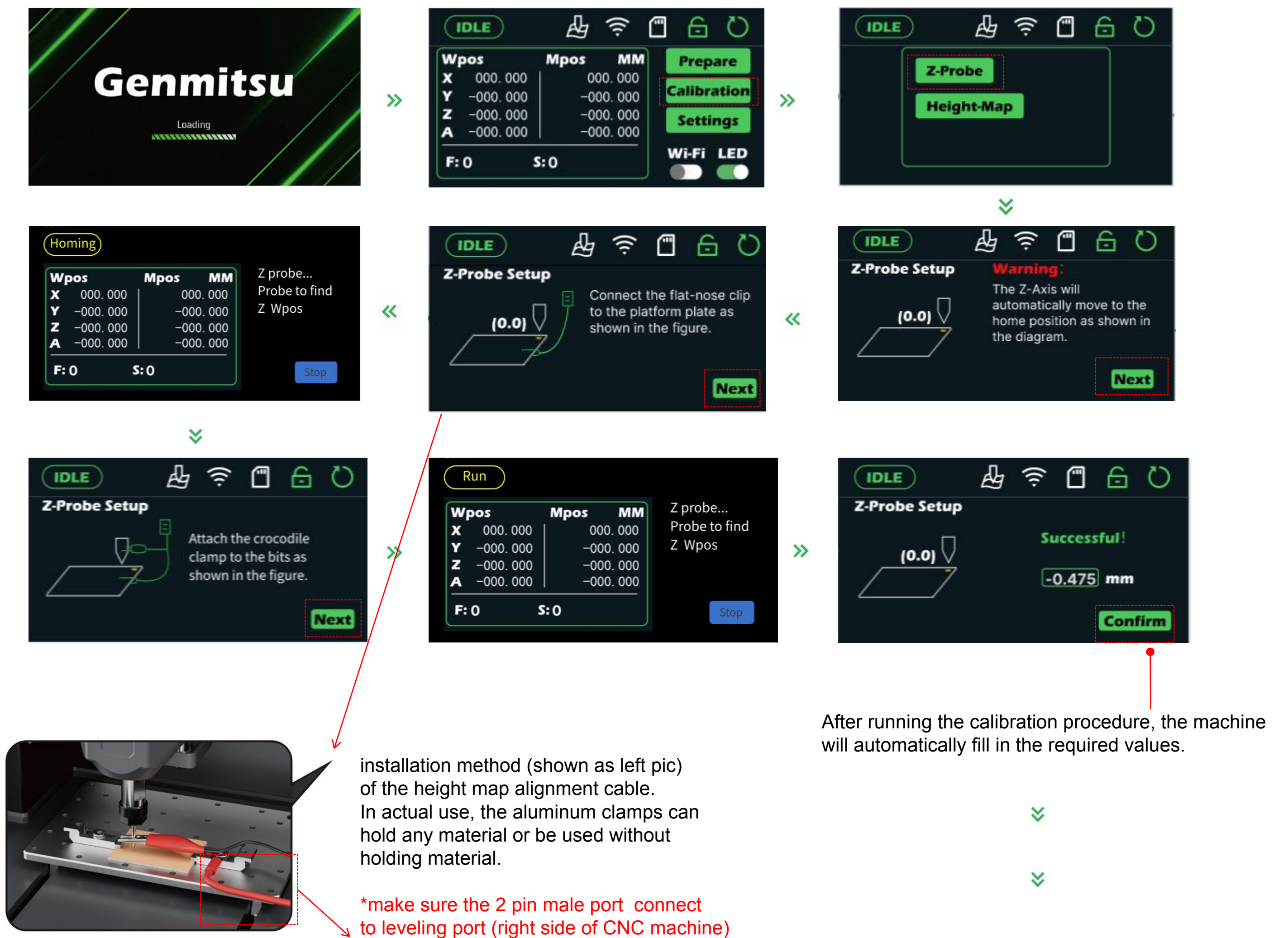


## Platform calibration

**TIP: After receiving the new machine and using it for a period of time, we recommend performing a calibration procedure.**



After running the calibration procedure, the machine will automatically fill in the required values.

Move to Settings->Grbl Setting , and check if the Probe\_Height\_Difference value match the result of the Z probe calibration

The height difference is for cnc grbl software to identify the height offset between touch probe's tip (located at the top-right platform circle) and the platform surface, help eliminating this offset while doing Z probe of Prepare Page

\*Perform this procedure while unboxing or if an obvious bias of Z-probe of Prepare Page is observed.