

HOW TO PAIR

- Turn the On/Off switch to 'On'. The lights will show for 2-3 seconds and then turn off. This is a battery saving feature, your case is still turned on.
- Make sure your iPad is placed in the Kai Skel case securely. Line up the iPad with the case and simply click into place.
- Push the connect button (FN + C) The Bluetooth Indicator light will start to flash.

iOS

1. On your iPad go to - Settings>Bluetooth
2. Turn Bluetooth On
3. Search for available devices
4. Choose 'Bluetooth Keyboard'
5. You are connected.



Note: Some devices will show a 4,6 or 8 digit pairing code on the screen. Simply type this code on your Kai Skel and hit 'Enter' to connect. If no code is displayed then you can also try 0000 or 1234.

CHARGING THE KEYBOARD



1. Before first use, we recommend charging the Kai Skel for a minimum of 6 hours
2. If the Battery Indicator turns red or if your keyboard will not turn on, it is time to charge the keyboard.
3. Connect the keyboard to a computer/wall outlet with the USB Charging Cable.
4. Your keyboard is now charging.
5. When the light turns off, your keyboard is fully charged. This usually takes around 2 hours (3 hours for iPad Pro 12.9)

BACKLIGHT

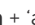

iPad Pro 12.9:

- use **Fn** + 'backlight button' [] to turn on and adjust brightness
- use '**Fn** + rgb button' [] to change colour

iPad Air 2/Pro 9.7:

- use 'backlight button' [] to turn on and adjust brightness
- use 'rgb button' [] to change colour

iPad Mini 4:

- **Fn** + 'arrow up/down' [] to adjust brightness
- **Fn** + 'arrow right' [] to change colour

TECHNICAL SPECS

iPad Pro 12.9:

Operating Distance:	<10 M
Charging Current:	1.0A/5VDC
Discharging Current:	<2.1A/5VDC
Standby Current:	<1.3 mA
Lithium Battery Capacity:	5600mAh
Continuous Working Time:	>100 Hours
Charging Time:	3 Hours
Key Life:	5,000,000 Strokes

iPad Air 2/Pro 9.7 & iPad Mini 4:

Operating Distance:	<10 M
Charging Current:	1.0A/5VDC
Discharging Current:	<2.1A/5VDC
Standby Current:	<1.3 mA
Lithium Battery Capacity:	2800mAh
Continuous Working Time:	>100 Hours
Charging Time:	3 Hours
Key Life:	5,000,000 Strokes

If you have any questions, drop us an email at hello@coopercases.com

For a digital version of this manual please visit the link below.

Para manual de español por favor visite el siguiente enlace. 日本語での操作方法等につきましては、下記のリンク先をご覧ください。

Pour manuel d'instruction français, S'il vous plaît visitez le lien ci-dessous.

Per manuale di istruzioni italiano, si prega di visitare il link sottostante.

Für die deutsche Gebrauchsanweisung folgen sie bitte dem Link unten.

t2c.co/cooperkai

COOPER KAI SKEL A1 INSTRUCTION MANUAL

CLAMSHELL CASE WITH BACKLIGHT
FOR APPLE IPADS



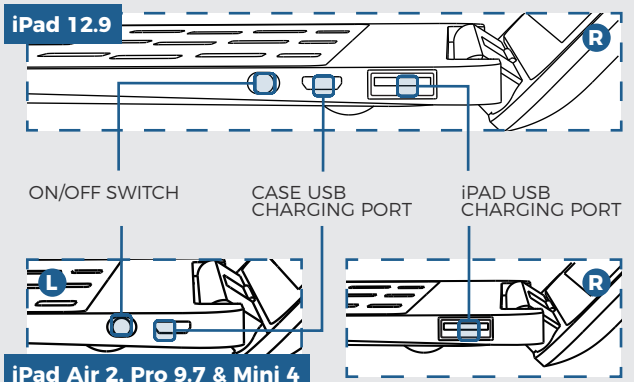
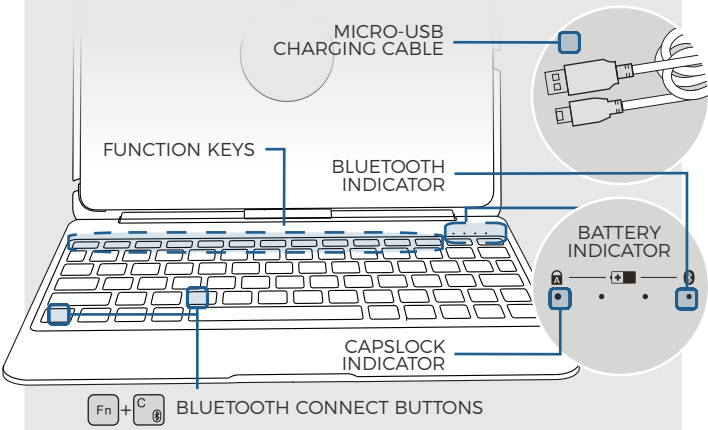
**COOPER
CASES** 

FEATURES

- Dedicated case for iPads
- QWERTY layout with regular resistance keys
- Aluminium alloy material provides sturdy and transportable case
- Up to 120 degree viewing angle
- 100 hours continuous working time
- Backlight with 7 different colours

To learn more about your product and it's full feature list, please visit us at www.coopercases.com

KNOW YOUR PRODUCT



FUNCTION KEYS

To use the function keys, simply press your desired key.

iPad 12.9

Icon	Function	Icon	Function
	Home		Play Previous Track
	Brightness Down		Play / Pause
	Brightness Up		Play Next Track
	Search		Mute
	Switch Language		Volume Down
	Virtual Keyboard		Volume Up
	Select All		Lock Screen
	Copy		Backlight On/Off
	Paste		Change Backlight Colour
	Cut		

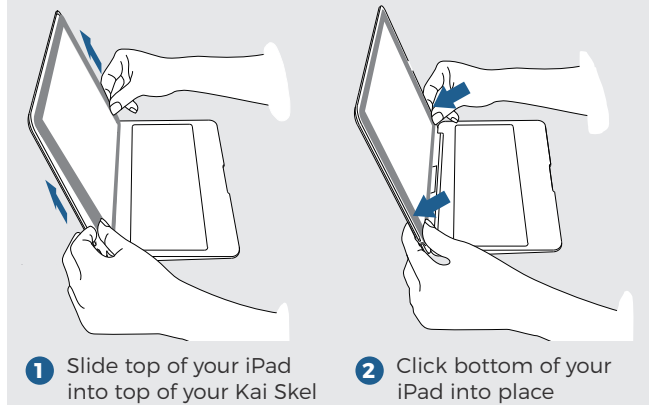
iPad Air 2 / Pro 9.7

Icon	Function	Icon	Function
	Home		Play Next Track
	Brightness Down		Mute
	Brightness Up		Volume Down
	Virtual Keyboard		Volume Up
	Search		Lock Screen
	Copy		Change Language
	Paste		Backlight On/Off
	Play Previous Track		Change Backlight Colour
	Play / Pause		

iPad Mini 4

Icon	Function	Icon	Function
	Home		Mute
	Virtual Keyboard		Volume Up
	Search		Volume Down (Open Camera)
	Copy		Lock Screen
	Paste		Change Language
	Play Previous Track		Brightness Up
	Play/Pause		Brightness Down
	Play Next Track		Change Colour

INSTALLING IPAD



REMOVING IPAD

