



COOPER TROOPER 2K

INSTRUCTION MANUAL

UNIVERSAL DROP PROOF RUGGED CASE

FEATURES

- Reinforced corners for ultimate drop protection
- Easy access to buttons, speakers and cameras
- Sturdy kick-stand with extendable arm for a variety of viewing angles
- Detachable shoulder strap with adjustable length
- Easy to install
- Easy to clean non-toxic ROHS compliant silicon material



KNOW YOUR PRODUCT



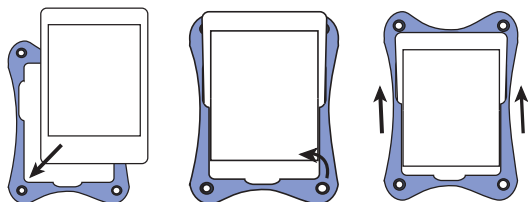
SHOULDER STRAP



Landscape Mode

Portrait Mode

HOW TO INSTALL



Slide bottom left corner of your tablet into Trooper.

Pull bottom right corner of Trooper over bottom right corner of your tablet

Stand up from bottom and pull top corners in place, 1 at a time.

Make sure tablet is inserted securely



Car Mode

TROUBLESHOOTING

Scan the below QR code to watch a video that will help you set up your Trooper 2K



DISCLAIMER: While all measures were taken to make this product universal, certain tablet models may have buttons/cameras covered by the case. If your device has any of these issues or If you have any questions, please send us an email with photographs showing how your device fits in the Trooper 2K. You can reach us at hello@coopercases.com

KICKSTAND



Pull clip to open kickstand.



Select preferred viewing angle.



Pull out extendable arm for portrait mode.



Gently push kickstand down to close.

For a digital version of this manual please visit the link below.

t2c.co/trooper2k