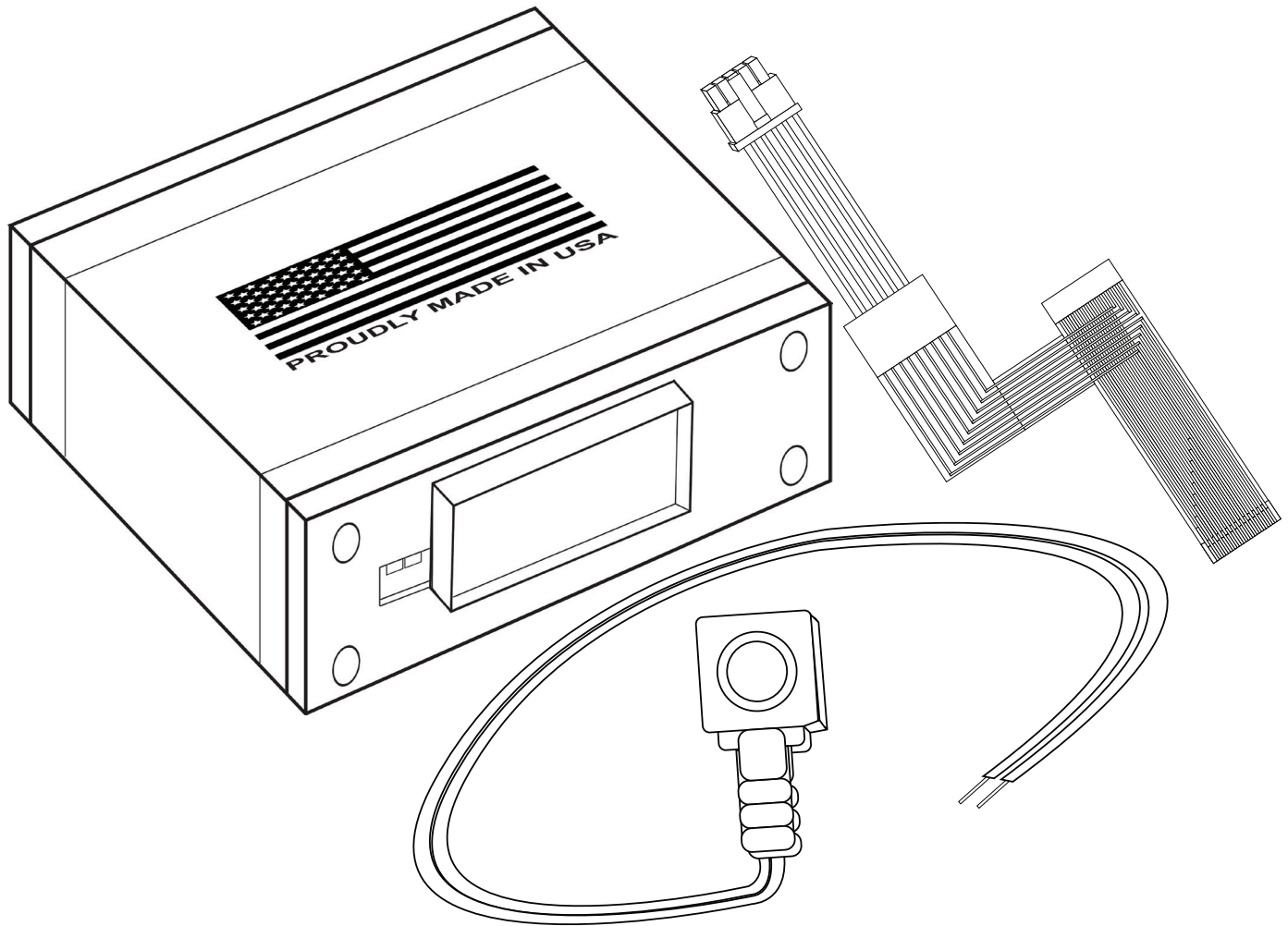


# Installation Manual (NAVRGB6.0-VI+GMTOUCH)

Cadillac Escalade 2005-2006



Manual Version: 1.0

DESIGNED + MANUFACTURED IN THE



**NOTICE:** We recommend having this installation performed by a certified technician.  
All product names, logos, brands, trademarks and registered trademarks are property of their respective owners.

# WELCOME

## IMPORTANT WARNING

Failure to follow these instructions carefully or not installing the interface as described could cause damage to the vehicle or safety systems on the vehicle. Any interference with specific safety systems could cause harm to other people as well.

This manual provides detailed instructions for this specific interface and vehicle type. Follow them as described. If the installer is not sure or does not feel comfortable, consult a competent technician who has the knowledge, experience, and understanding of how to complete the installation. Failure to do so will void your warranty on your interface and maybe on the vehicle.

# Precautions

## PLEASE READ BEFORE YOU START THE INSTALLATION

- Please study these instructions carefully before installing the interface.
- Protect the areas of the vehicle you will be working on before starting the disassembly.
- Use painters' tape or equivalent, and use protective blankets or covers on the front seats, interior panels, and center console.
- Do not disconnect the battery if the vehicle has an anti-theft coded radio unless you have the radio code.
- Write down radio code here if applicable \_\_\_\_\_.
- If installing an external push button switch, go over the location with the vehicle owner and make sure it is in an accessible place.
- To avoid accidental battery drainage, turn off the interior lights or remove the dome light fuse.
- Roll down a window to avoid being locked out of the car.
- Set Parking brake.
- Remove the negative battery cable if necessary.
- Always secure the interface with Velcro or double-sided tape to prevent rattling or damage.
- Make sure that the panels fit correctly.
- Use electrical tape on all your connections and splices, do not leave any exposed wires.
- Route all wires along with factory harnesses. Do not drill or make any unnecessary holes.
- Always use the help of a professional installer to prevent any damage to the vehicle or the interface.

# What's In The Box?

Interface  
(Part # NAVRGB6.0-VI)



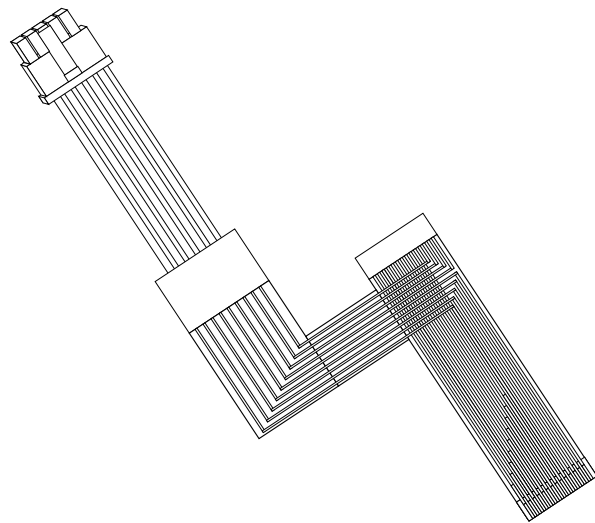
Push Button  
(Part # NT-PUSH-BTN)



Interface Harness  
(Part # NT-WHNT6)

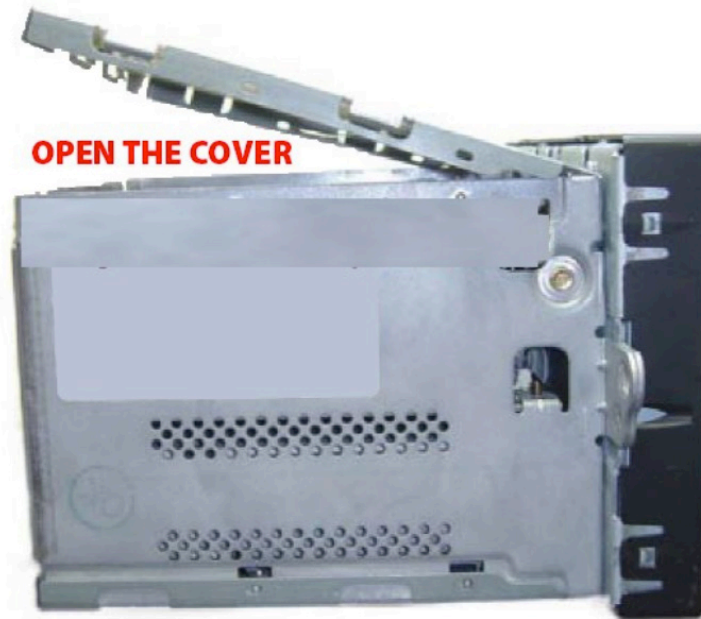


Vehicle Specific  
Plug and Play Harness  
(Part # NT-GMTOUCH)



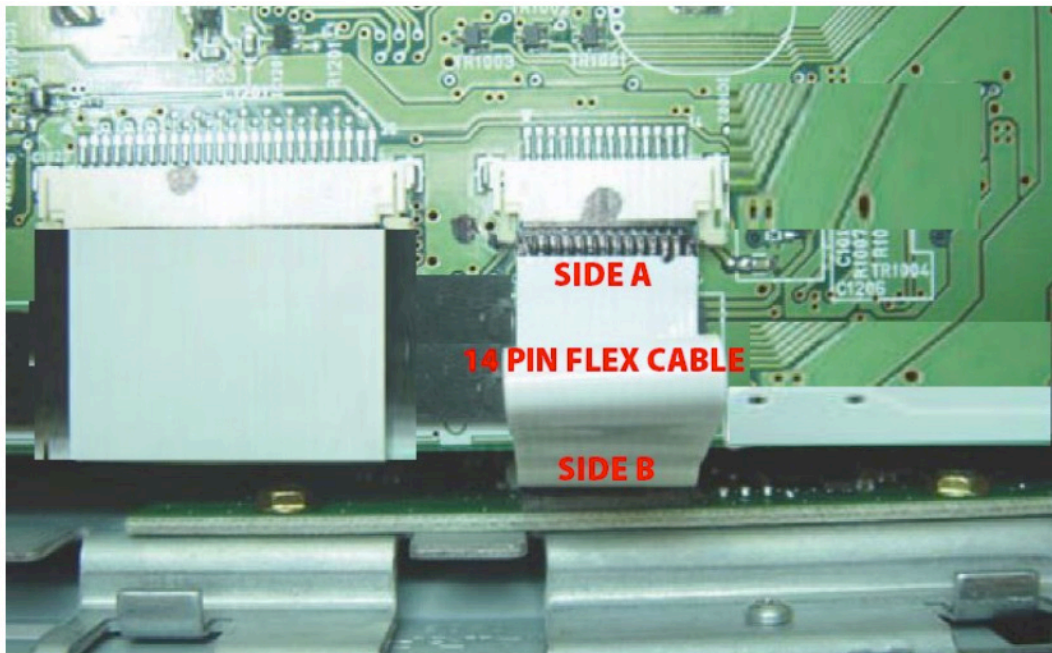
# Installation Instructions

**Step 1:** Remove the radio from the vehicle and put it on a flat surface. Turn the radio upside down and remove the radio bottom cover.



**Step 2:** On the side (A) of the 14 pin flex cable, pull the release tabs to release side (A) of the flex cable.

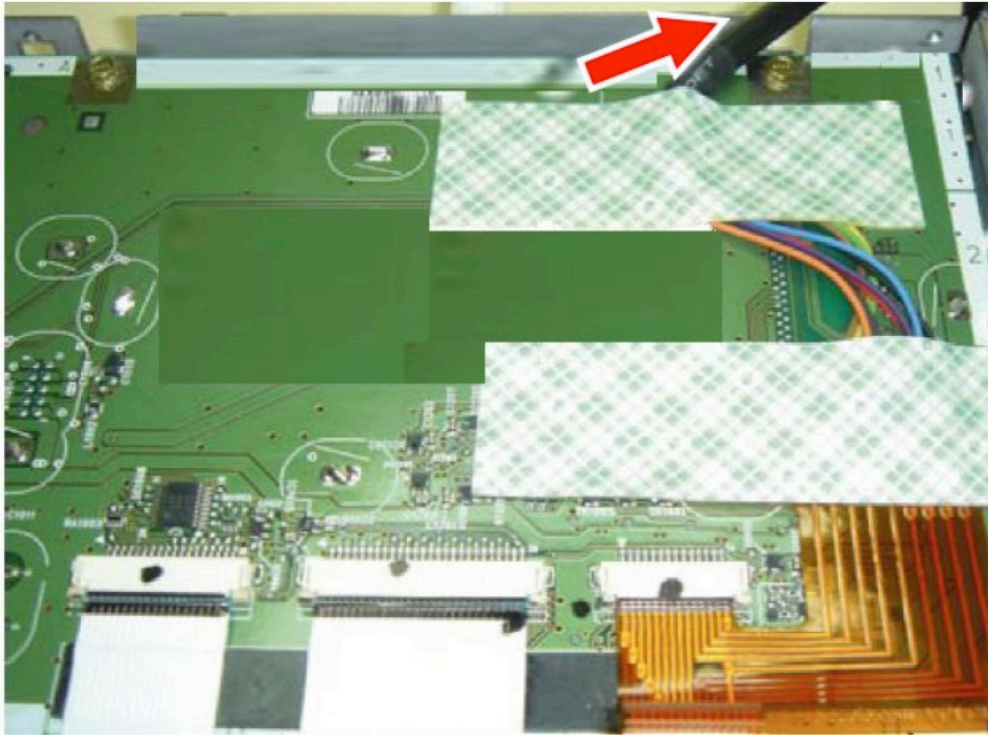
Remove 4 screws on each side of the main board to access side (B) of the flex cable. Side (B) of the flex cable is held in place by double sided tape. Carefully remove the flex cable from the double sided tape on the second board. The double sided tape will need to be reused or new piece can be applied. Pull the flex cable up while observing which direction the flex cable traces face.



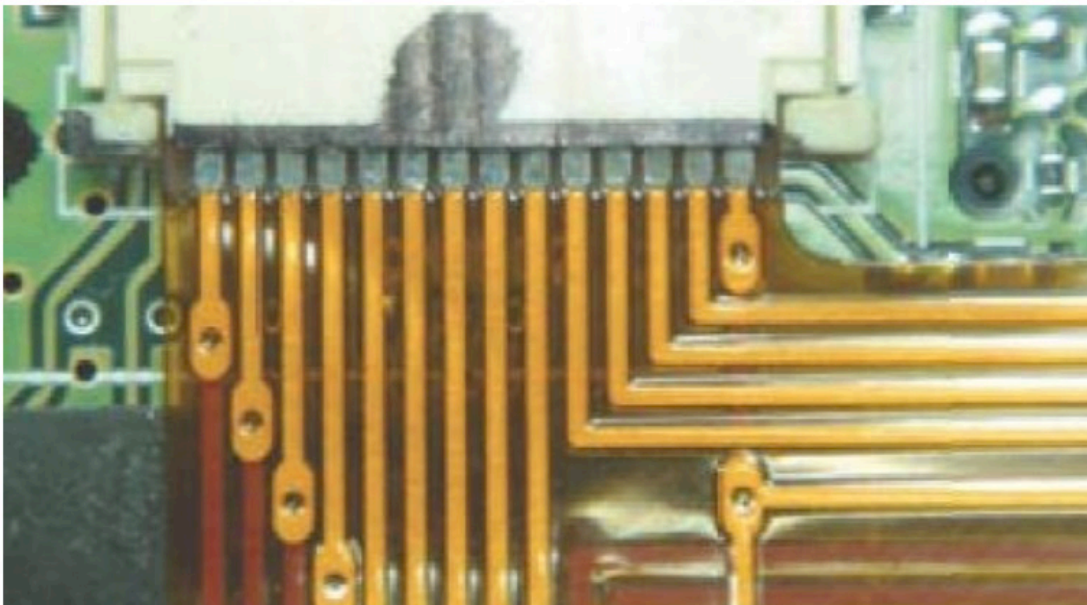


# Installation Instructions

**Step 5:** Apply double sided tape as shown in the picture below. Make sure the black insulated cable is about 1 inch inside of the radio and is seated in the opening by the screw.

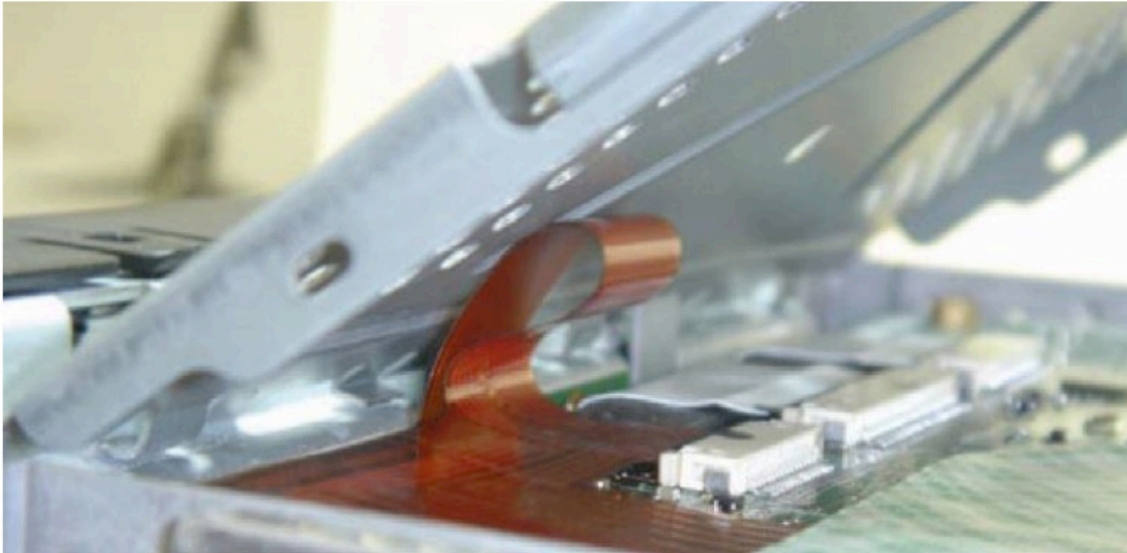


**Step 6:** Make sure that the flex cable is straight in the connector after it's taped down with double sided tape.



# Installation Instructions

**Step 7:** Install the cover of the radio. Let the flex cable fold over by itself when installing cover.  
Do not press the flex cable down by hand, doing so may crack the circuit traces.



**Step 8:** Close the cover all the way down, make sure not to damage the insulation of the cable. If required, modify metal of the opening to prevent wire pinching.



# Installation Instructions

**Step 9:** Connect both 10 pin connectors on the Interface harness and the Vehicle Specific Harness GMTOUCH together.

**Step 10:** Cut off the Red (+12 Volts ACC) and Black (Ground) wires off of the 6-pin plug on the interface harness.

**Step 11:** Connect the Red wire (+12 Volts ACC) to the Vehicle's factory accessory wire. (Ignition Switch)

**Step 12:** Connect the Black wire (Ground) to the Vehicle's factory ground. (Radio Ground)

**Step 13:** Connect the Orange wire (+12 Volt Reverse Input) to the Vehicle's factory reverse wire. (Rev. Light)

**Step 14:** Connect one wire of the push button to +12 Volt ACC power in the vehicle and the other wire to the white manual activation wire on the interface harness. (Not required for installations with reverse camera only)

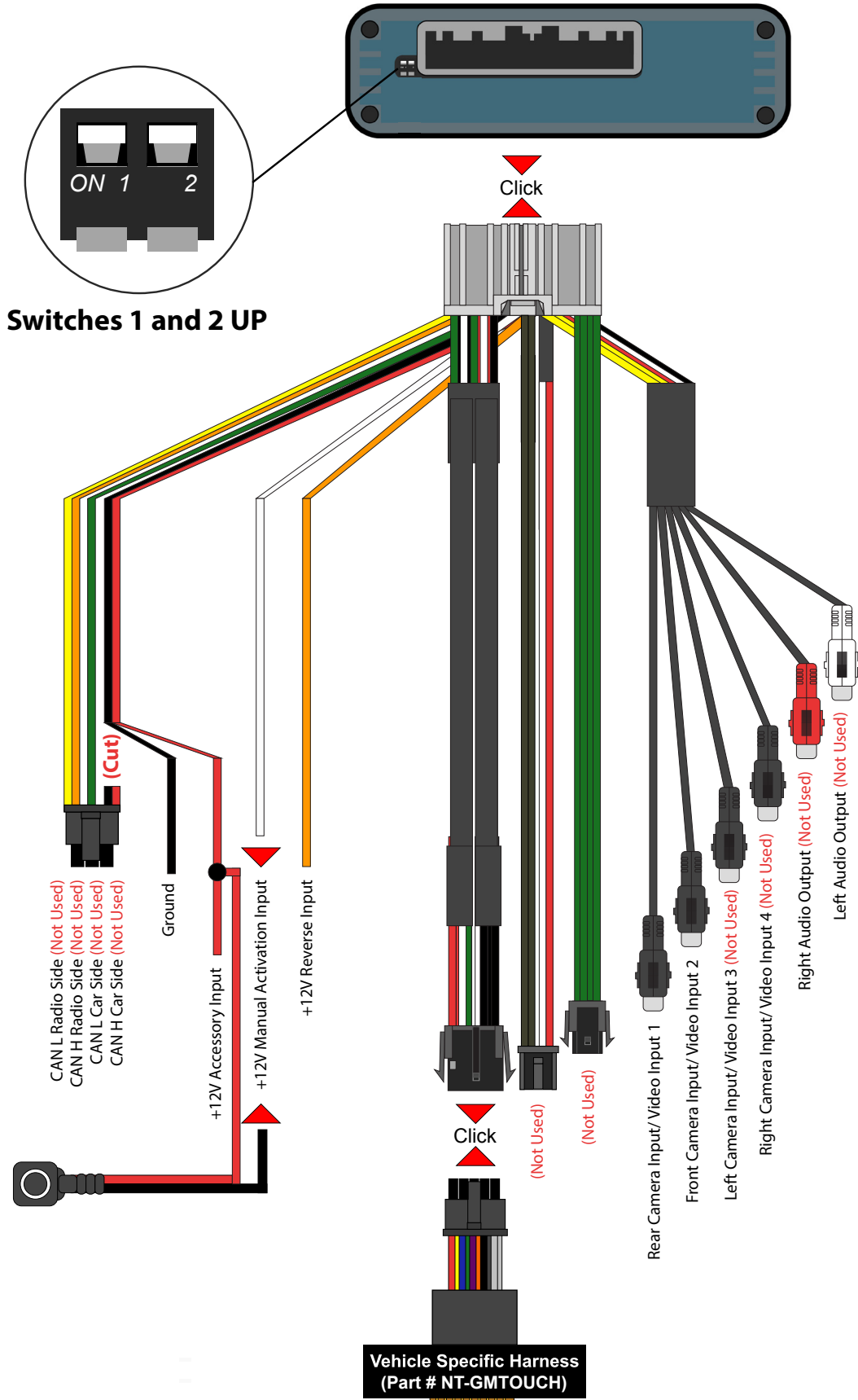
**Step 15:** Connect your aftermarket cameras/video inputs to Rear Camera Input/Video Input 1 and Front Camera Input/Video Input 2 on the interface harness.

**Step 16:** Make sure both dip switches on the interface are facing UP in the OFF Position. Plug the interface harness into the interface.

**See Next Page for Quick Connection Diagram >**



# Quick Connection Diagram



# Testing and Operation

**Step 1:** Turn on the ignition. A green LED will light up on the interface to confirm it has power.

**Step 2:** Press the push button once to turn on and display Video 1. Skip this step if only using reverse camera. (If no video source is connected you will see a “no signal” message)

**Step 3:** To return to the factory information screen press and hold the push button for 2 seconds

**Step 4:** To test the aftermarket reverse camera operation, press on the brake and set the vehicle in reverse. The reverse camera will display. if no camera is connected a “no camera connected” message will appear.

To Turn On parking lines, place vehicle in reverse and hold 12 volts to the white wire until the lines Turn On.  
To Turn Off parking lines, place vehicle in reverse and hold 12 volts to the white wire until the lines Turn Off.

# User Manual



**You do not need to use the push button if only a reverse camera was installed**

The reverse camera will automatically display when the vehicle is placed in Reverse. It will automatically Turn OFF when the vehicle is placed in any other gear and will display the factory screen.

**To View Video 2 (Front Camera if Installed)**

If no video source is connected you will see a "No Signal" message.

**Step 1:** Press the push button once to Turn ON the interface. This will display Video 1.

**Step 2:** Press the push button once to switch from Video 1 source to Video 2 source.

**Step 3:** Press and Hold the push button for 2 seconds to return to the factory screen.