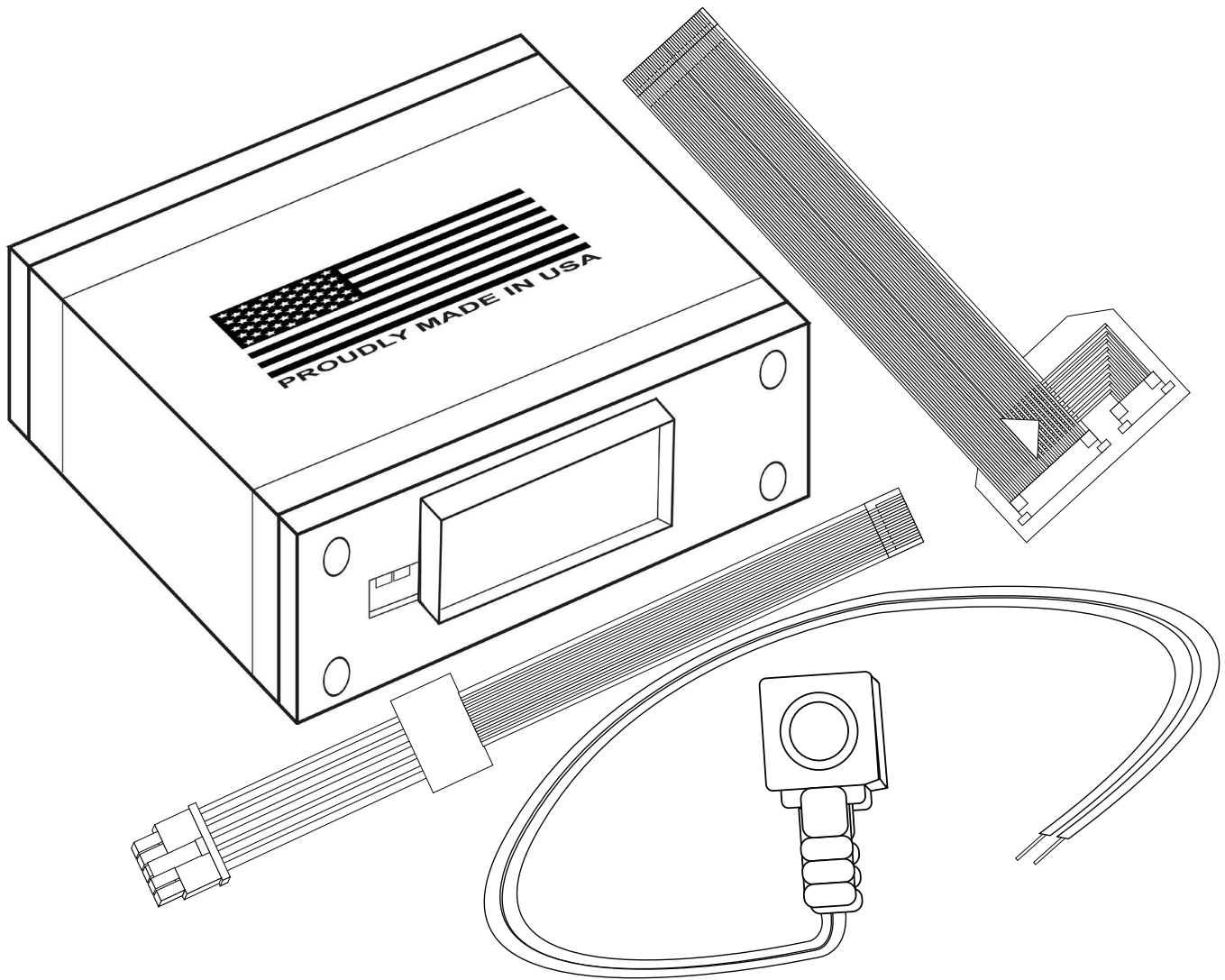


Installation Manual (NAVRGB6.0-VI+GMIRC2)

Chevrolet Equinox 2007-2009



Manual Version: 1.0

DESIGNED + MANUFACTURED IN THE



NOTICE: We recommend having this installation performed by a certified technician.
All product names, logos, brands, trademarks and registered trademarks are property of their respective owners.

WELCOME

IMPORTANT WARNING

Failure to follow these instructions carefully or not installing the interface as described could cause damage to the vehicle or safety systems on the vehicle. Any interference with specific safety systems could cause harm to other people as well.

This manual provides detailed instructions for this specific interface and vehicle type. Follow them as described. If the installer is not sure or does not feel comfortable, consult a competent technician who has the knowledge, experience, and understanding of how to complete the installation. Failure to do so will void your warranty on your interface and maybe on the vehicle.

Precautions

PLEASE READ BEFORE YOU START THE INSTALLATION

- Please study these instructions carefully before installing the interface.
- Protect the areas of the vehicle you will be working on before starting the disassembly.
- Use painters' tape or equivalent, and use protective blankets or covers on the front seats, interior panels, and center console.
- Do not disconnect the battery if the vehicle has an anti-theft coded radio unless you have the radio code.
- Write down radio code here if applicable _____.
- If installing an external push button switch, go over the location with the vehicle owner and make sure it is in an accessible place.
- To avoid accidental battery drainage, turn off the interior lights or remove the dome light fuse.
- Roll down a window to avoid being locked out of the car.
- Set Parking brake.
- Remove the negative battery cable if necessary.
- Always secure the interface with Velcro or double-sided tape to prevent rattling or damage.
- Make sure that the panels fit correctly.
- Use electrical tape on all your connections and splices, do not leave any exposed wires.
- Route all wires along with factory harnesses. Do not drill or make any unnecessary holes.
- Always use the help of a professional installer to prevent any damage to the vehicle or the interface.

What's In The Box?

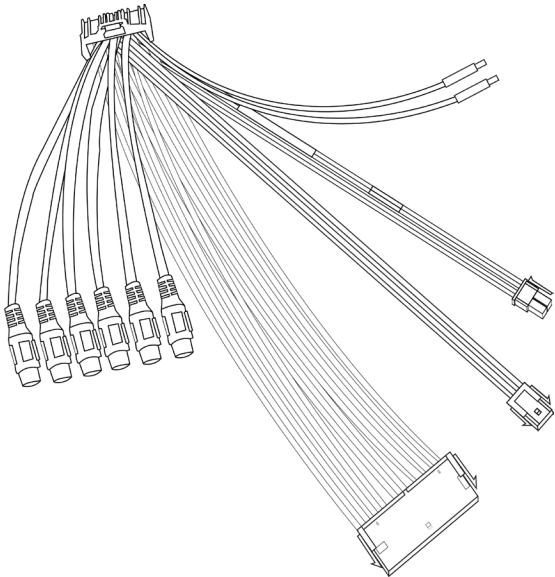
Interface
(Part # NAVRGB6.0-VI)



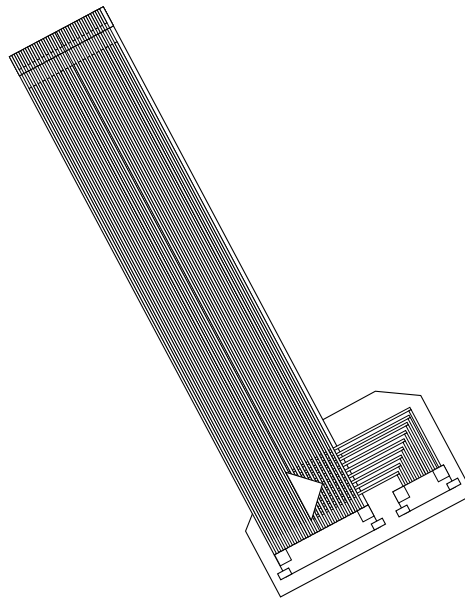
Push Button
(Part # NT-PUSH-BTN)



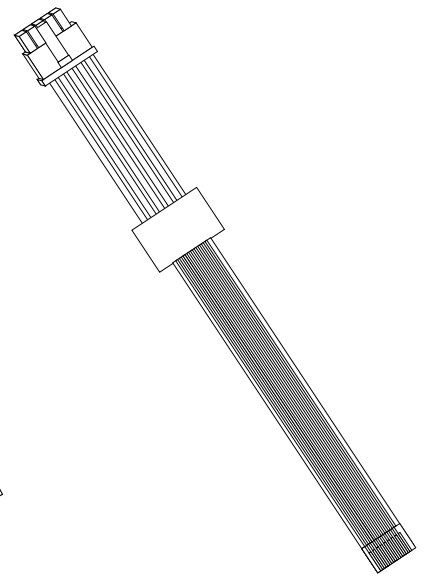
Interface Harness
(Part # NT-WHNT6)



Vehicle Specific
Plug and Play Harness
(Part # NT-GMIRC2)



Vehicle Specific
Plug and Play Harness
(Part # NT-LONG-RIB)

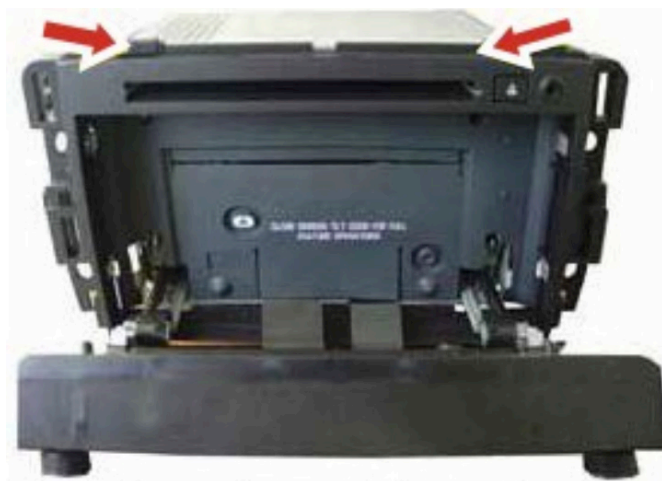


Installation Instructions

Step 1: After you disassemble the dashboard and before you pull the radio out, open the radio face. With the vehicle's ignition ON and the navigation unit ON, press and hold the CD eject button for 20 seconds until the display opens up.

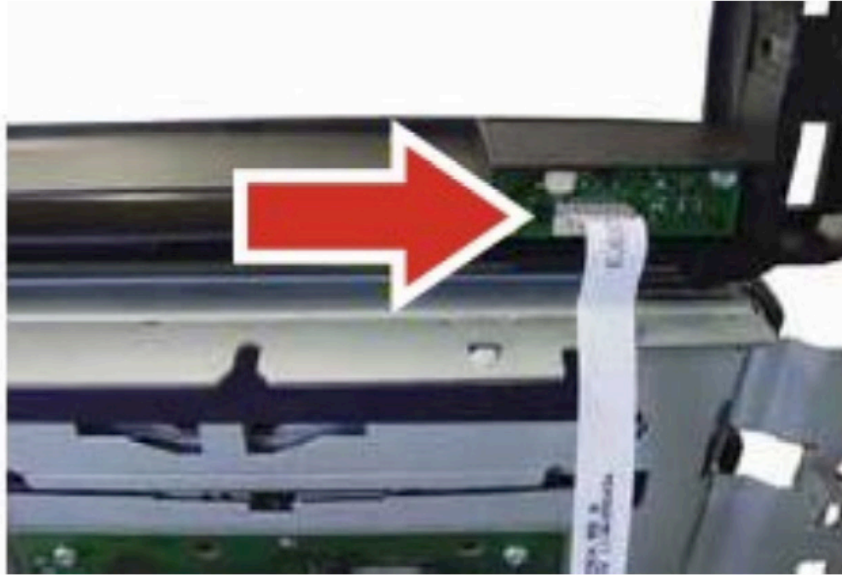


Step 2: With the display open, disconnect and remove the navigation unit from the vehicle. Place the navigation radio on a flat surface, workbench is a good place for this. Remove the plastic mounting trim from around the body of the navigation unit by releasing the four clips. You will have to disconnect the flex cable in the next step.



Installation Instructions

Step 3: Disconnect the flex ribbon cable located behind the eject button.

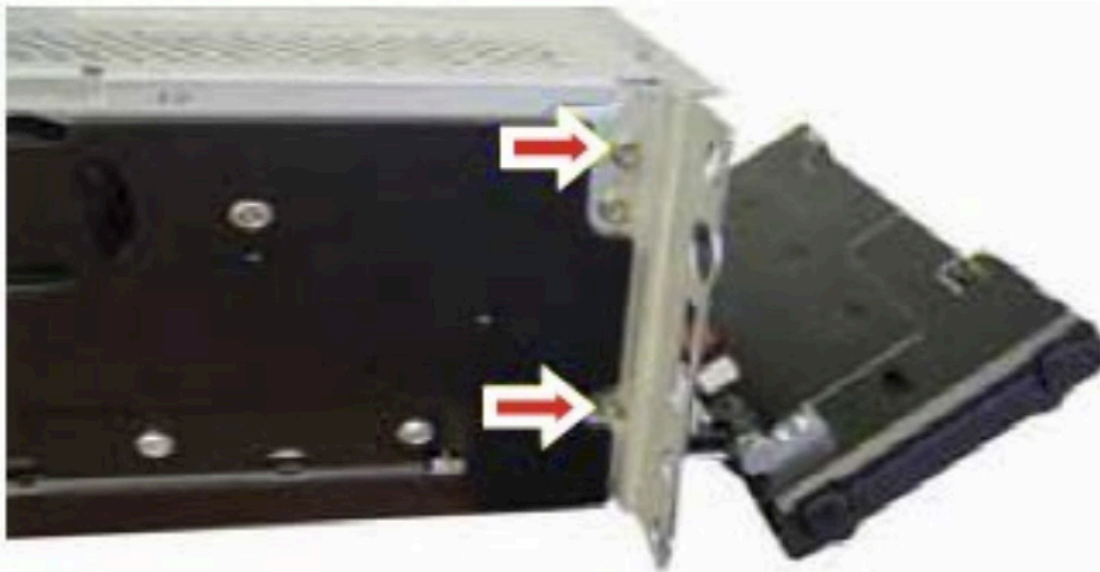


Step 4: Carefully remove the grey cover by gently peeling away from the body of the navigation unit, starting at the top corners.

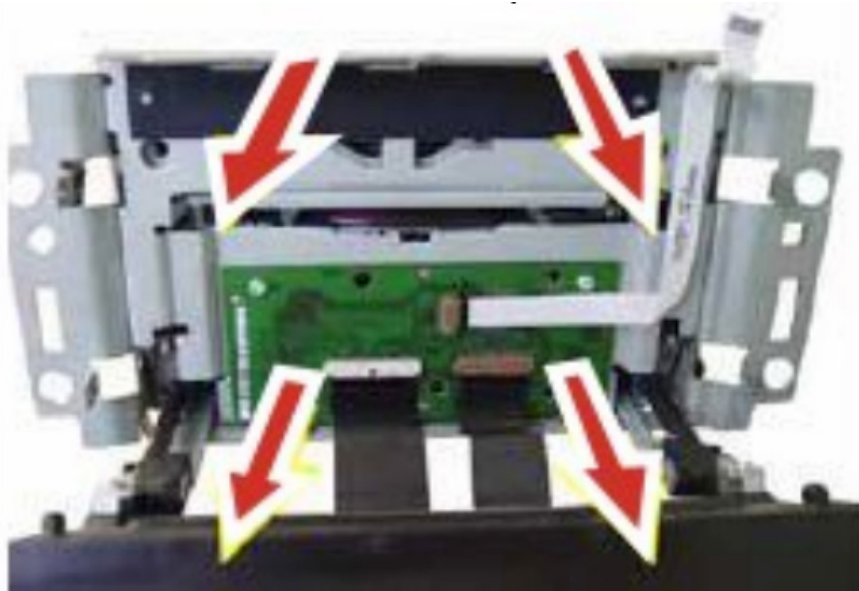


Installation Instructions

Step 5: Carefully remove the top and the bottom screws on both the left and right sides on the navigation radio. The center screw is not necessary to remove.

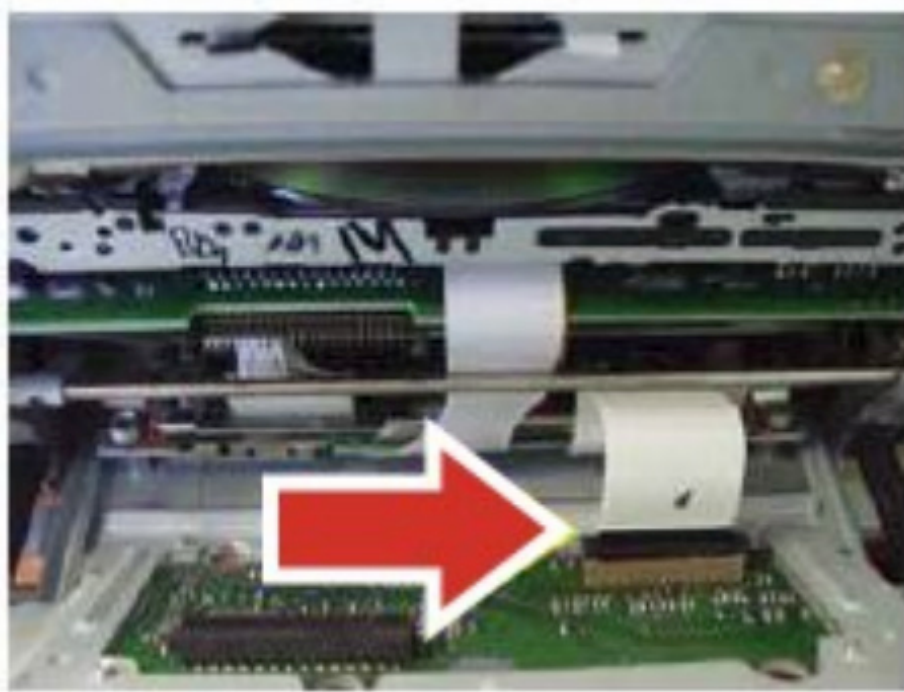


Step 6: Carefully remove the front metal printed circuit board assembly.

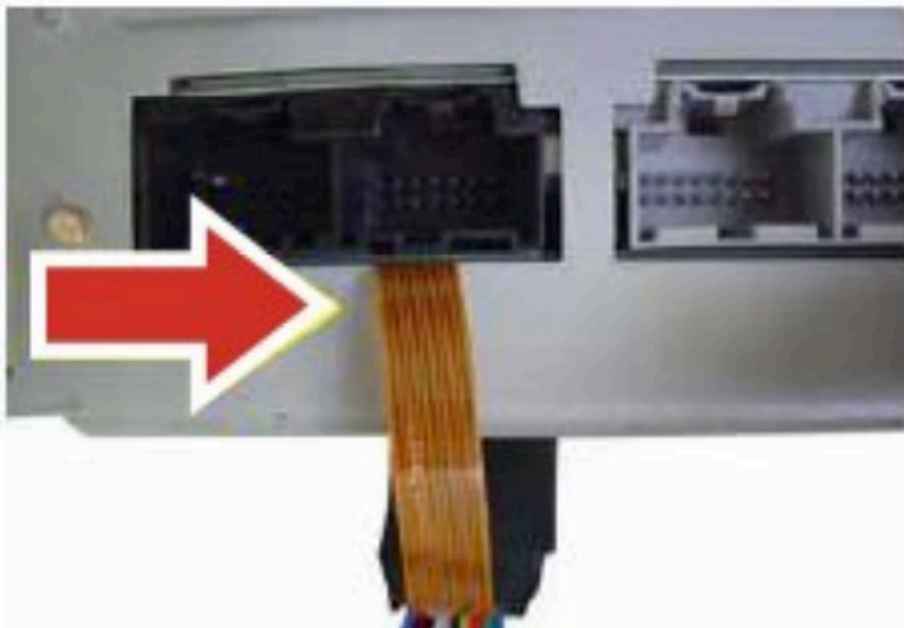


Installation Instructions

Step 7: Carefully disconnect the factory flex ribbon cable by lifting up on the black release tab on each side.

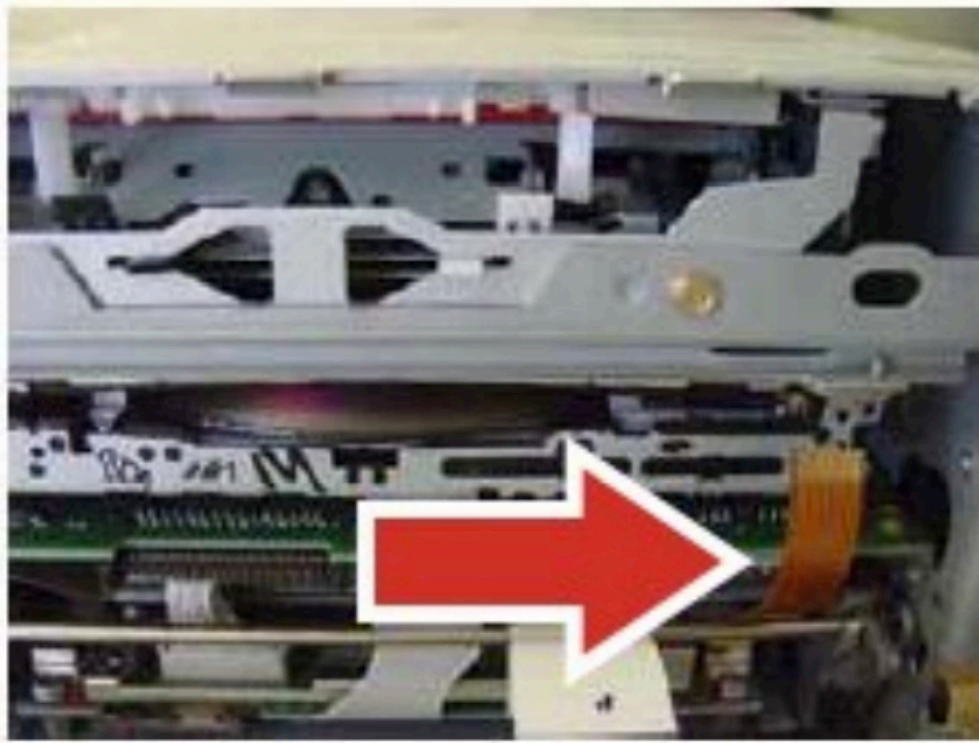


Step 8: Carefully route the supplied extension flex cable (Part # NT-LONG-RIB) under the black connectors through the back of the navigation unit towards the front opening with the silver contact traces facing down. Use the adhesive tape and secure the pad to the bottom of the navigation unit.

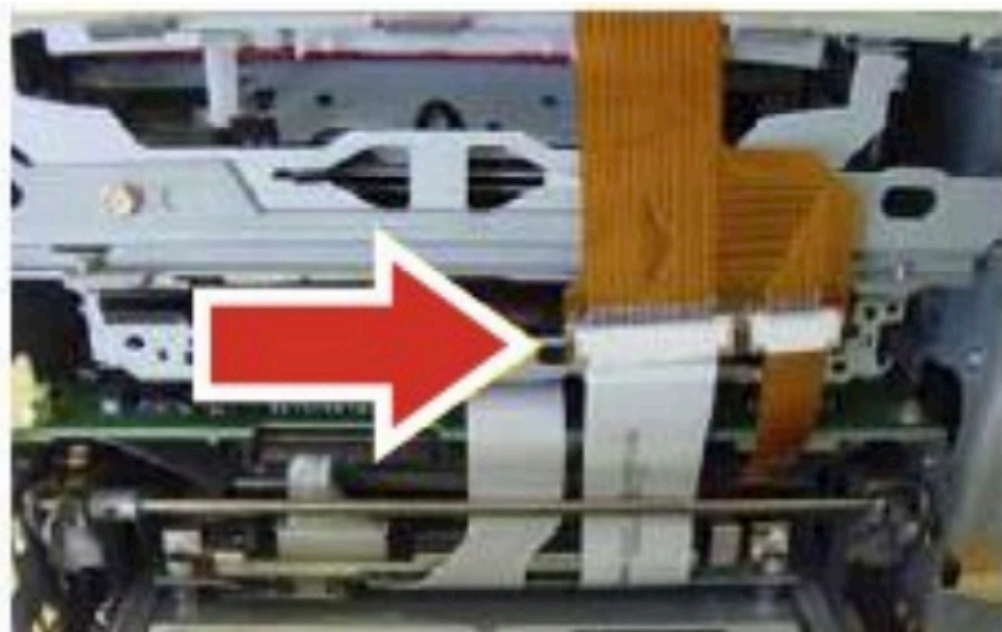


Installation Instructions

Step 9: Carefully route the supplied extension flex ribbon cable (Part # NT-LONG-RIB) and the factory white ribbon cable to exit the opening directly below the green printed circuit board and above the round metal bar.

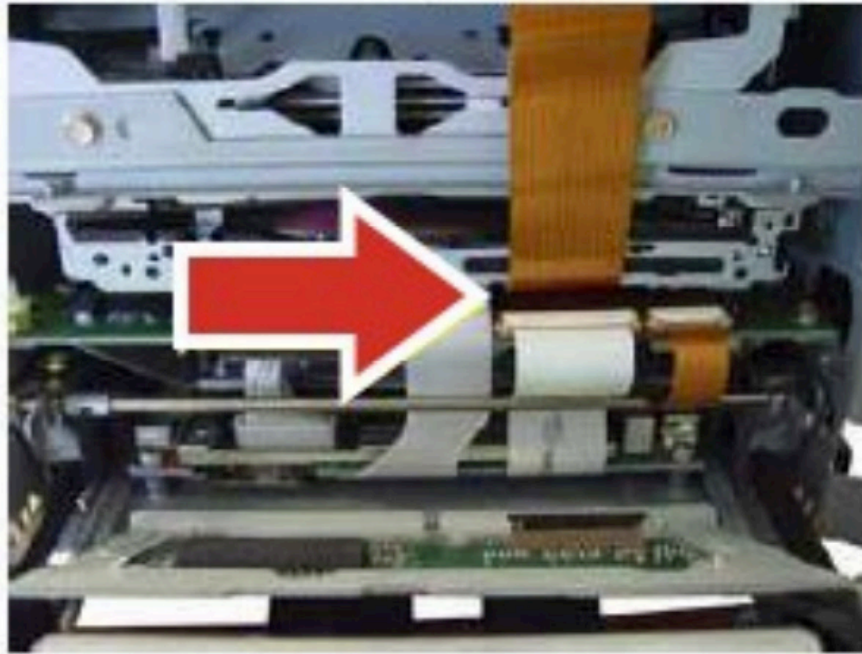


Step 10: Carefully connect the factory flex ribbon cable and the extension flex ribbon cable (Part # NT-LONG-RIB) to the main flex ribbon cable of (Part # NT-GMIRC2).

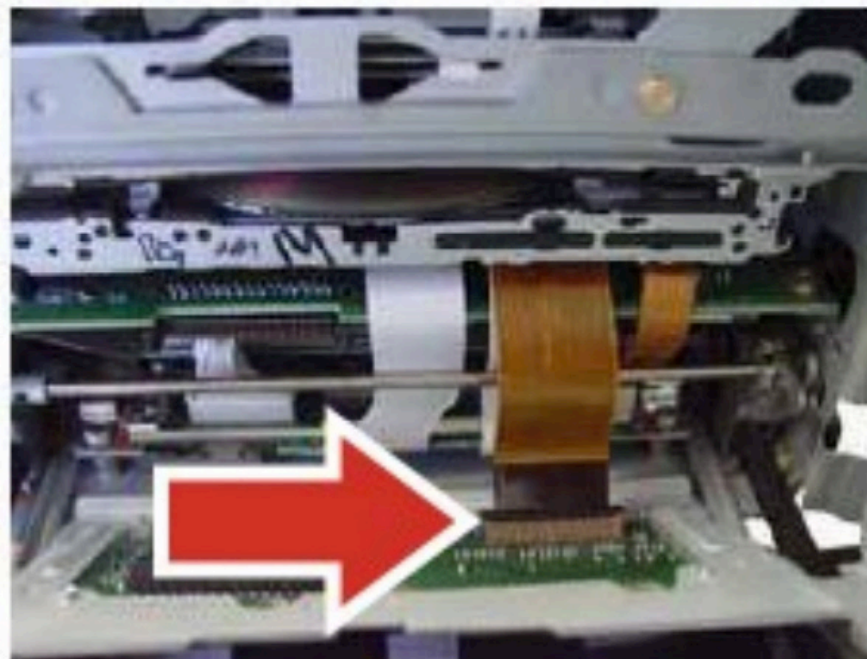


Installation Instructions

Step 11: Carefully fold and insert the flex ribbon cable directly below the radio DVD-ROM.



Step 12: Connect the flex ribbon cable to the metal green printed circuit board assembly with the silver traces facing down, close the black retaining tabs.



Installation Instructions

Step 13: Carefully reattach the front metal printed circuit board assembly.



Step 14: Assemble the navigation headunit in reverse order of steps, starting from step 5 down to step 1.

Step 15: Connect both 10 pin connectors on the Interface harness and the Vehicle Specific Harness LONG-RIB together.

Step 16: Cut off the Red (+12 Volts ACC) and Black (Ground) wires off of the 6-pin plug on the interface harness.

Step 17: Connect the Red wire (+12 Volts ACC) to the Vehicle's factory accessory wire. (Ignition Switch)

Step 18: Connect the Black wire (Ground) to the Vehicle's factory ground. (Radio Ground)

Step 19: Connect the Orange wire (+12 Volt Reverse Input) to the Vehicle's factory reverse wire. (Rev. Light)

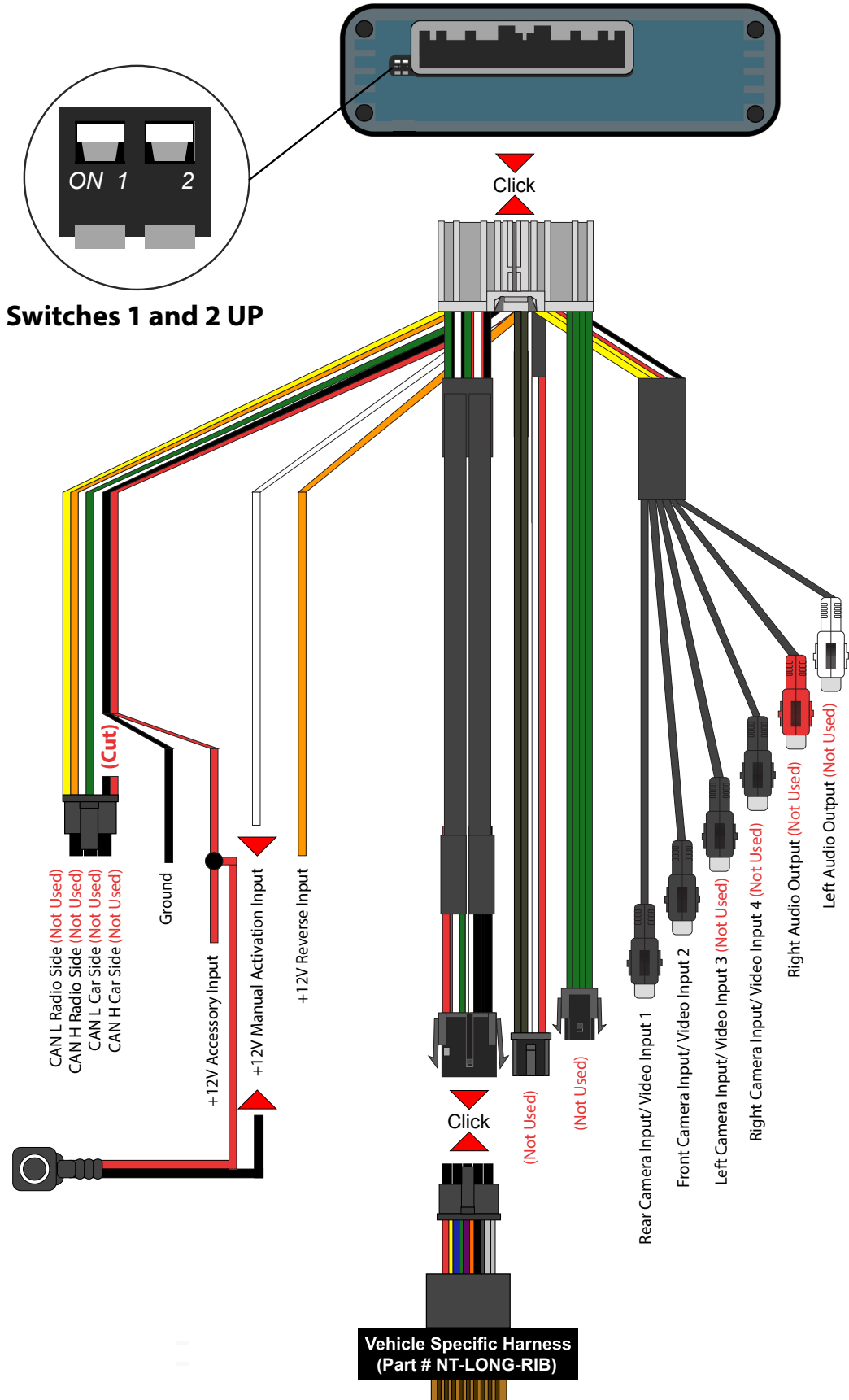
Step 20: Connect one wire of the push button to +12 Volt ACC power in the vehicle and the other wire to the white manual activation wire on the interface harness. (Not required for installations with reverse camera only)

Step 21: Connect your aftermarket cameras/video inputs to Rear Camera Input/Video Input 1 and Front Camera Input/Video Input 2 on the interface harness.

Step 22: Make sure both dip switches on the interface are facing UP in the OFF Position. Plug the interface harness into the interface.

See Next Page for Quick Connection Diagram >

Quick Connection Diagram



Testing and Operation

Step 1: Turn on the ignition. A green LED will light up on the interface to confirm it has power.

Step 2: Press the push button once to turn on and display Video 1. Skip this step if only using reverse camera. (If no video source is connected you will see a “no signal” message)

Step 3: To return to the factory information screen press and hold the push button for 2 seconds

Step 4: To test the aftermarket reverse camera operation, press on the brake and set the vehicle in reverse. The reverse camera will display. if no camera is connected a “no camera connected” message will appear.

To Turn On parking lines, place vehicle in reverse and hold 12 volts to the white wire until the lines Turn On.
To Turn Off parking lines, place vehicle in reverse and hold 12 volts to the white wire until the lines Turn Off.

User Manual



You do not need to use the push button if only a reverse camera was installed

The reverse camera will automatically display when the vehicle is placed in Reverse. It will automatically Turn OFF when the vehicle is placed in any other gear and will display the factory screen.

To View Video 2 (Front Camera if Installed)

If no video source is connected you will see a "No Signal" message.

Step 1: Press the push button once to Turn ON the interface. This will display Video 1.

Step 2: Press the push button once to switch from Video 1 source to Video 2 source.

Step 3: Press and Hold the push button for 2 seconds to return to the factory screen.