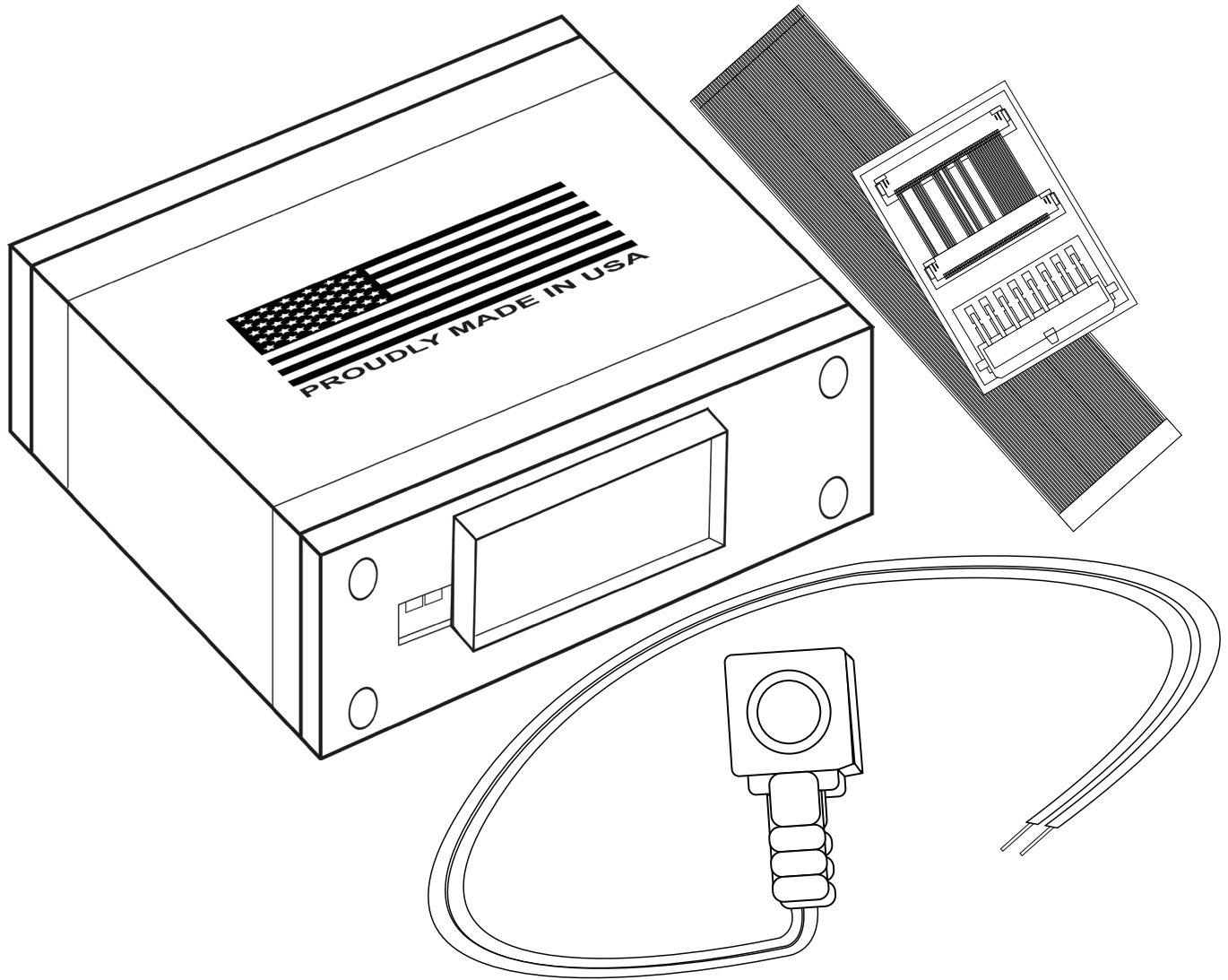


Installation Manual (NAVRGB6.0-VI+MBCIRC) Mercedes-Benz C-Class 2005-2007



Manual Version: 1.0

DESIGNED + MANUFACTURED IN THE



NOTICE: We recommend having this installation performed by a certified technician.
All product names, logos, brands, trademarks and registered trademarks are
property of their respective owners.

WELCOME

IMPORTANT WARNING

Failure to follow these instructions carefully or not installing the interface as described could cause damage to the vehicle or safety systems on the vehicle. Any interference with specific safety systems could cause harm to other people as well.

This manual provides detailed instructions for this specific interface and vehicle type. Follow them as described. If the installer is not sure or does not feel comfortable, consult a competent technician who has the knowledge, experience, and understanding of how to complete the installation. Failure to do so will void your warranty on your interface and maybe on the vehicle.

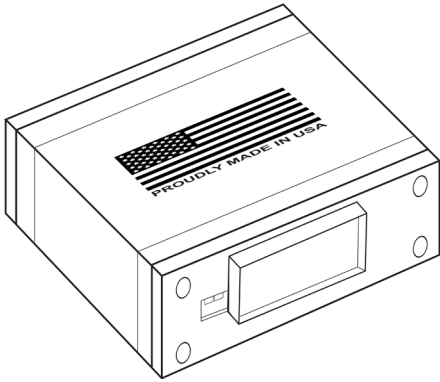
Precautions

PLEASE READ BEFORE YOU START THE INSTALLATION

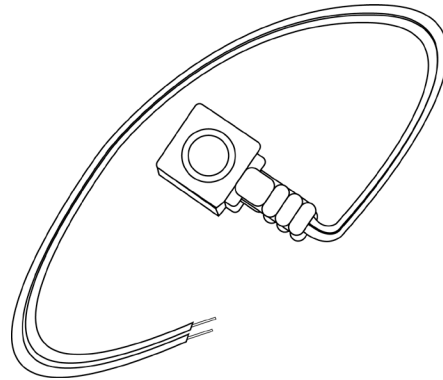
- Please study these instructions carefully before installing the interface.
- Protect the areas of the vehicle you will be working on before starting the disassembly.
- Use painters' tape or equivalent, and use protective blankets or covers on the front seats, interior panels, and center console.
- Do not disconnect the battery if the vehicle has an anti-theft coded radio unless you have the radio code.
- Write down radio code here if applicable _____.
- If installing an external push button switch, go over the location with the vehicle owner and make sure it is in an accessible place.
- To avoid accidental battery drainage, turn off the interior lights or remove the dome light fuse.
- Roll down a window to avoid being locked out of the car.
- Set Parking brake.
- Remove the negative battery cable if necessary.
- Always secure the interface with Velcro or double-sided tape to prevent rattling or damage.
- Make sure that the panels fit correctly.
- Use electrical tape on all your connections and splices, do not leave any exposed wires.
- Route all wires along with factory harnesses. Do not drill or make any unnecessary holes.
- Always use the help of a professional installer to prevent any damage to the vehicle or the interface.

What's In The Box?

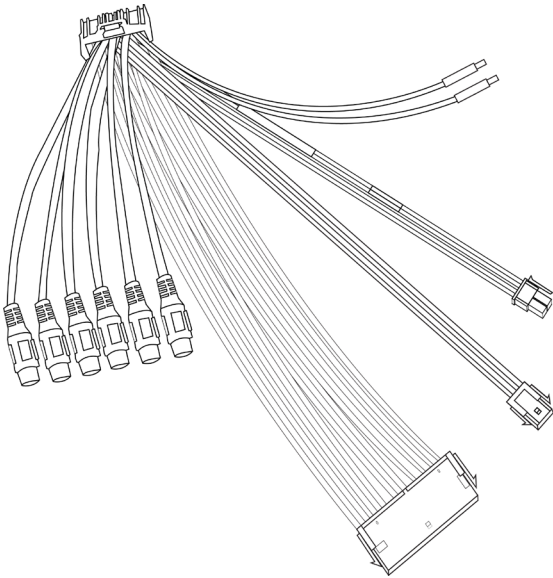
Interface
(Part # NAVRGB6.0-VI)



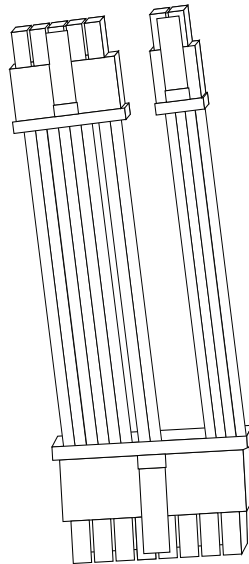
Push Button
(Part # NT-PUSH-BTN)



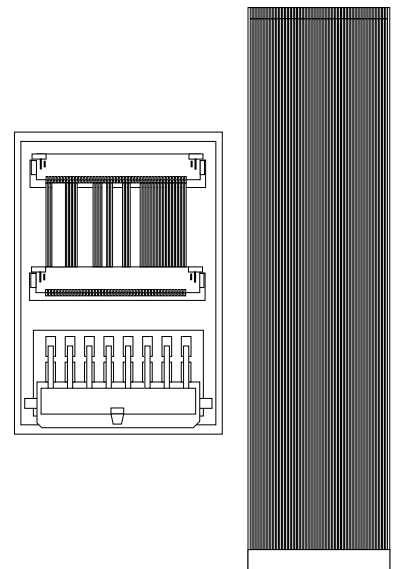
Interface Harness
(Part # NT-WHNT6)



Vehicle Specific
Plug and Play Harness
(Part # NT-PEREXODNIC)



Vehicle Specific
Plug and Play Harness
(Part # NT-MBCIRC-BOARD-KIT)

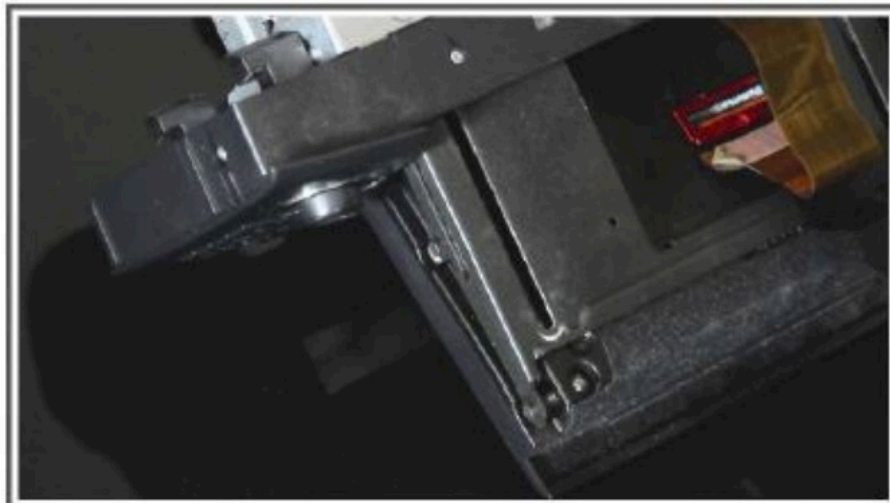


Installation Instructions

Step 1: In order to prepare the Mercedes-Benz radio for the installation, open the front cover by pressing the EJECT button. When the cover is open, disconnect the radio main QuadLock connector and turn the radio upside down on the flat surface.

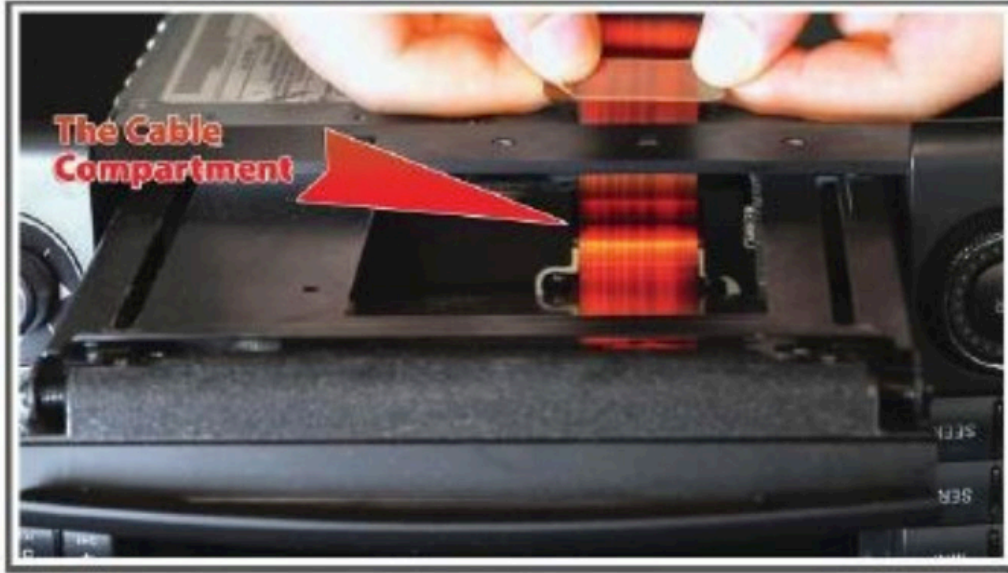


Step 2: Carefully pull out original ribbon cable from its compartment, remove the plastic cover (marked red) and disconnect the cable from screen. While disconnecting the cable, do not apply any force on the locks. They are very easy to break. Be careful, and do not use sharp objects to disconnect the cable.

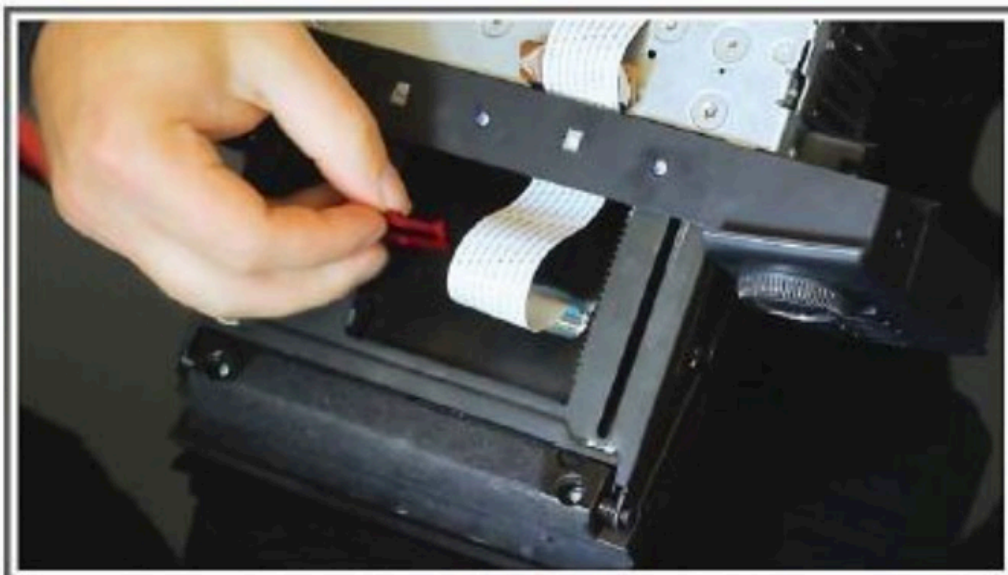


Installation Instructions

Step 3: Put the disconnected ribbon cable back into the compartment including the plastic arrow shaped stopper on top of the flex cable, run the loose end through the slot on top, between metal radio case and plastic trim shroud. Take precautions against piercing or scratching the cable. Do not use sharp objects for this operation

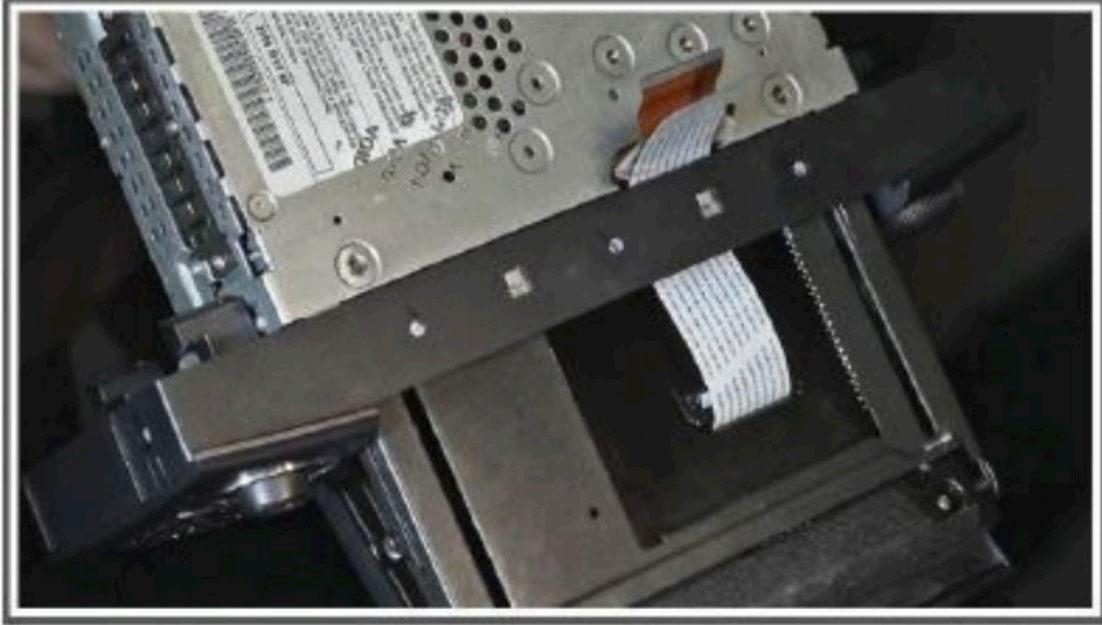


Step 4: Run the supplied ribbon cable through the same slot as the original cable. Connect supplied flex ribbon cable to the screen, and close the locks. Carefully reinstall the plastic cover (marked red). Do not use sharp objects and do not apply force on the locks.

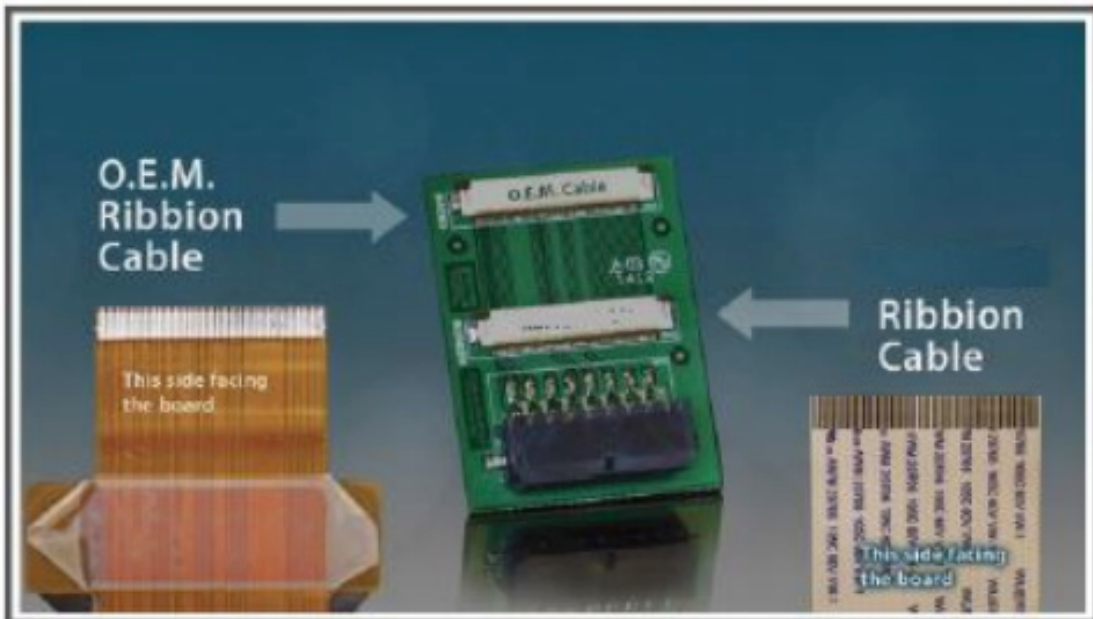


Installation Instructions

Step 5: Place the supplied flex ribbon cable into the compartment behind the slot, where the original cable is located. Leave sufficient length of both supplied and original cables for connecting them to the supplied board. Make sure there is at least 1.5" on both cables loose. Do not use sharp objects during the procedure.



Step 6: Connect the loose ends of ribbon cables to the board as shown. Make sure to connect the plugs to the appropriate slot and to insert them in the right direction. Place the excess of the ribbon cables in same compartment as original cable. Make sure there is long enough stripe left for attaching the board to the radio.



Installation Instructions

Step 7: Remove the cover from adhesive tape on the back of the board and attach the board to the back of the radio in the location shown below. You may cover the board and the cables with duct tape, however it is an optional precaution. Manually close the radio front panel. Don't force it, if the panel refuses to close – check if any of the cables preventing it from doing so.



PLEASE NOTE: Camera and DVD work only in an AUDIO MODE



Installation Instructions

Step 8: Plug the 16 pin connector on the supplied Vehicle Specific Harness (Part # NT-PEREXODNIC) into the supplied board (Part # NT-MBCIRC-BOARD-KIT).

Step 9: Connect the 10 pin connector on Vehicle Specific Harness (Part # NT-PEREXODNIC) to the 10 pin connector on the supplied Interface harness (Part # NT-WHNT6).

Step 10: Connect the 4 pin connector on Vehicle Specific Harness (Part # NT-PEREXODNIC) to the 4 pin connector on the supplied interface harness (Part # NT-WHNT6).

Step 11: Cut off the Red (+12 Volts ACC) and Black (Ground) wires off of the 6-pin plug on the interface harness.

Step 12: Connect the Red wire (+12 Volts ACC) to the Vehicle's factory accessory wire. (Fuse Box)

Step 13: Connect the Black wire (Ground) to the Vehicle's factory ground. (Radio Ground)

Step 14: Connect the Orange wire (+12 Volt Reverse Input) to the Vehicle's factory reverse wire. (Rev. Light)

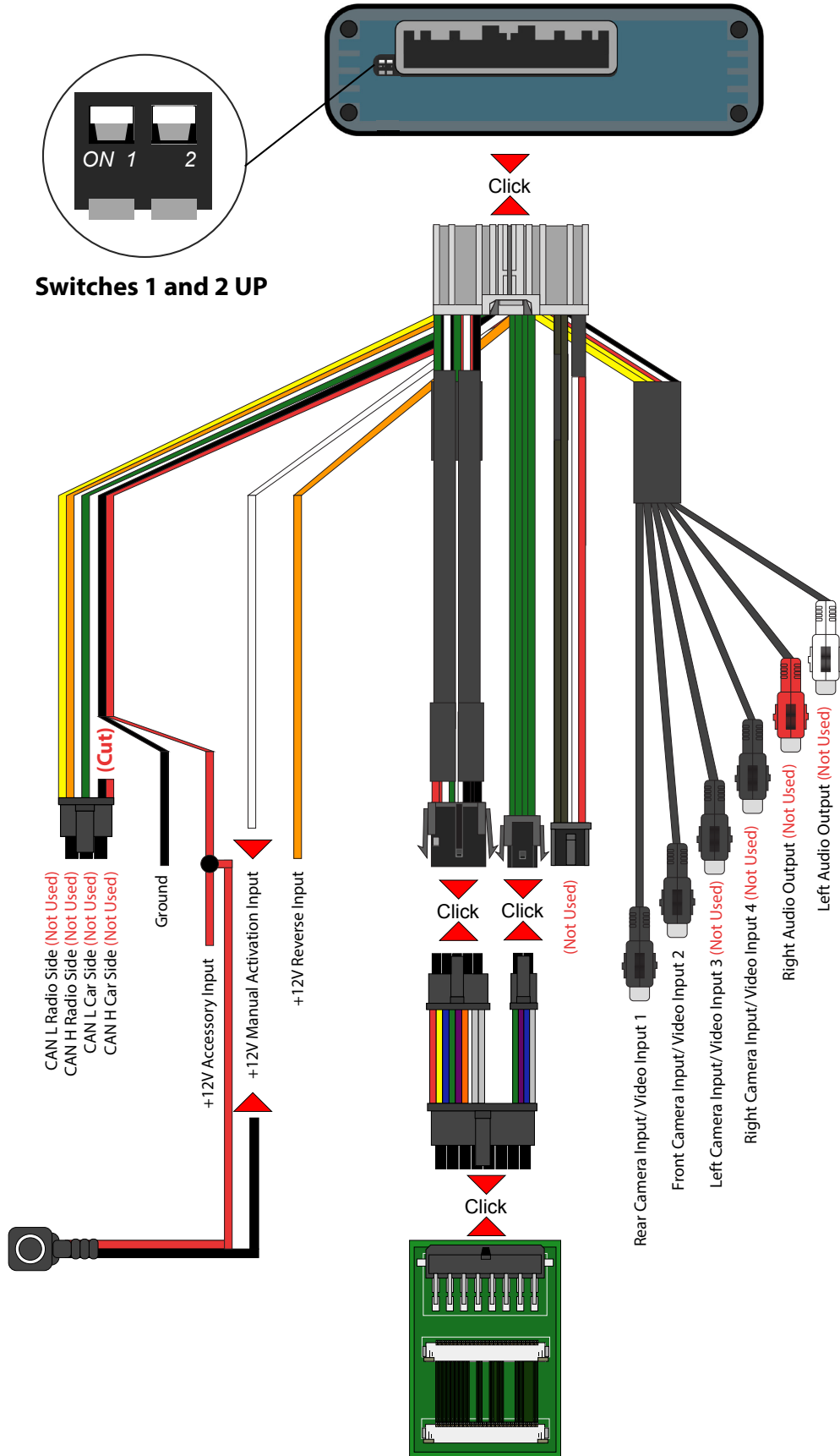
Step 15: Connect one wire of the push button to +12 Volt ACC power in the vehicle and the other wire to the white manual activation wire on the interface harness. (Not required for installations with reverse camera only)

Step 16: Connect your aftermarket cameras/video inputs to Rear Camera Input/Video Input 1 and Front Camera Input/Video Input 2 on the interface harness.

Step 17: Make sure both dip switches on the interface are facing UP in the OFF Position. Plug the interface harness into the interface.

See Next Page for Quick Connection Diagram >

Quick Connection Diagram



Testing and Operation

Step 1: Turn on the ignition. A green LED will light up on the interface to confirm it has power.

Step 2: Press the push button once to turn on and display Video 1. Skip this step if only using reverse camera. (If no video source is connected you will see a “no signal” message)

Step 3: To return to the factory information screen press and hold the push button for 2 seconds

Step 4: To test the aftermarket reverse camera operation, press on the brake and set the vehicle in reverse. The reverse camera will display. if no camera is connected a “no camera connected” message will appear.

To Turn On parking lines, place vehicle in reverse and hold 12 volts to the white wire until the lines Turn On.
To Turn Off parking lines, place vehicle in reverse and hold 12 volts to the white wire until the lines Turn Off.

User Manual



You do not need to use the push button if only a reverse camera was installed

The reverse camera will automatically display when the vehicle is placed in Reverse. It will automatically Turn OFF when the vehicle is placed in any other gear and will display the factory screen.

To View Video 2 (Front Camera if Installed)

If no video source is connected you will see a “No Signal” message.

Step 1: Press the push button once to Turn ON the interface. This will display Video 1.

Step 2: Press the push button once to switch from Video 1 source to Video 2 source.

Step 3: Press and Hold the push button for 2 seconds to return to the factory screen.