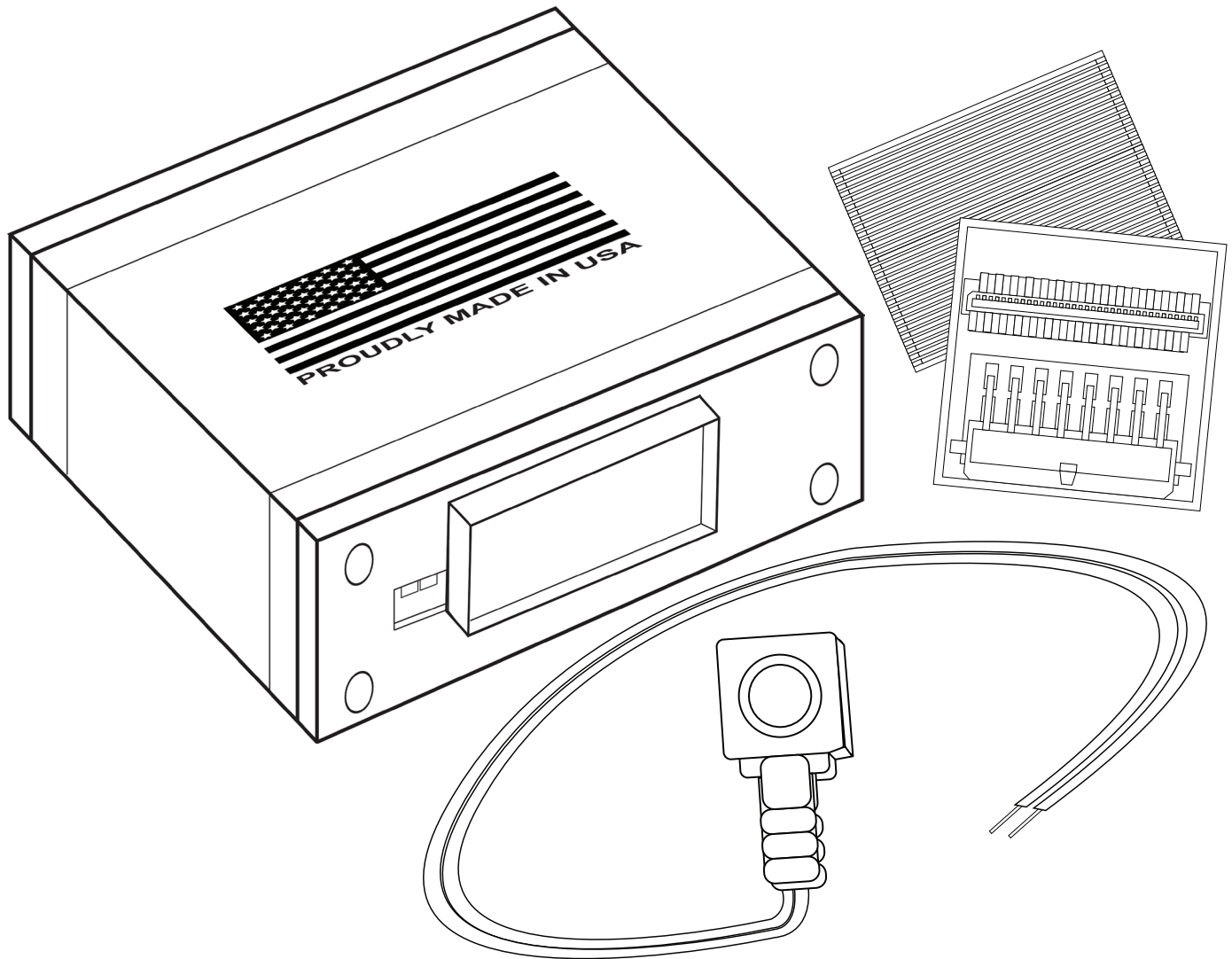


Installation Manual (NAVRGB6.0-VI+MBEIRC)

Maybach 62 2003-2012



Manual Version: 1.0

DESIGNED + MANUFACTURED IN THE



NOTICE: We recommend having this installation performed by a certified technician.
All product names, logos, brands, trademarks and registered trademarks are
property of their respective owners.

WELCOME

IMPORTANT WARNING

Failure to follow these instructions carefully or not installing the interface as described could cause damage to the vehicle or safety systems on the vehicle. Any interference with specific safety systems could cause harm to other people as well.

This manual provides detailed instructions for this specific interface and vehicle type. Follow them as described. If the installer is not sure or does not feel comfortable, consult a competent technician who has the knowledge, experience, and understanding of how to complete the installation. Failure to do so will void your warranty on your interface and maybe on the vehicle.

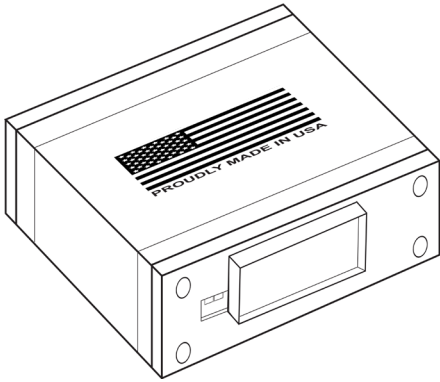
Precautions

PLEASE READ BEFORE YOU START THE INSTALLATION

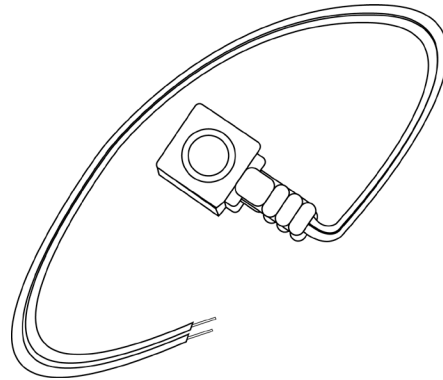
- Please study these instructions carefully before installing the interface.
- Protect the areas of the vehicle you will be working on before starting the disassembly.
- Use painters' tape or equivalent, and use protective blankets or covers on the front seats, interior panels, and center console.
- Do not disconnect the battery if the vehicle has an anti-theft coded radio unless you have the radio code.
- Write down radio code here if applicable _____.
- If installing an external push button switch, go over the location with the vehicle owner and make sure it is in an accessible place.
- To avoid accidental battery drainage, turn off the interior lights or remove the dome light fuse.
- Roll down a window to avoid being locked out of the car.
- Set Parking brake.
- Remove the negative battery cable if necessary.
- Always secure the interface with Velcro or double-sided tape to prevent rattling or damage.
- Make sure that the panels fit correctly.
- Use electrical tape on all your connections and splices, do not leave any exposed wires.
- Route all wires along with factory harnesses. Do not drill or make any unnecessary holes.
- Always use the help of a professional installer to prevent any damage to the vehicle or the interface.

What's In The Box?

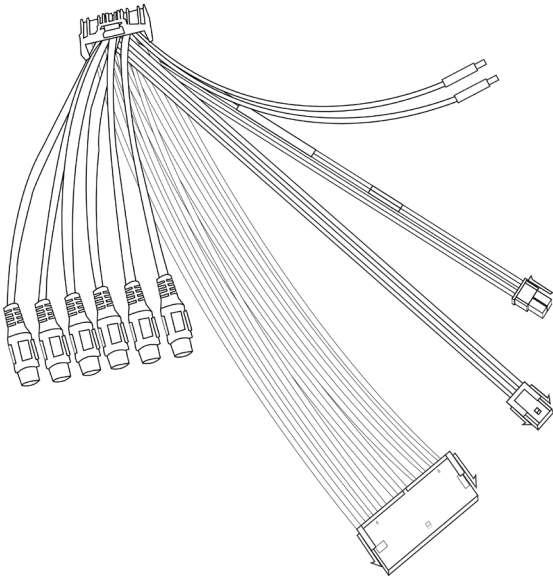
Interface
(Part # NAVRGB6.0-VI)



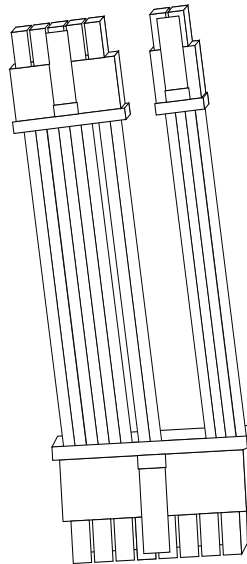
Push Button
(Part # NT-PUSH-BTN)



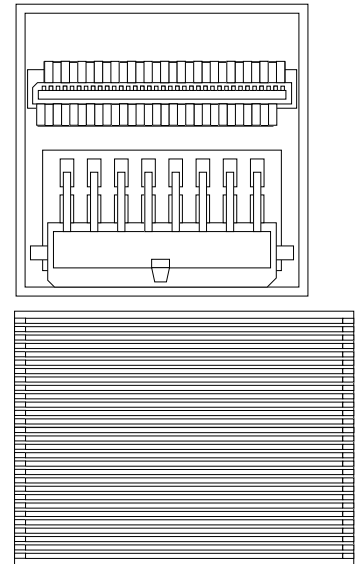
Interface Harness
(Part # NT-WHNT6)



Vehicle Specific
Plug and Play Harness
(Part # NT-PEREXODNIC)

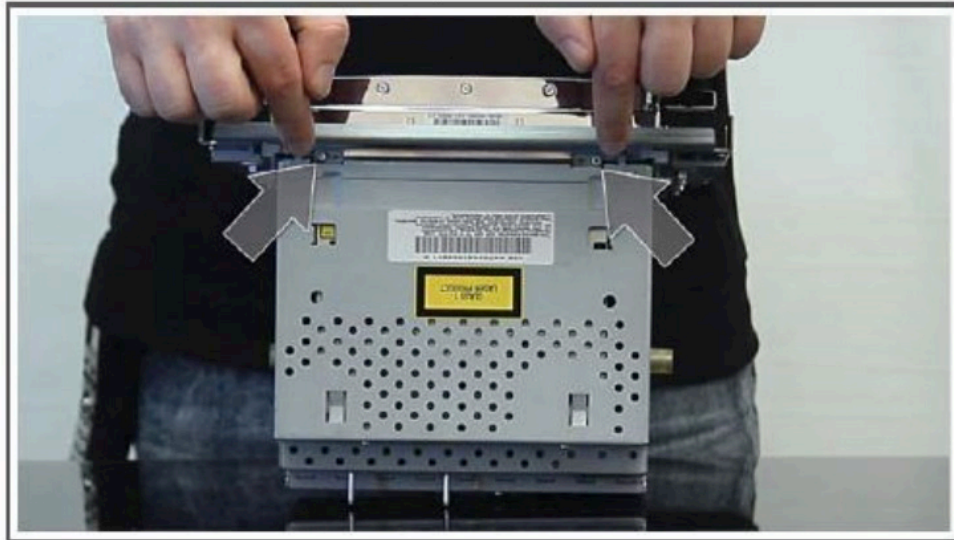


Vehicle Specific
Plug and Play Harness
(Part # NT-MBEIRC-BOARD-KIT)

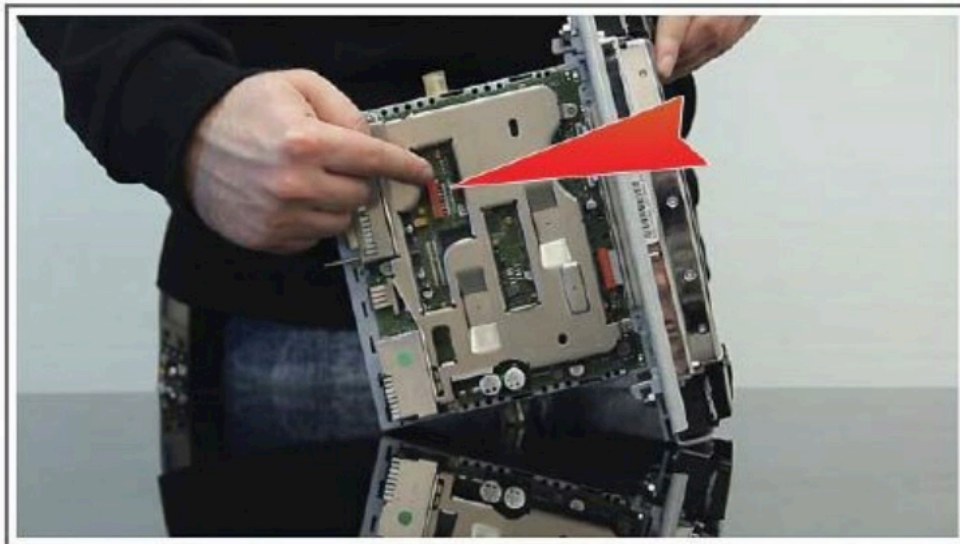


Installation Instructions

Step 1: Remove two large screws from the top of radio. When done, open the cover by pulling it up. Do not detach cover until the next step is completed.

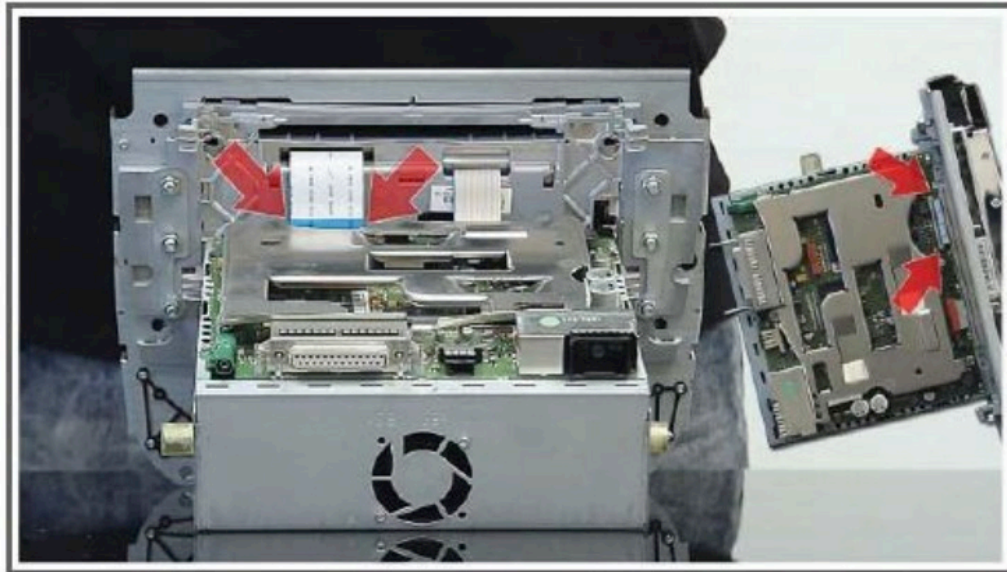


Step 2: Carefully disconnect the ribbon cable from the CD mechanism. Do not apply excessive force on both cable and connector. While disconnecting the cable, do not apply any force on the locks. They are very easy to break. Be careful, and do not use sharp objects to disconnect the cable.



Installation Instructions

Step 3: Disconnect the factory ribbon cable from the board. Use caution and care to prevent any possible damage of both cable and connector, especially the connector locking tabs.



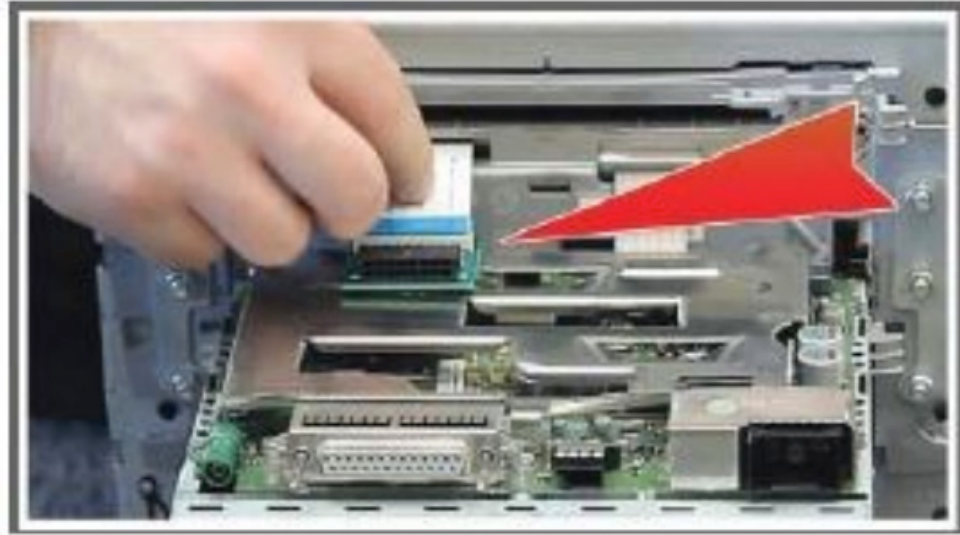
Step 4: Connect the supplied ribbon cable to the bottom connector of the supplied MBEIRC board. Insert the other end of the supplied ribbon cable into the radio.



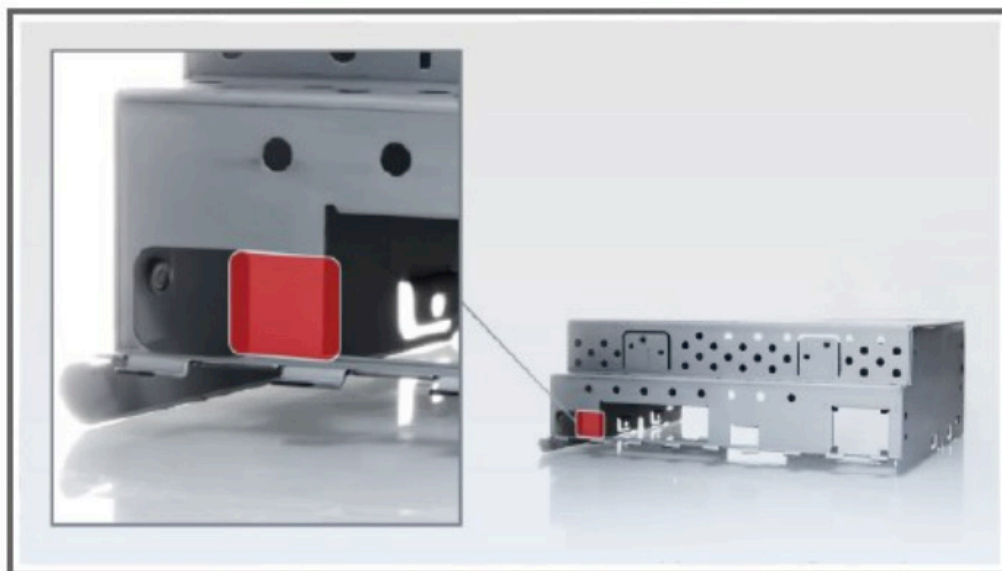
Installation Instructions

Step 5: Insert original flex ribbon cable into the top connector of the supplied MBEIRC board. Secure the board on the radio using the adhesive tape attached to the board.

Make sure to connect the plugs to the appropriate slot and to insert them in the right direction. When inserting ribbon cable into the board, blue stripe should be facing up.

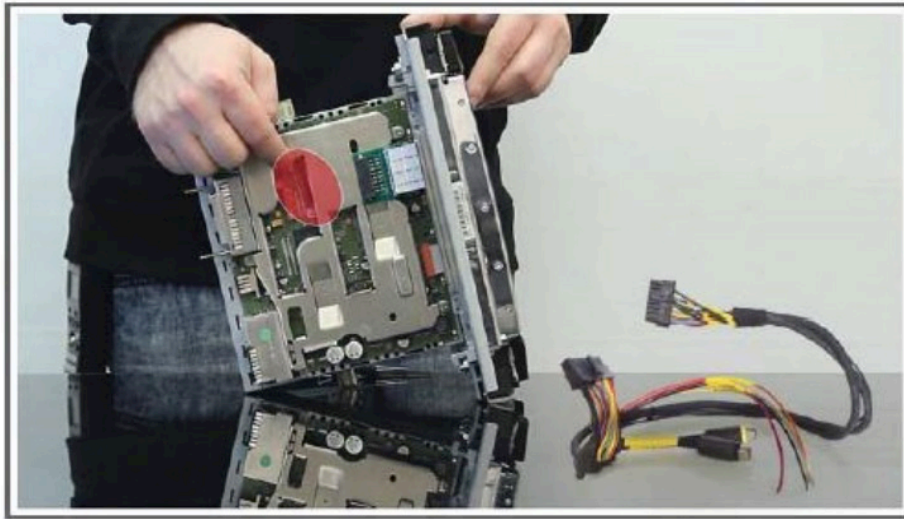


Step 6: In order to connect the supplied Vehicle Specific Plug and Play Harnesses, you will need to cut an opening in the cover of the radio (location shown in the picture below). It is recommended to remove the CD changer mechanism before using cutting tools.

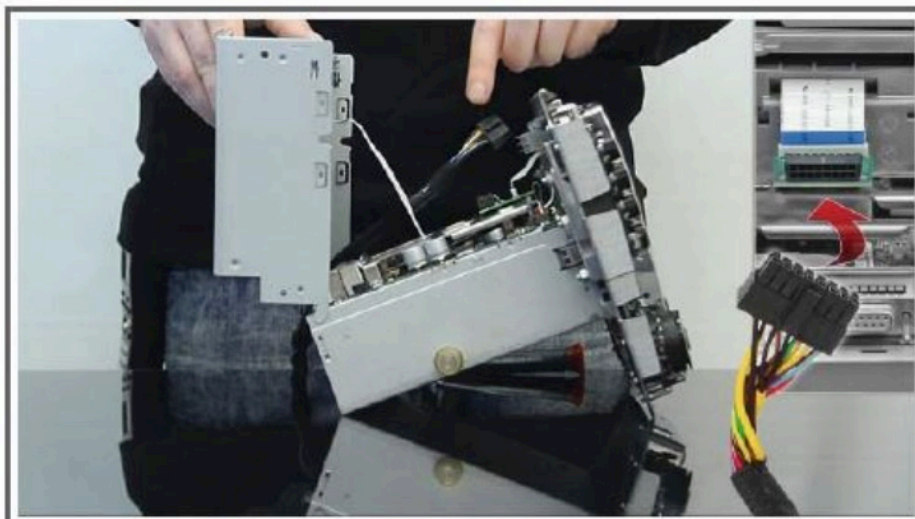


Installation Instructions

Step 7: Carefully route the cable inside the radio and avoid obstruction of CD changer connector. Keep the area marked in red accessible. This space will be required for installing the ribbon cable in the next step.



Step 8: Connect the Vehicle Specific Plug and Play Harness (Part # NT-PEREXODNIC) to the MBEIRC board shown in the picture below. Reconnect the ribbon cable from the CD changer to the radio and close the cover. Replace two screws from the top of the radio.



Installation Instructions

Step 9: Connect the 10 pin connector on Vehicle Specific Harness (Part # NT-PEREXODNIC) to the 10 pin connector on the supplied Interface harness (Part # NT-WHNT6).

Step 10: Connect the 4 pin connector on Vehicle Specific Harness (Part # NT-PEREXODNIC) to the 4 pin connector on the supplied interface harness (Part # NT-WHNT6).

Step 11: Cut off the Red (+12 Volts ACC) and Black (Ground) wires off of the 6-pin plug on the interface harness.

Step 12: Connect the Red wire (+12 Volts ACC) to the Vehicle's factory accessory wire. (Fuse Box)

Step 13: Connect the Black wire (Ground) to the Vehicle's factory ground. (Radio Ground)

Step 14: Connect the Orange wire (+12 Volt Reverse Input) to the Vehicle's factory reverse wire. (Rev. Light)

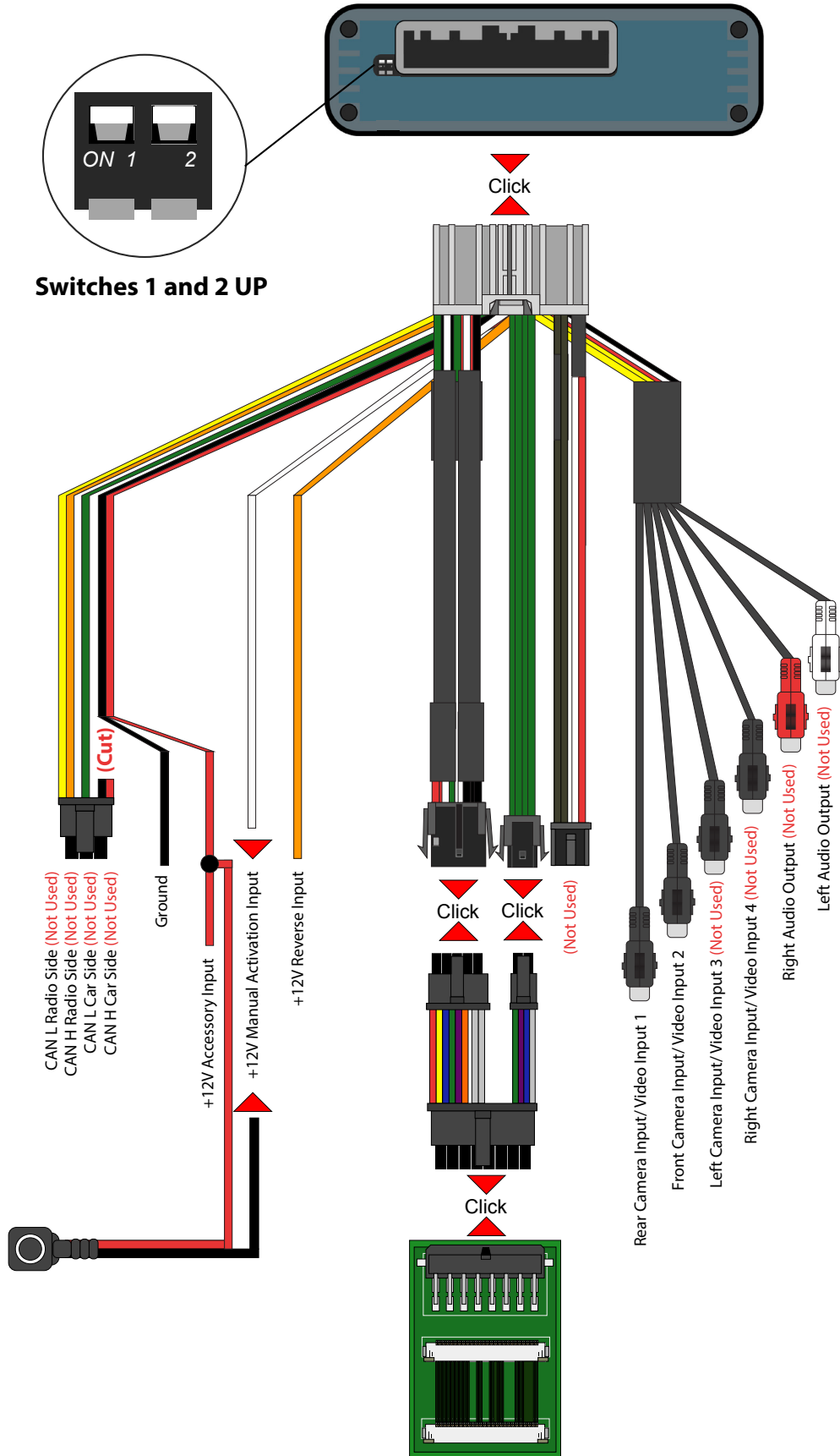
Step 15: Connect one wire of the push button to +12 Volt ACC power in the vehicle and the other wire to the white manual activation wire on the interface harness. (Not required for installations with reverse camera only)

Step 16: Connect your aftermarket cameras/video inputs to Rear Camera Input/Video Input 1 and Front Camera Input/Video Input 2 on the interface harness.

Step 17: Make sure both dip switches on the interface are facing UP in the OFF Position. Plug the interface harness into the interface.

See Next Page for Quick Connection Diagram >

Quick Connection Diagram



Testing and Operation

Step 1: Turn on the ignition. A green LED will light up on the interface to confirm it has power.

Step 2: Press the push button once to turn on and display Video 1. Skip this step if only using reverse camera. (If no video source is connected you will see a “no signal” message)

Step 3: To return to the factory information screen press and hold the push button for 2 seconds

Step 4: To test the aftermarket reverse camera operation, press on the brake and set the vehicle in reverse. The reverse camera will display. if no camera is connected a “no camera connected” message will appear.

To Turn On parking lines, place vehicle in reverse and hold 12 volts to the white wire until the lines Turn On.
To Turn Off parking lines, place vehicle in reverse and hold 12 volts to the white wire until the lines Turn Off.

User Manual



You do not need to use the push button if only a reverse camera was installed

The reverse camera will automatically display when the vehicle is placed in Reverse. It will automatically Turn OFF when the vehicle is placed in any other gear and will display the factory screen.

To View Video 2 (Front Camera if Installed)

If no video source is connected you will see a “No Signal” message.

Step 1: Press the push button once to Turn ON the interface. This will display Video 1.

Step 2: Press the push button once to switch from Video 1 source to Video 2 source.

Step 3: Press and Hold the push button for 2 seconds to return to the factory screen.