

the friendly user guide for

PLAY
^
the table



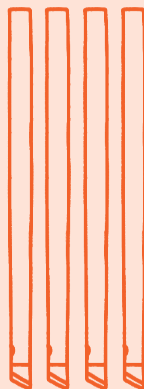
What's included

- A. Table
- B. Play table legs (x4)
- C. Cross bar
- D. Allen key
- E. Bolts (x8)

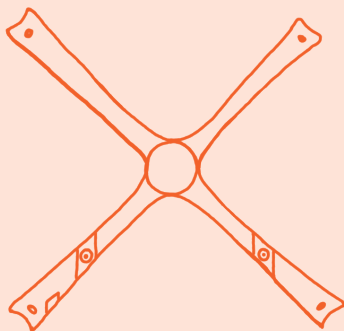
A



B



C



D

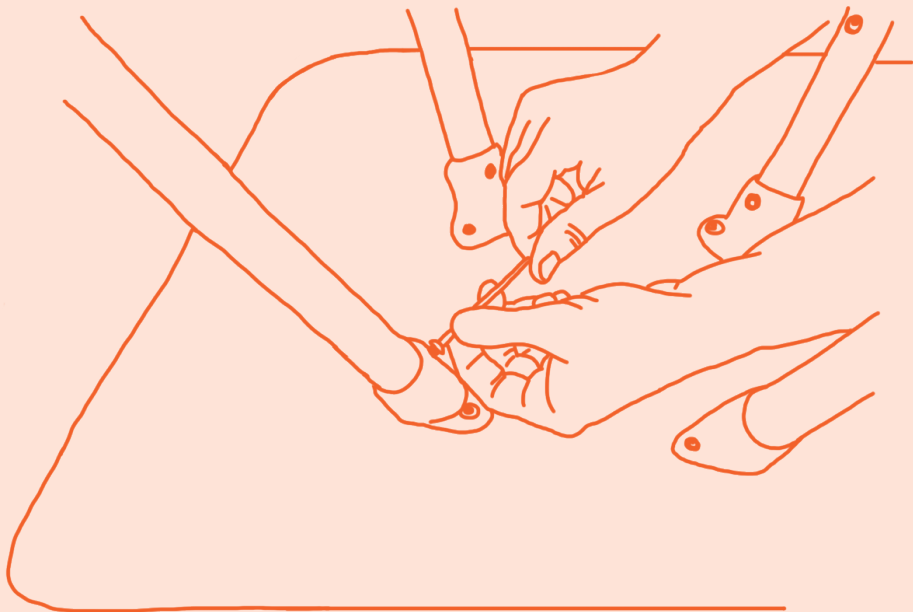


E



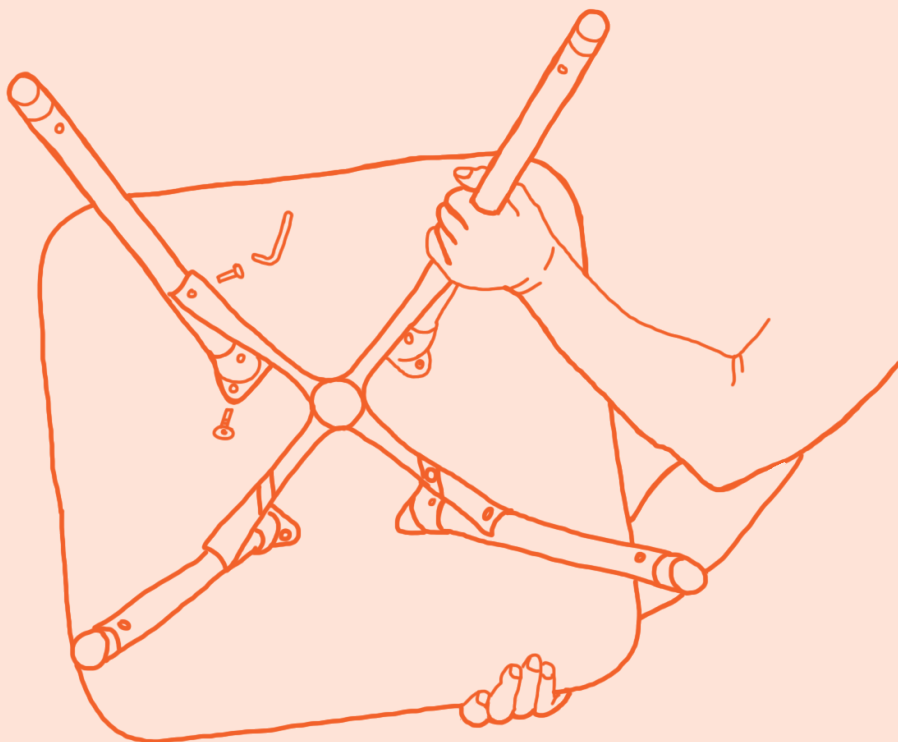
Step 1

Insert four legs and tighten bolts. Tighten each bolt a little at a time until they are secure.



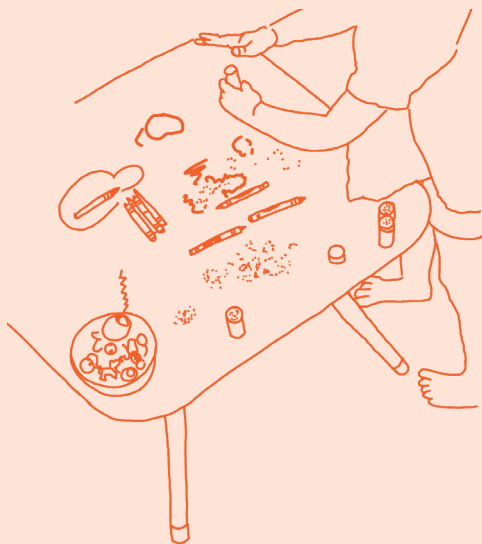
Step 2

Line up cross bar with the holes on the legs. Insert bolts and tighten each one a little at a time until they are secure.

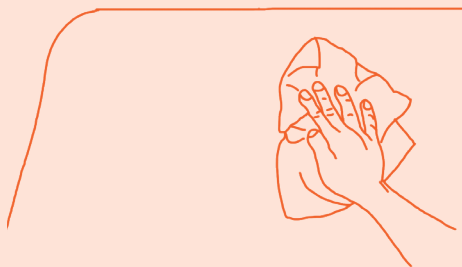


Pro tips

The Play Table is the best thing for playing, learning + creating. It's a play area, art studio and learning zone—all in one.

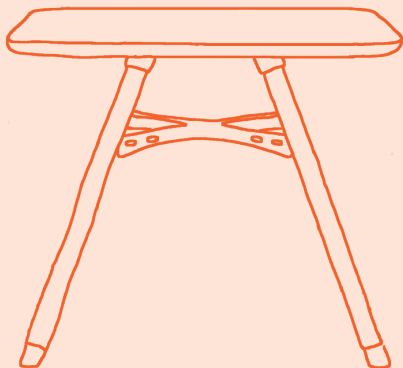


When the masterpiece gets messy, use a wet sponge and mild dish soap for easy clean up.



It's playtime

Once the legs and cross bar are securely fastened, The Play Table is good to go. Ready, set, play!





Need assistance? Watch the videos:
meetlalo.com/theplaytablesetup