

# BLOOD SMEAR

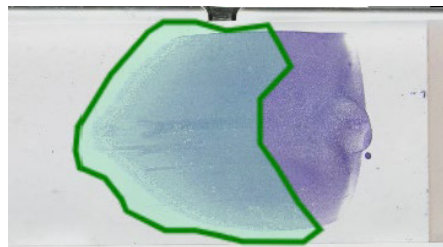


## Keys To Excellent Stain Quality

Brief blood smear preparation instructions below. More detailed instructions available in the Vetscan Imagyst® AI Blood Smear User Guide: <https://files.helpdocs.io/la8tfkiodj/other/1657821731340/vetscan-imagyst-blood-smear-user-guideglobal.pdf>

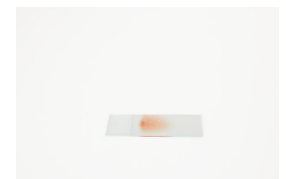
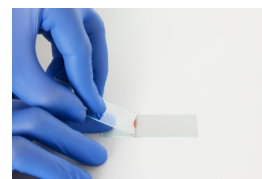
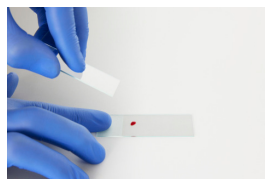
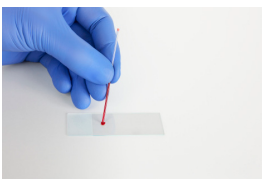
## Key Components for Submission

- Stained blood smear
- CBC data



The feathered edge, monolayer, and at least a portion of the body should be included in the scan area.

## Blood smear preparation



### Prepare The Slide

- Mix the EDTA anticoagulated blood
- Use a microhematocrit capillary tube or precision pipette to draw blood from the tube that has just been mixed, and gently place a drop onto the labeled slide
- Care should be taken not to tap the tube against the slide
- A wooden stick should not be used for this blood transfer - platelets and white blood cells tend to adhere to the stick

### Place Spreader Slide

- Place the spreader slide on top of the labeled slide in front of the blood droplet and hold at a 30° to 45° angle

### Spread The Blood

- Draw the spreader slide back until it makes contact with the blood droplet
- Capillary action will draw the sample toward the edges of the slide
- Do not allow the blood to reach the edges of the slide

### Complete The Spread

- Before the blood reaches the edges of the slide, with a smooth, stable and fluid motion, push the spreader slide away from the sample blood drop across the bottom slide. Maintain the same angle throughout the motion, and do not apply downward pressure. This should produce a uniform blood film covering approximately 1/2 to 2/3 of the slide
- Let the slide air-dry to avoid air-drying artifacts (DO NOT HEAT FIX THE SLIDE)

### Inspect Slide

- After the blood smear is made, visually inspect the slide to ensure that 1/2 to 2/3 of the slide is covered
- The smear should look like a thumbprint and exhibit a visible feathered edge at its end