

1. Software Requirements

To operate the scanner in combination with the MyPSA application of shoe commerce, the following programmes must be installed on the computer:

- **XPOD_3D_Full_Foot_Scan**
Driver software "XPOD_3D_Full_Foot_Scan VX.X.X" of the scanner manufacturer (in the version released by shoe commerce).
- **shoe-commerce_scan.exe**
Application of shoe commerce to control the scanner and the communication between the scanner and the MyPSA web server (in the version released by shoe commerce).
- Internet-Browser (Mozilla Firefox, Google Chrome or Microsoft Edge)

Optional:

- TeamViewer QuickSupport (for remote support by shoe commerce)
- Acrobat Reader

The latest and released versions of the XPOD software and the shoe-commerce_scan.exe (MyPSA Windows Installer) are available for download [HERE](#).

2. System Requirements

2.1 Hardware

- Laptop or desktop-PC with monitor, keyboard, mouse
- Operating system Windows 10 Professional or Windows 11 Professional
- Processor Intel i5-6200U or better
- At least 8 GB RAM
- 2 x USB 3.0 Typ A ports (SuperSpeed) or
1 x USB 3.1 Typ C port or USB 3.2 Typ C port with hub and 2 x USB 3.1 Typ A ports
- Monitor: resolution at least 1.920 x 1.080 (touchscreen recommended)

2.2 Internet Access

MyPSA is a cloud-based application that requires free internet access with a bandwidth of at least 15 mbits for uploads and downloads in order to run smoothly.

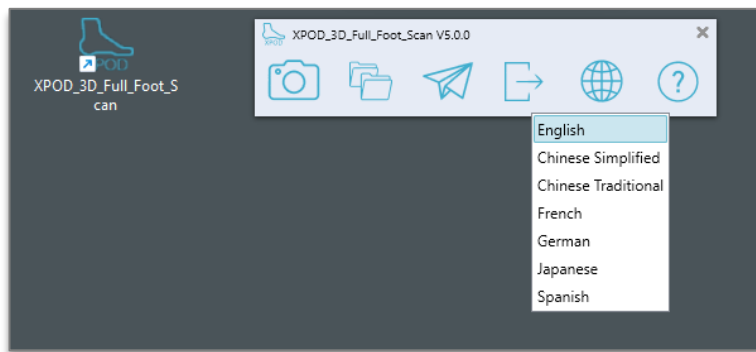
Furthermore, access to the following URL including the subdomains must be enabled:

***.shoe-commerce.com**

Please take this into account in the settings of your firewalls or other security measures.

3. Installation of „XPOD_3D_Full_Foot_Scan“ Software

1. After unpacking the ZIP file XPOD_vXXX.zip (XXX = version, e.g. 500), start the installation with the **"Setup.bat"** programme.
2. Restart the computer after the installation is complete.
3. There is now a shortcut **"XPOD_3D_Full_Foot_Scan"** on the desktop.
4. When you start the programme, a blue window opens at the top of the screen with various menu items, including the globe with language settings. The language **MUST be set to "English"**. Please do not make any changes to the programme settings. This may cause the MyPSA programme to malfunction.



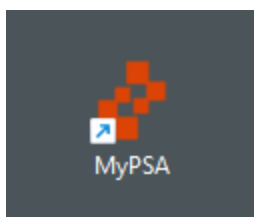
4. Installation of „shoe-commerce_scan.exe“

4.1 Automatic Installation

1. You need the file **"MyPSA_by_shoe-commerce.msi"** to install the **"shoe-commerce_scan.exe"**.
2. Start the installation with a double click.
3. Follow the instructions on the screen.

During the installation, the **"shoe-commerce"** folder is created in the root drive (C:). This contains the folder **"shoe-commerce_scandata"** for temporary storage of the scan data generated locally when scanning the feet and the application **"shoe-commerce_scan.exe"**.

Furthermore, the "MyPSA" shortcut is automatically created on the desktop, which can now be used to start the "MyPSA" web application.

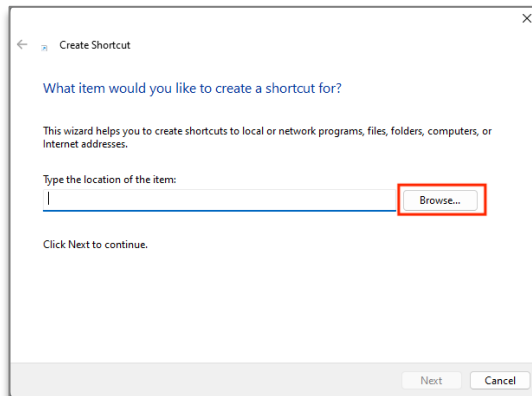


If the "MyPSA" shortcut on the desktop is **NOT** created automatically when the installation routine is executed, it must be created manually (see the following section).

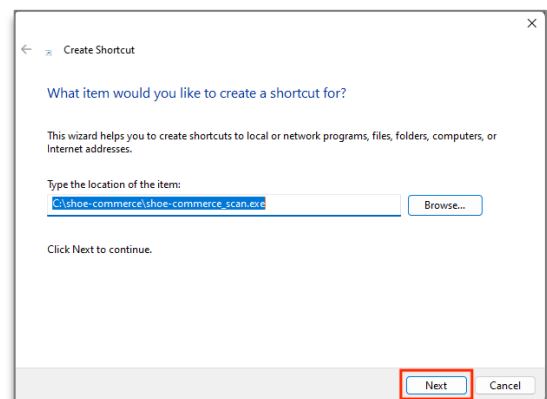
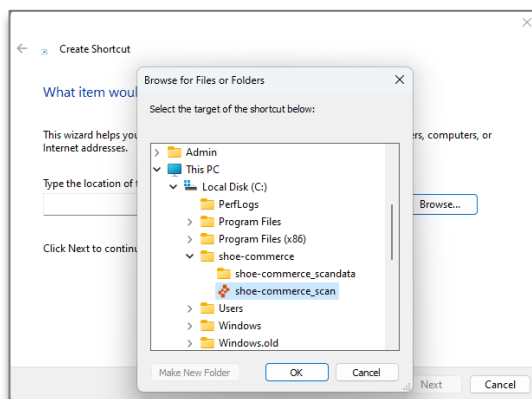
MyPSA Installation Instructions

4.2 Manual Creation of the Shortcut

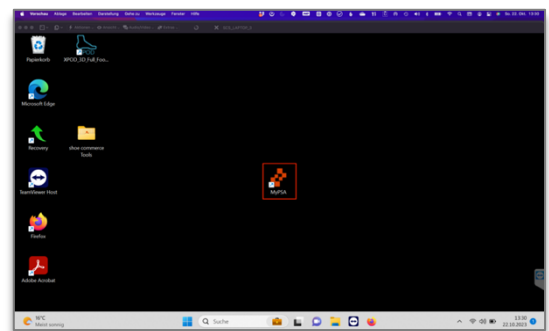
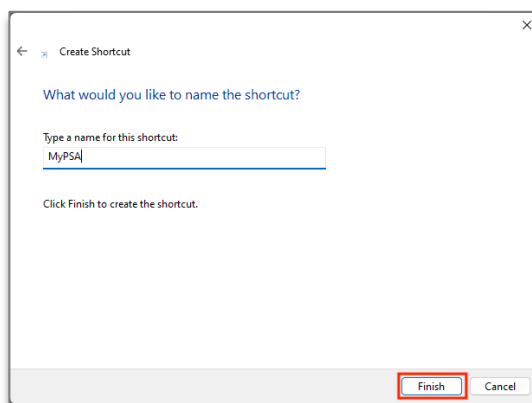
1. Right-click on the desktop. A pop-up will open.
2. Select the menu item **"New > Shortcut"**.
3. Select the storage location of the element to which you would like to create a link. To do this, press the **"Browse..."** button.



4. Navigate to the folder **"C:\shoe-commerce"** and select the file **"shoe-commerce_scan"**.
5. Click on **"Next"**.

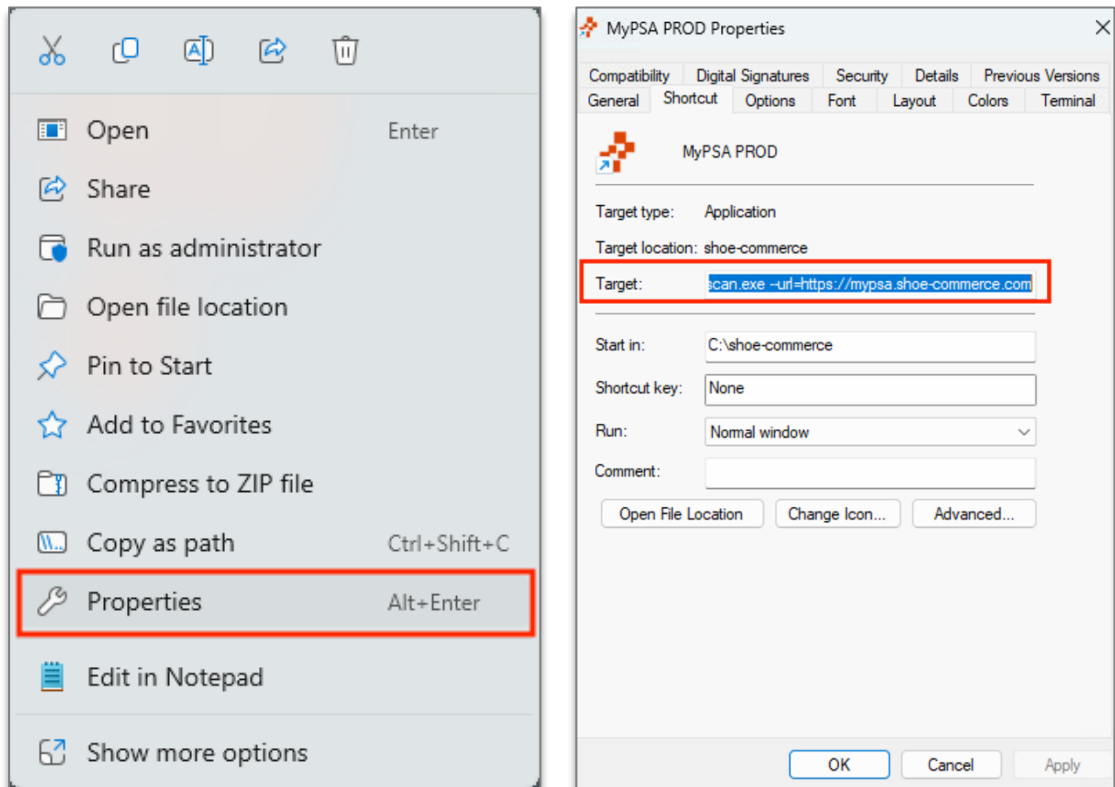


6. Change the suggested name **"shoe-commerce_scan"** to **"MyPSA"** and click on the **"Finish"** button.
7. The **"MyPSA"** shortcut is now on the desktop.



MyPSA Installation Instructions

8. Right-click on the "MyPSA" shortcut. A pop-up will open.
9. Select the "Properties" menu item.
10. In the "Target" field, change the entry to:
"C:\shoe-commerce\shoe-commerce_scan.exe --url=https://mypsa.shoe-commerce.com"
11. Then click on "OK"



12. The "MyPSA" shortcut is now set up to start the "MyPSA" web application.