



HELP.WATERFORD.ORG

6 articles

Export by HelpDocs

Introduction to Waterford Early Learning

Waterford Early Learning is a technology-based early reading, math, and science program with integrated assessments and accompanying online and offline teacher resources. Waterford's student-centered, personalized learning software adapts automatically to give each student a unique learning experience tailored to his or her own skill level and pace.

If you would like a PDF of the Waterford Early Learning Help Guide to print or download, [click here \(https://files.helpdocs.io/uufzl24u09/other/1571756420409/waterford-7-articles-1571756378.pdf\)](https://files.helpdocs.io/uufzl24u09/other/1571756420409/waterford-7-articles-1571756378.pdf).

Waterford Early Learning is grounded in essential educational concepts to ensure students master the following core skills:

Waterford Early Learning: Reading

Waterford Early Learning: Reading is a comprehensive, adaptive reading curriculum designed to help each student become a successful reader. The program incorporates five essential reading strands:

- Phonological awareness
- Phonics
- Fluency
- Comprehension & vocabulary
- Language concepts



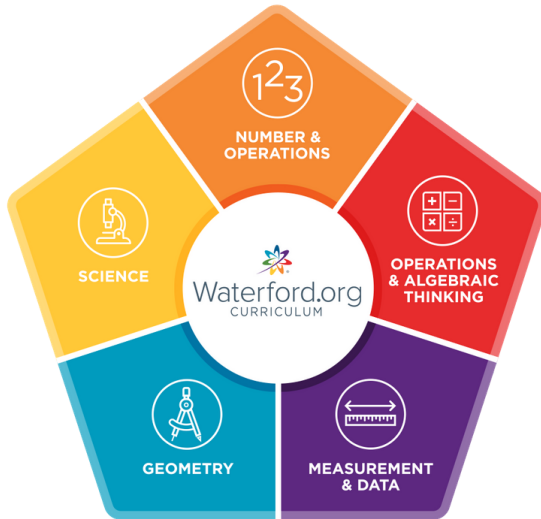
Waterford Early Learning: Math & Science

Waterford Early Learning: Math & Science provides comprehensive instruction for young learners in the major areas of beginning math:

- Number and operations
- Algebraic reasoning
- Geometry
- Measurement

- Data analysis

The integrated science curriculum emphasizes exploration and the scientific method while teaching earth, life, and physical science.



You can also use our [Mouse and More video \(https://www.youtube.com/watch?v=7j2gmTLJwlo\)](https://www.youtube.com/watch?v=7j2gmTLJwlo) to teach kids basic computer skills they'll need to use Waterford Early Learning.

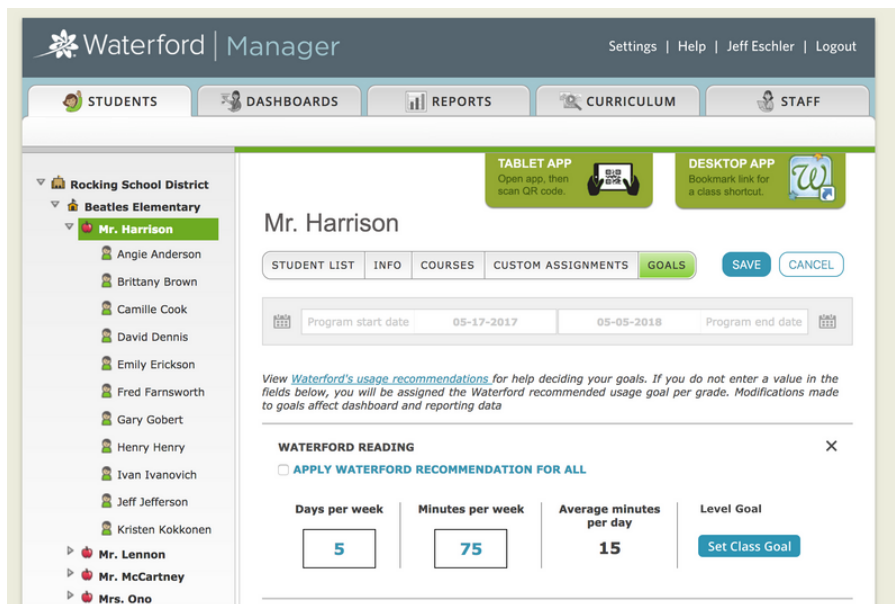
Here is a list of links with answers to common questions to get you started with Waterford Early Learning:

- [What are Waterford Reports? \(https://help.waterford.org/waterford-reports/introduction-to-waterford-reports\)](https://help.waterford.org/waterford-reports/introduction-to-waterford-reports)
- [What are Waterford Dashboards? \(https://help.waterford.org/dashboards/introduction-to-dashboards\)](https://help.waterford.org/dashboards/introduction-to-dashboards)
- [What is Waterford Mentor? \(https://help.waterford.org/englishmentor/introduction-to-waterford-mentor\)](https://help.waterford.org/englishmentor/introduction-to-waterford-mentor)
- [What is Classroom Advantage? \(https://help.waterford.org/classroom-advantage/what-is-classroom-presentation-mode\)](https://help.waterford.org/classroom-advantage/what-is-classroom-presentation-mode)
- [What is the Student Portal? \(https://help.waterford.org/student-portal\)](https://help.waterford.org/student-portal)



Waterford Manager for Waterford Early Learning

Waterford Manager is a desktop website for teachers and administrators to manage accounts, view progress and reports, and adjust student goals.



Waterford Manager for Teachers

This section provides an overview of the most teacher common tasks, but these and others are explained in greater detail in the [Waterford Manager for Teachers \(http://help.waterford.org/teacher-school-manager/\)](http://help.waterford.org/teacher-school-manager/) guide.

Teachers can perform the following tasks in Waterford Manager:

- Add student accounts
- Add and delete classes

Your administrator may limit your access to your class only. If this is the case, you will not be able to add or delete classes.

- Assign courses
- Add custom assignments
- Manage student sessions
- Search activities
- Create and edit playlists
- View data in reports and dashboards

Waterford Manager for Administrators

This section provides an overview of the most common administrator tasks, but these and others are explained in greater detail in the [Waterford Manager for Administrators](http://help.waterford.org/administrators-school-manager/) (<http://help.waterford.org/administrators-school-manager/>) guide.

School and district administrators can perform the following tasks in Waterford Manager:

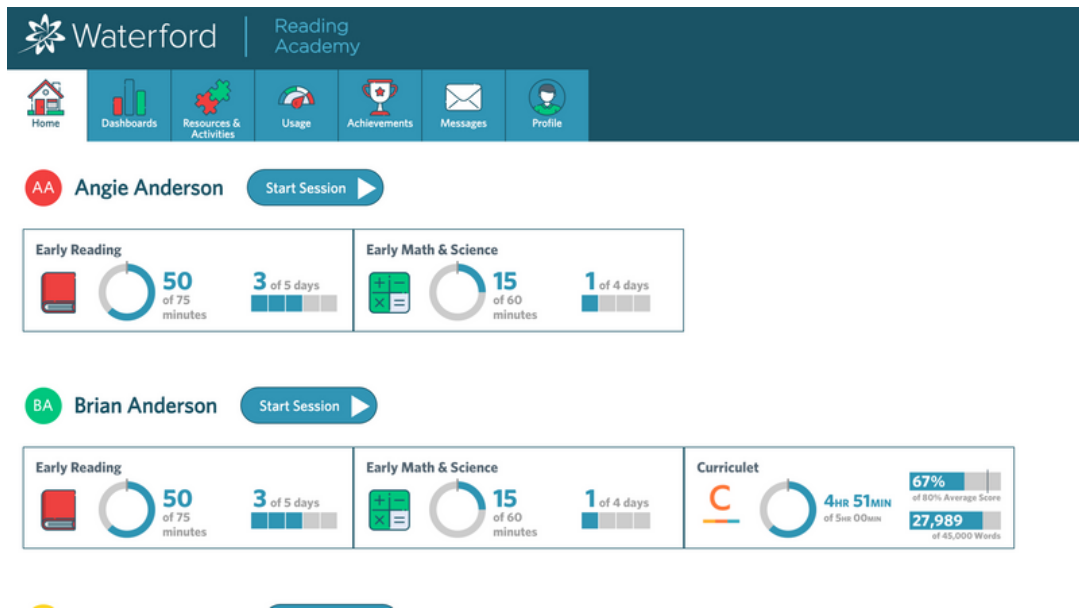
- First-time setup
- Import student, class, and staff accounts
- Sync Manager to your SIS with Clever
- Enable home access
- Manage student and teacher licenses
- Determine usage goals and set the school year and other school or district settings
- Perform all tasks available for teachers except creating and editing playlists

Waterford Mentor

This section provides an overview of the most common features of Waterford Mentor, but these and others are explained in greater detail in the [Waterford Mentor guide \(/article/fk48duqws-introduction-to-waterford-mentor/\)](/article/fk48duqws-introduction-to-waterford-mentor/).

Parents can view the following information in Waterford Mentor:

- Student progress and weekly usage
- Curriculum achievements
- Messages from teachers and Waterford.org



Classroom Presentation Mode

This section provides an overview of the most common tasks in Classroom Presentation Mode, but these and others are explained in greater detail in the [Classroom Presentation Mode \(http://help.waterford.org/classroom-advantage/\)](http://help.waterford.org/classroom-advantage/) guide.

Teachers can perform the following tasks in Classroom Presentation Mode:

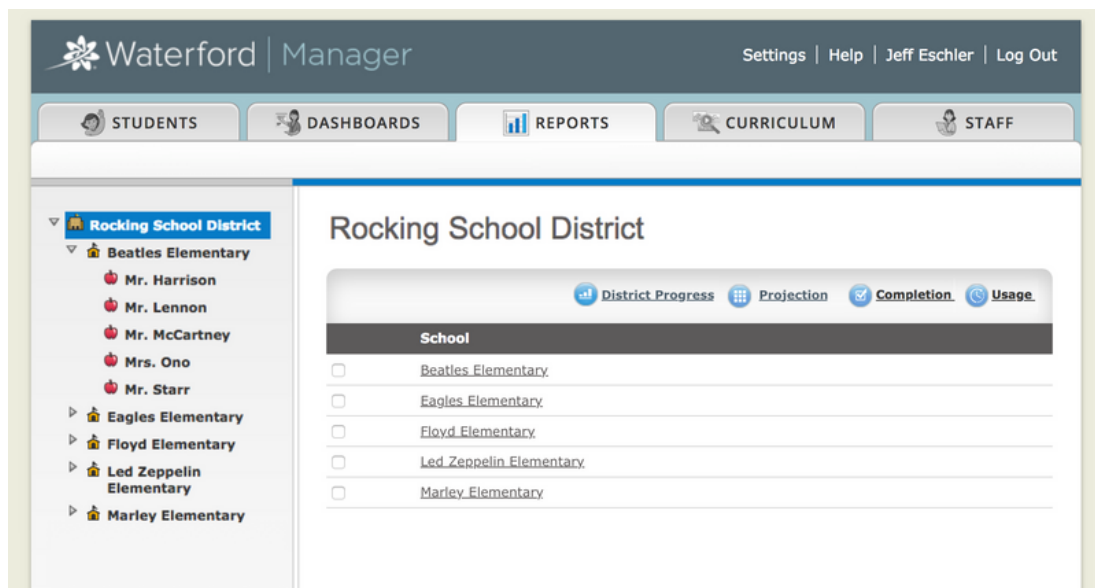
- Access 7,000+ classroom activities
- View newsletters, lesson plans, and other resources
- Build and edit playlists

Waterford Reports

This section provides an overview of the Waterford Reports available for teachers, but these are explained in greater detail in the [Reports guide \(/waterford-reports/introduction-to-waterford-reports/\)](/waterford-reports/introduction-to-waterford-reports/).

Teachers and administrators can view the following Waterford reports:

- Completion Report
- Usage Report
- Placement Report
- Area of Difficulty Report
- Weekly Scores Report
- Objective Details Report
- Progress Report



The screenshot displays the Waterford Manager web application interface. At the top, the logo and name 'Waterford | Manager' are visible, along with navigation links for 'Settings | Help | Jeff Eschler | Log Out'. Below this is a horizontal menu with tabs for 'STUDENTS', 'DASHBOARDS', 'REPORTS', 'CURRICULUM', and 'STAFF'. The 'REPORTS' tab is selected. On the left side, a sidebar shows a tree view of the 'Rocking School District' with sub-items for 'Beatles Elementary' (listing Mr. Harrison, Mr. Lennon, Mr. McCartney, Mrs. Ono, and Mr. Starr) and other schools like 'Eagles Elementary', 'Floyd Elementary', 'Led Zeppelin Elementary', and 'Marley Elementary'. The main content area is titled 'Rocking School District' and features a sub-menu with 'District Progress', 'Projection', 'Completion', and 'Usage'. The 'Completion' report is selected, showing a table with a 'School' header and a list of schools: Beatles Elementary, Eagles Elementary, Floyd Elementary, Led Zeppelin Elementary, and Marley Elementary, each with an unchecked checkbox.

Waterford Dashboards

This section provides an overview of the features available for teachers and administrators, but these are explained in greater detail in the [Dashboards guide \(/dashboards/introduction-to-dashboards\)](/dashboards/introduction-to-dashboards).

Teachers and administrators can perform the following tasks in the Dashboards:

- Set usage goals
- Select program start/end dates (administrators only)
- View district, school, class, or student dashboards
- Access certain Waterford reports