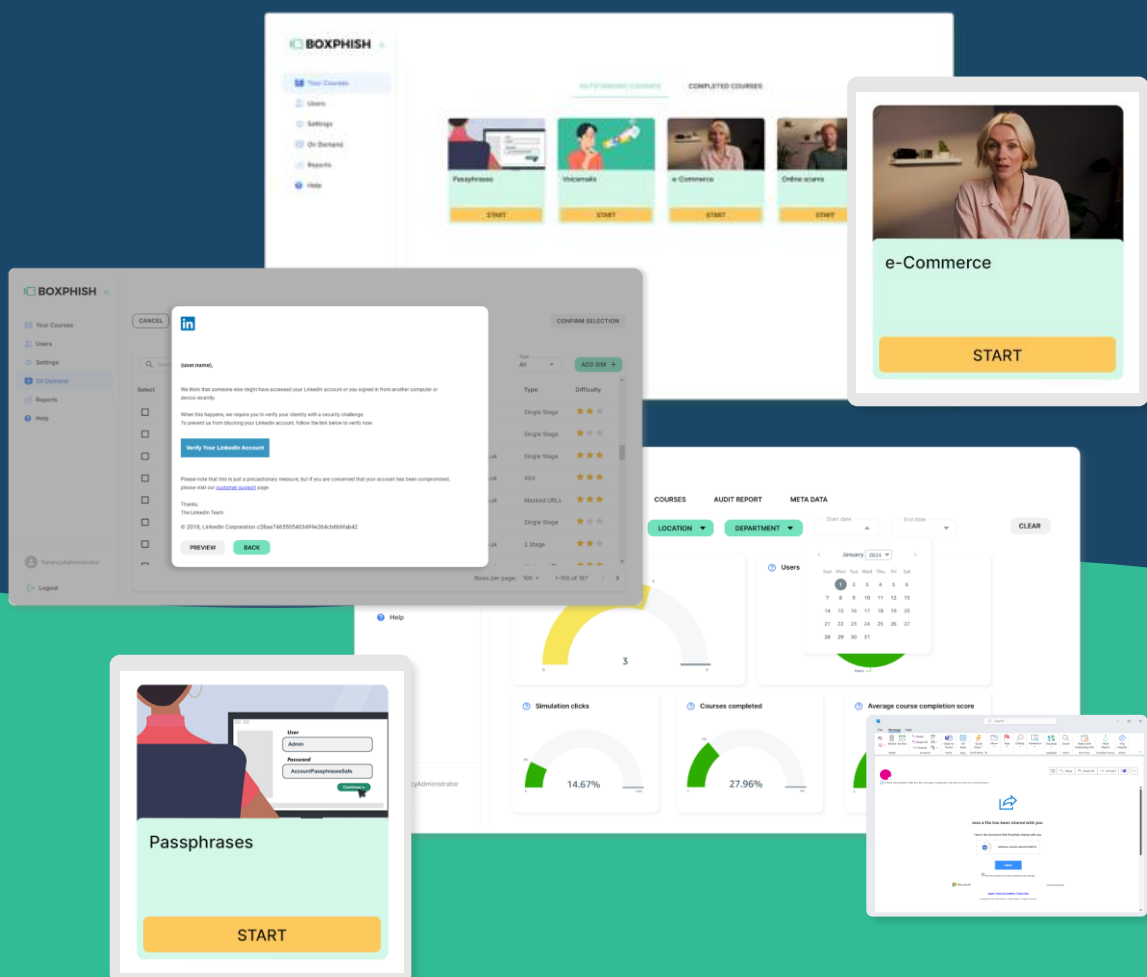




# Service overview

Elevate awareness, positively influence security behaviours, and transform your cyber culture with the security awareness training platform made for busy IT teams.



# Contents

3	<u>An introduction to Boxphish</u>
4	<u>The Boxphish platform</u>
6	<u>Phishing simulations</u>
11	<u>Training courses</u>
17	<u>Reporting suite</u>
19	<u>Custom content</u>
21	<u>Designed with you in mind</u>
22	<u>Get in touch</u>

# An introduction to Boxphish

Boxphish is a low-touch cyber security awareness training (SAT) platform that arms organisations—and their people—with the tools and knowledge needed to spot cyber-attacks.

This is achieved by combining real-world phishing simulations, quality training content and actionable analytics into a single platform.

The platform is simple to deploy, easy to manage and proven to boost organisation-wide cyber awareness, fast.

Since 2018, we've been helping organisations including Macmillan, Jaguar Land Rover, Police Scotland, Cambridge University and Greater Manchester Combined Authority strengthen their cyber defences by empowering their people to spot cyber-attacks.

Along the way, we have set the standard for what a people-first approach to cyber-SAT looks like, and how to measure it.



# The Boxphish platform

The Boxphish platform has three core areas; all of which are included in a single license cost. Customers get unrestricted access to all areas—including feature updates throughout the duration of contract—with no hidden costs.



## Phishing simulations

Our library of phishing simulations allow you to test your organisations susceptibility to attack and raise internal awareness amongst employees on the latest threats. Choose from a library of ready-made templates that mimic real-world attacks and track the results.



## Training courses (including custom content)

Follow simulations with focused, relatable training content that educates your employees on best-practice cyber security advice. A mixture of short video-based learning and quizzes ensure training is delivered in a way that is engaging and maximises information retention.



## Reporting suite

Use our analytics to pinpoint weak spots following a phishing simulation, track training course completion rates, and monitor your improving cyber awareness culture. Out-of-the-box dashboards are perfect for evidencing your cyber-SAT efforts.

# Additional product features

Alongside the platform's core functionality, Boxphish also offers several features designed to not only further inform and educate employees, but to deliver an exceptional experience; for both end-users and administrators



## **Policy management**

Maintain version control, increase policy engagement and evidence employee acceptance of key policies.



## **Phish report button**

Allow users to report suspected phishing emails and cyber-attacks with ease directly from their inbox.



## **Seamless user syncing**

Boxphish integrates with both Google and Microsoft Office 365 for seamless user syncing and management.



## **On-demand**

For those wanting to be a little more hands on, on-demand allows you to set up and send simulations and training on an ad hoc basis.



## **Automated learning journeys**

Automated learning journeys mean you can set and forget, with the confidence your employees are getting the training they need.



# Phishing simulations

**Stay one step ahead of cyber-attacks with our extensive library of real-world phishing simulations.**

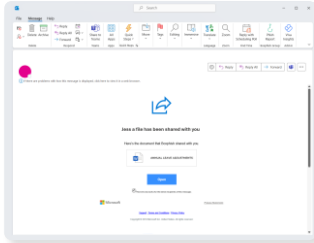
Send ready-made templates—or create your own—to employees in a matter of minutes and track the results within our reporting suite.

Should an employee accidentally click on a simulated phishing attack, we offer educational landing pages that contain top tips on how to spot the next one. For organisations looking to benchmark their susceptibility, we also offer the option of a 404-error page, so employees do not know they have been ‘phished’.

Through working closely with a leading email security partner who secure over two million endpoints globally, we gain real-time insight into phishing trends. This enables us to keep our library up to date and educating end users on the latest and most relevant threats.

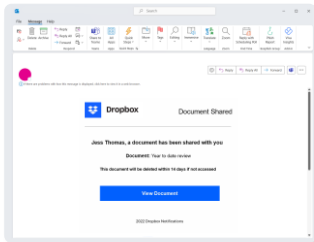


## Our top 20 phishing simulations



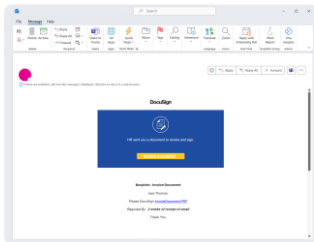
SharePoint file share

Difficulty rating: ★★☆☆



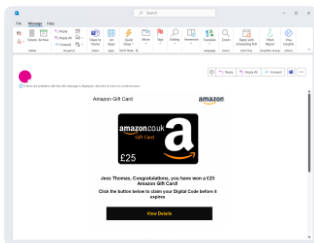
Dropbox document share

Difficulty rating: ★★★☆☆



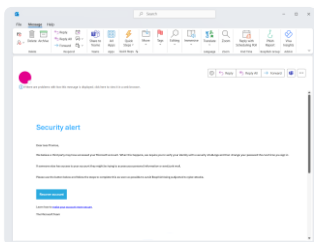
DocuSign invoice

Difficulty rating: ★★☆☆



Amazon gift card

Difficulty rating: ★★☆☆

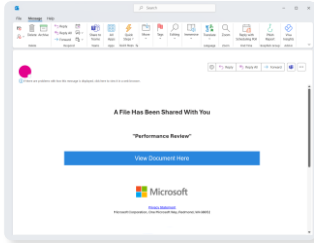


Microsoft password reset

Difficulty rating: ★★☆☆

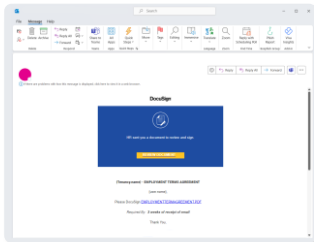


## Our top 20 phishing simulations



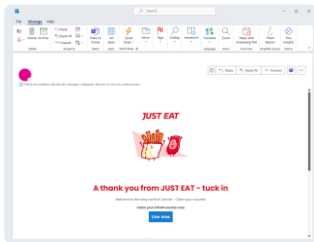
O365 file share

Difficulty rating: ★★☆☆



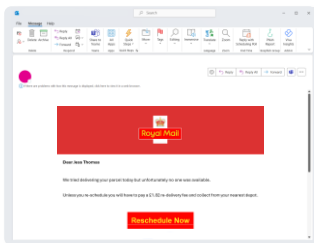
DocuSign employment terms

Difficulty rating: ★★☆☆



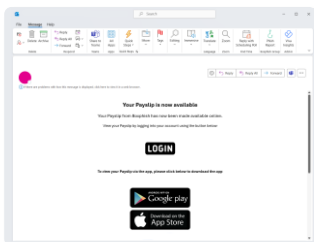
Just Eat

Difficulty rating: ★☆☆☆



Royal Mail delivery reschedule

Difficulty rating: ★★☆☆



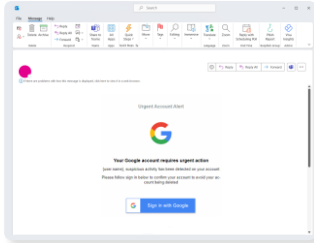
Payslip notification

Difficulty rating: ★★☆☆



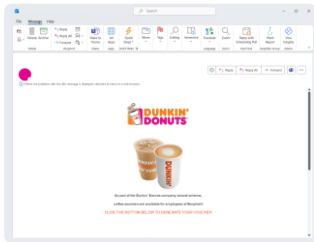


## Our top 20 phishing simulations



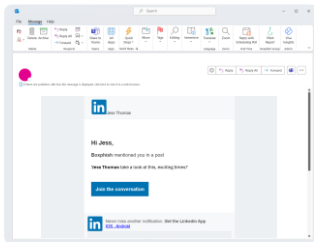
Google account deletion

Difficulty rating: ★★ ★★



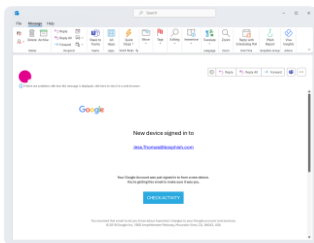
Dunkin' Donuts

Difficulty rating: ★ ★★



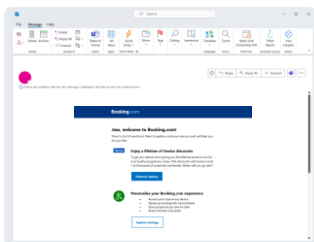
LinkedIn post tag

Difficulty rating: ★★ ★★



Gmail new sign in alert

Difficulty rating: ★★ ★★

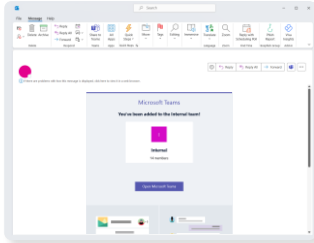


Booking.com

Difficulty rating: ★★ ★★

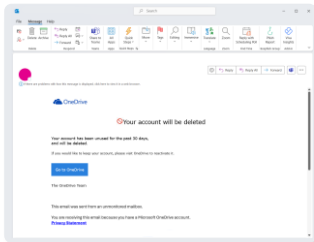


## Our top 20 phishing simulations



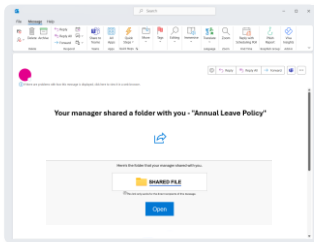
MS Teams notification

Difficulty rating: ★★☆☆



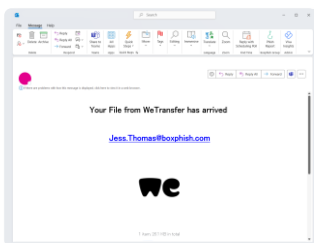
OneDrive account deletion

Difficulty rating: ★★☆☆



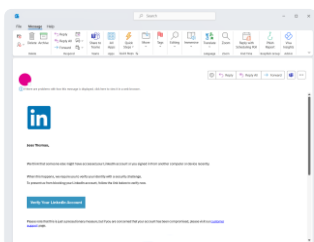
M365 manager file share

Difficulty rating: ★★★☆☆



WeTransfer

Difficulty rating: ★★☆☆



LinkedIn account verification

Difficulty rating: ★★☆☆



# Training courses

**Keep best-practice cyber advice front of mind with regular, bite-sized training modules.**

Enroll your employees onto automated learning journeys that deliver regular video-based training that is simple to understand and easy to digest. A short quiz follows every 2 to 4-minute training video prompting employees to put into practice what they have learnt; proven to maximise information retention.

Training can be accessed and completed anywhere, on any device, and takes a matter of minutes.

Our training content follows best-practice cyber advice released by the National Cyber Security Centre and is updated regularly to cover the latest information. Our training modules cover the full breadth of cyber awareness topics including, but not limited to, 'how to spot phishing', 'malware' and 'staying safe online', through to 'social engineering', 'GDPR' and 'data privacy'.

In addition to our online training modules, Boxphish has a library of educational resources including posters and infographics available to all customers that can be used to raise further awareness.

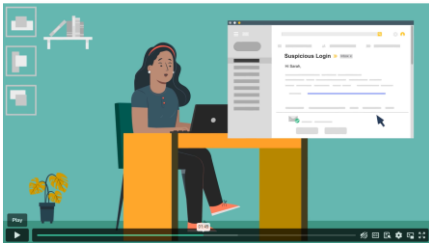


## Our top 20 animated training courses



### Cyber security fundamentals

An introduction to the world of cyber security and how you can identify and protect against common attacks.



### Account takeover

What is account takeover, what to look out for and how you can protect yourself from this type of attack.



### Mobile devices

An introduction to how cyber criminals use mobile devices to attack and how you can make your device more secure.



### Phishing 101

A detailed look at what causes phishing attacks and the steps you can take to avoid falling victim.



### QR code attacks

This course teaches you how cyber criminals are taking advantage of QR codes to launch their attacks.

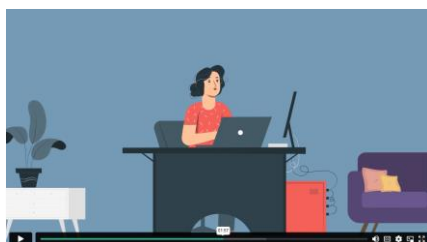


## Our top 20 animated training courses



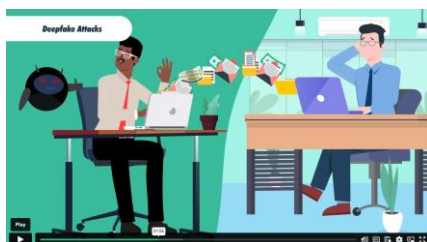
### Ransomware

How do you identify ransomware attacks, what are the different types, and what should you look out for?



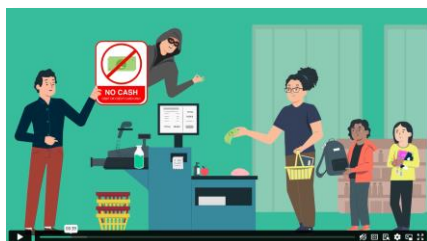
### Safe home working

Working from home can increase your exposure to threats, here's what you need to do to stay cyber safe at home.



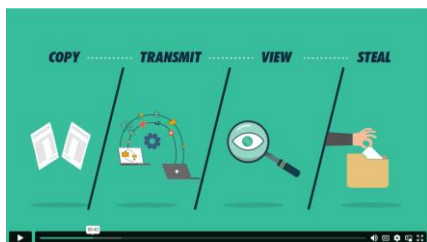
### Artificial intelligence

A course investigating the threats posed by AI and how we can protect ourselves from them.



### Credit card fraud

An overview of the types of attacks you can fall victim to through your credit card and how to protect against them.



### Data breaches

This course investigates the three main types of data breaches and explains how you can avoid falling victim.



## Our top 20 animated training courses



### Workplace security

Everything you need to know to protect yourself in the workplace, including tailgating, data privacy and more.



### Social media

An introduction into the types of attacks you can fall victim to through social media and how to avoid them.



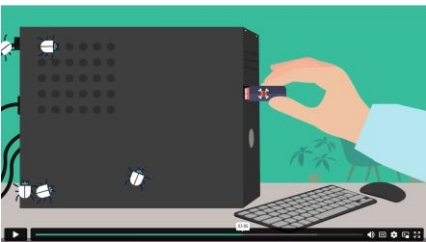
### Physical security

A course covering how to protect yourself through establishing a secure working environment.



### Online shopping

An introduction to safe online shopping including the top threats and how to protect yourself.



### Malware

An introduction to malicious software, how to avoid it, and what to do if your device becomes infected.



## Our top 20 animated training courses



### Physical devices

An introduction to how cyber criminals can use physical devices such as USBs and hard drives to attack you.



### Identity theft

An introduction to identity theft and how you can best protect your identity whilst online.



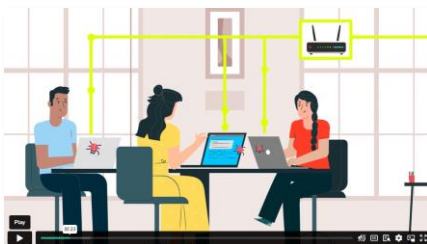
### Passphrases

How to secure your accounts with passphrases, not just passwords, to ensure maximum account security.



### Smishing and vishing

This course is designed to educate you on the ever-evolving types of phishing and how to protect yourself.



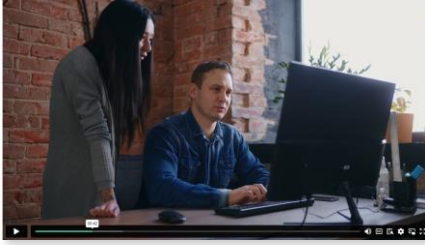
### Online self-defense

Spot fake websites, update your systems and further protect yourself online with multi-factor authentication.





## Our top 5 live-action training courses



### Essential guide to phishing & email scams

A detailed look at common causes of scams and phishing, along with steps you can take to protect yourself online.



### An introduction to deepfakes

This course is an introduction to deepfakes, what they are, and how you can stay vigilant online to spot their usage.



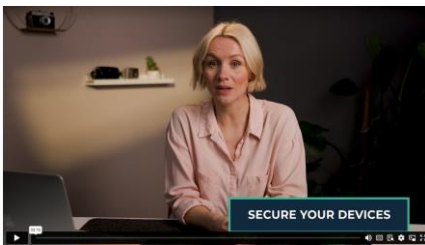
### Remote working

This course is an introduction to best practices when remote working, and what you can do to ensure security risks are minimised.



### Understanding impersonation

This course offers further insight on how cybercriminals can impersonate users or known brands and some key tips on how to verify them.



### Managing passwords

This course explains the difference between passwords and passphrases and how to manage them safely and responsibly.





# Reporting suite

**Monitor and evidence your improving cyber security culture via our market-leading reporting suite.**

Pinpoint weak spots within your organisation following a simulated phishing attack, monitor course completion rates and keep a close eye on your improving cyber security culture, all from a single location.

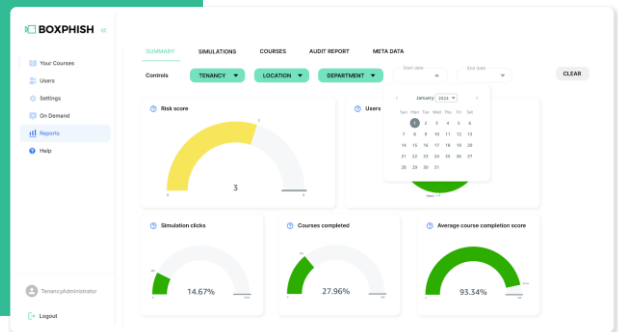
We offer a wide range of reports and pre-built dashboards that allow you to track all aspects of your cyber security training. Whether that's drilling into your most at-risk departments—so that you can target your training content to areas where it will have the biggest impact—or evidencing your cyber efforts for board-level reporting and compliance.



## Our top dashboards.

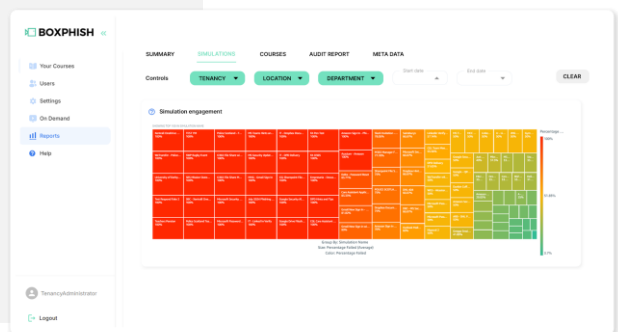
### Summary dashboard

Get a complete overview of your account cyber health. Track your organisations risk score and monitor all cyber awareness activity.



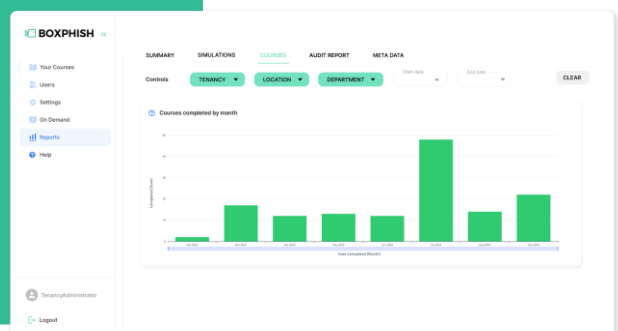
### Simulations dashboard

Keep a close eye on your phishing simulation performance. Monitor the number of sims sent, track your most clicked sims and spot at-risk end users.



### Training course dashboard

Monitor course completion rates from a single location. Track the number of courses sent and see how your employees are scoring.





# Custom content

**In addition to the core Boxphish platform, we offer several custom content services to support customers.**

We understand that some organisations have specific requirements when it comes to training content. Whether that's a need to use specific terminology or refer to inhouse policies.

Should this be the case, Boxphish offer several custom content packages that allow you to tailor everything from phishing simulation templates and landing pages, through to video-based training content and quiz questions.

In addition, customers can personalise the Boxphish platform by applying your company's logo and colours. This customisation ensures that the training environment aligns with your corporate branding. By incorporating your logo and colour scheme, the platform not only reflects your organisation's identity but also provides a cohesive and professional user experience that reinforces your brand's presence.

# Tailored content to suit your organisation

For organisations looking for a more tailored training solution, we offer several custom content packages. Please be aware that custom content is not included as part of the Boxphish platform and incurs additional costs. For more information, please speak to your sales representative.



## Custom simulations

The Boxphish platform includes functionality for customers to create and upload their own phishing simulations, however, if you require design support, or simply do not have the time, then the Boxphish team can be there to support.



## Custom landing pages

Send your employees to a custom landing page if they click on a phishing simulation. We can create customised landing pages based on your preferred requirements. Include your branding, point to a specific internal resource, or reinforce key learnings.



## Custom training content

Completely customise video-based training content. Include specific terminology, characters, languages or policies unique to your organisation. Boxphish can work with you to create content that perfectly suits your organisations training requirements.

# Designed with you in mind



Simple, quick and scalable deployment



A low-touch platform with built-in automation



A quality product coupled with industry leading service

Everything is accessed from a single platform that has been designed with simplicity and automation in mind. Deployment is quick and scalable, from a single organisation with 50 employees through to global enterprises with tens of thousands.

The platform's low-touch nature means you can set and forget; focusing on the day job. You'll have complete confidence that your employees are getting the training they need to protect themselves, and your organisation, without reliance or strain on internal resources.

With Boxphish, you don't just get a quality product, you also benefit from an industry leading service. So, unlike alternative cyber-SAT platforms, when you choose our product, you also get our partnership. Our team will not only assist you with set-up and deployment, but day-to-day support queries and on-going success management.



# Get in touch.

Website: [www.boxphish.com](http://www.boxphish.com)  
Email: [hello@boxphish.com](mailto:hello@boxphish.com)  
Tel: 0800 861 1318



Follow us on [LinkedIn](#)



Read our reviews on [G2](#)