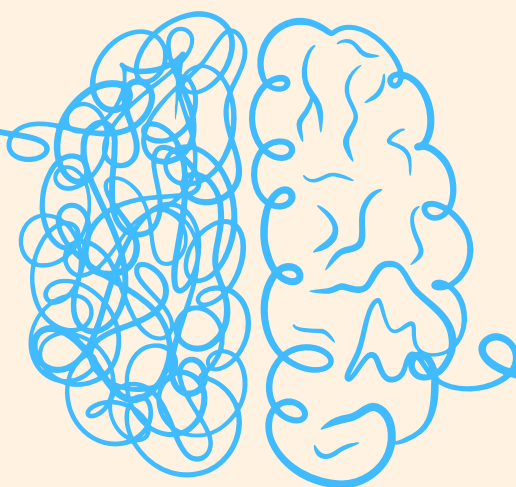


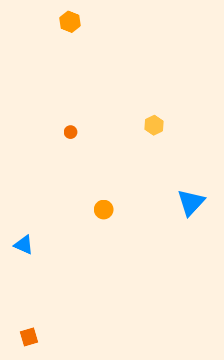
UNDERSTANDING THE SCIENCE BEHIND MEMORY AND RETENTION IN MATHEMATICS

Unlock the Potential of Your Students with Effective Learning Strategies

Memory and retention are fundamental to learning mathematics, as they allow students to build on existing knowledge without needing to relearn concepts each time they progress. Scientifically, memory consolidation is the process by which temporary, recently learned information becomes stable and long-term. This process is crucial in mathematics, where understanding and applying principles over time is essential.



Why Retention Matters in Mathematics



Cumulative Learning

Maths builds on itself. A strong memory foundation means students can understand more complex concepts without confusion.



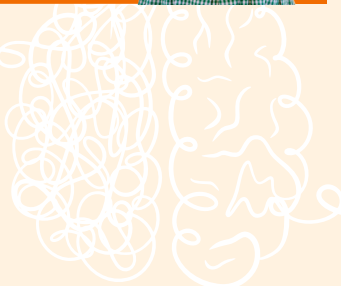
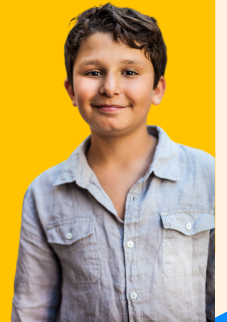
Problem Solving:

Effective memory recall enhances problem-solving capabilities by allowing students to apply known strategies to new problems.



Confidence:

Students with better retention are more confident in their abilities, encouraging further engagement and exploration in maths.



How Mangahigh Enhances Memory and Retention

Repetitive Practice with a Purpose

Mangahigh offers tailored practice sessions that help reinforce learning. By intelligently spacing these sessions, Mangahigh uses the spacing effect—a cognitive phenomenon where information is better recalled if learned over several sessions spaced out over time.

Interactive and Engaging Activities:

Games and interactive activities are not just more engaging but also aid in retention. Mangahigh's activities apply mathematical concepts in varied contexts, making it easier for students to remember and apply these concepts in real-world situations.

Immediate Feedback and Adjustments:

Mangahigh provides instant feedback, a critical factor in effective learning. Immediate correction of mistakes transforms abstract concepts into concrete knowledge, enhancing memory retention. Additionally, Mangahigh adjusts the difficulty level based on the student's performance, ensuring that the challenges are neither too easy to be boring nor too hard to be discouraging.

